

Ecuador 2021 – 2023

Vol. 3: *Bombycoidea*, *Gemetroida* and
other *Heterocera* excluding *Erebidae*

Andrey Zheludev¹ & Oliverio Velastegui



¹Prof. Dr., Department of Physics, Swiss Federal Institute of Technology Zurich (ETHZ), Otto-Ster-Weg 1, 8093 Zürich, Switzerland; zhelud@ethz.ch; <https://neutron.ethz.ch/>.



Contents

1	Introduction	3
2	Superfamily <i>Bombycoidea</i> Latreille, 1802	7
2.1	Family <i>Saturniidae</i> Boisduval, 1837	7
2.1.1	Subfamily <i>Arsenurinae</i> Jordan, 1922	7
2.1.2	Subfamily <i>Ceratocampinae</i> Harris, 1841	11
2.1.3	Subfamily <i>Hemileucinae</i> Grote & Robinson, 1866	16
2.1.4	Subfamily <i>Oxyteninae</i> Jordan, 1924	29
2.1.5	Subfamily <i>Saturniinae</i> Boisduval, 1837	30
2.2	Family <i>Apatelodidae</i> Neumoegen & Dyar, 1894	33
2.3	Family <i>Bombycidae</i> Latreille, 1802	36
2.3.1	Subfamily <i>Epiinae</i> Draudt & Schaus, 1929	36
2.4	Family <i>Phiditidae</i> Minet, 1994	40
2.5	Family <i>Sphingidae</i> Latreille, 1802	41
2.5.1	Subfamily <i>Smerinthinae</i> Grote & Robinson, 1865	41
2.5.2	Subfamily <i>Sphinginae</i> Latreille, [1802]	43
2.5.3	Subfamily <i>Macroglossinae</i> Harris, 1839	45
3	Superfamily <i>Noctuoidea</i> Latreille, 1809	51
3.1	Family <i>Noctuidae</i> Latreille, 1809	51
3.1.1	Subfamily <i>Condicinae</i> Poole, 1995	51
3.1.2	Subfamily <i>Hadeninae</i> Guenée, 1837	51
3.1.3	Subfamily <i>Agaristinae</i> Boisduval, 1833	52
3.1.4	Subfamily <i>Bagisarinae</i> Crumb, 1956	53
3.1.5	Subfamily <i>Pantheinae</i> Smith, 1898	53
3.1.6	Subfamily <i>Dyopsinae</i> Guenée, 1852	54
3.2	Family <i>Notodontidae</i> Stephens, 1829	55
3.2.1	Subfamily <i>Stauropinae</i> Matsumura, 1925	57
3.2.2	Subfamily <i>Hemiceratinae</i> Guenée, 1852	57
3.2.3	Subfamily <i>Heterocampinae</i> Neumoegen & Dyar, 1894	59
3.2.4	Subfamily <i>Nystaleinae</i> Forbes, 1948	62
3.2.5	Subfamily <i>Dioptinae</i> Walker, 1862	63
3.2.6	<i>Notodontidae species incertae</i>	65
3.3	Family <i>Euteliidae</i> Grote, 1882	66
3.3.1	Subfamily <i>Euteliinae</i> Grote, 1882	66
4	Superfamily <i>Geometroidea</i> Leach, 1815	67
4.1	Family <i>Sematuridae</i> Guenée, 1858	67
4.2	Family <i>Uraniidae</i> Leach, 1815	68
4.2.1	Subfamily <i>Uraniinae</i> Blanchard, 1845	68
4.2.2	Subfamily <i>Epipleminae</i> Hampson, 1892	68
4.3	Family <i>Geometridae</i> Leach, 1815	69
4.3.1	Subfamily <i>Geometrinae</i> Leach, 1815	69
4.3.2	Subfamily <i>Sterrhinae</i> Meyrick, 1892	76
4.3.3	Subfamily <i>Larentiinae</i> Duponchel, 1845	77
4.3.4	Subfamily <i>Ennominae</i> Duponchel, 1845	80
5	Superfamily <i>Sesioidea</i> Boisduval, 1828	97
5.1	Family <i>Castniidae</i> Boisduval, 1828	97
5.1.1	Subfamily <i>Castniinae</i> Houlbert, 1918	97
6	Superfamily <i>Lasiocampoidea</i> Harris, 1841	99
6.1	Family <i>Lasiocampidae</i> Harris, 1841	99

6.1.1	Subfamily <i>Macromphaliinae</i> Franclemont, 1973	99
6.1.2	Subfamily <i>Lasiocampinae</i> Harris 1841	101
7	Superfamily <i>Zygaenoidea</i> Latreille, 1809	103
7.1	Family <i>Megalopygidae</i> Herrich-Schäffer, 1855	103
7.1.1	Subfamily <i>Megalopyginae</i> Hopp, 1934	103
7.1.2	Subfamily <i>Trosiinae</i> Hopp, 1934	105
7.1.3	<i>Megalopygidae species incertae</i>	106
7.2	Family <i>Dalceridae</i> Dyar, 1898	107
7.3	Family <i>Limacodidae</i> Duponchel, 1845	108
7.3.1	Subfamily <i>Limacodinae</i> Duponchel, 1845	108
7.3.2	Subfamily <i>Chrysopolominae</i> Aurivillius, 1895	108
7.3.3	<i>Limacodidae species incertae</i>	108
8	Superfamily <i>Cossoidea</i> Leach, 1815	109
8.1	Family <i>Cossidae</i> Leach, 1815	109
8.1.1	Subfamily <i>Zeuzerinae</i> Boisduval, 1828	109
8.1.2	Subfamily <i>Hypoptinae</i> Neumoegen & Dyar, 1894	109
9	Superfamily <i>Pyraloidea</i> Latreille, 1809	111
9.1	Family <i>Pyalidae</i> Latreille, 1809	111
9.1.1	Subfamily <i>Epipaschiinae</i> Meyrick, 1884	111
9.1.2	Subfamily <i>Pyalinae</i> Latreille, 1809	111
9.1.3	Subfamily <i>Epipaschiinae</i> Meyrick, 1884	112
9.2	Family <i>Crambidae</i> Latreille, 1810	113
9.2.1	Subfamily <i>Crambinae</i> Latreille, 1810	113
9.2.2	Subfamily <i>Spilomelinae</i> Guenée, 1854	113
9.2.3	Subfamily <i>Midilinae</i> Munroe, 1958	119
9.2.4	<i>Crambidae species incertae</i>	119
10	Superfamily <i>Thyridoidea</i> Herrich-Schaeffer 1846	121
10.1	Family <i>Thyrididae</i> Herrich-Schäffer, 1846	121
10.1.1	Subfamily <i>Thyridinae</i> Herrich-Schäffer, 1846	121
10.1.2	Subfamily <i>Siculodinae</i> Meyrick, 1884	122
11	Superfamily <i>Mimallonoidea</i> Burmeister, 1878	123
11.1	Family <i>Mimallonidae</i> Burmeister, 1878	123
11.1.1	Subfamily <i>Lacosominae</i> Dyar, 1893	123
11.1.2	Subfamily <i>Druenticinae</i> St Laurent & Kawahara, 2018	124
11.1.3	Subfamily <i>Cicinninae</i> Schaus, 1912	124
12	Superfamily <i>Hepialoidea</i> Stephens, 1829	127
12.1	Family <i>Hepialidae</i> Stephens, 1828	127

Introduction

This is the 3rd volume in a field report on three 10-day collecting trips in Ecuador, 2021-2023. The expeditions were organized and guided by Mr. Oliverio Velastegui. This volume covers all “moths” excluding *Erebidae*, which already were the subject of Vol. 2. All specimens except a few day-flying *Notodontidae* and *Geometridae* were taken using standard white-sheet-and-mercury-vapour-light traps. These were installed in the following areas (see map below):

- near the village of Chuchuvi on the border of Esmeraldas and Imbabura provinces (Rio Mira), at about 1000m elevation on the Western slopes of the Andes close to the Colombian border;
- near the townships of Tena and Puerto Misahuali, Napo province, at the confluence of Rio Napo and Rio Misahuali, around 600-700 m elevation in the Napo/Amazon basin;
- in the lower Rio Pastazza valley, in Oliverio’s home town of Mera, at 1100m elevation;
- in the South-East, close to the Peruvian border on Rio Nangaritza and Rio Nambija, tributaries of Rio Zamora, in Zamora-Chinchipe province, at several locations between 1000m and 1700m elevation.



Yankuam Lodge: a very comfortable setting for night collecting on Rio Nangaritza, at about 1000m elevation in Zamora-Chinchipe. We stayed there several nights waiting out some heavy rains during a new moon. Rain, of course, only helps with light trapping.

The specimen photos were all taken with a Nikon D750 and either a 40 mm f/2.8 Micro-Nikkor or a 105 mm f/2.8 Sigma DG OS HSM lenses or with a Nikon Z-50 with a Z24-70 f/4 S lens with extension rings. A few specimens were also shot with a Z 105/2.8 S lens. Images of the smaller butterflies were obtained using focus- stacking. Illumination was in all cases provided by a 24 cm LED ring lite suspended about 15 cm above the subject.

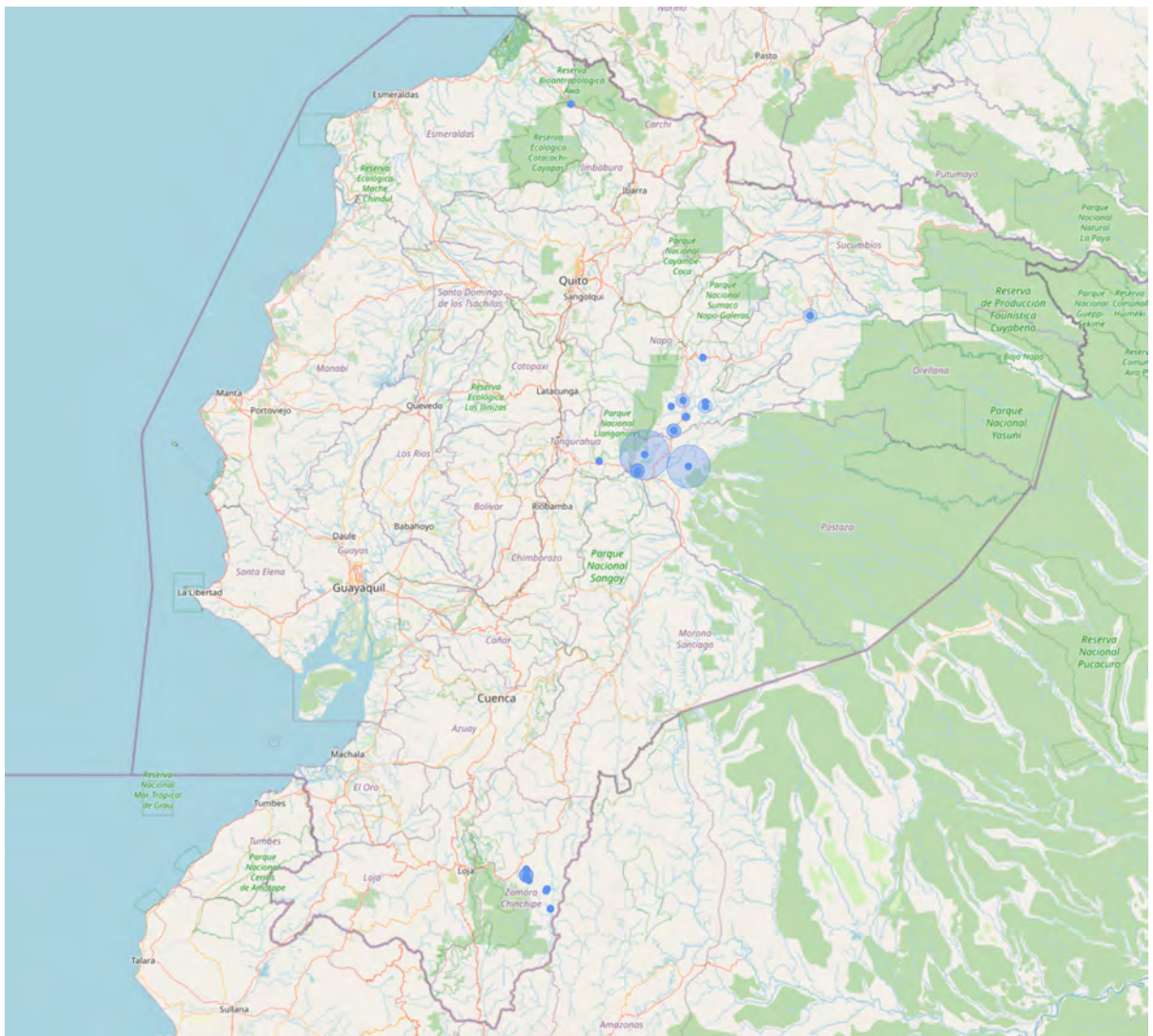


Left: Collecting near an abandoned roadside bar in the middle of the forest on the barely used winding mountain road from Zurmi (Rio Nangaritza) to the Rio Chumberiatza basin. I set up my tent inside the bar. 1600m elevation in Zamora-Chinchi. Right: an unexpected but not unwelcome visitor to the light trap.

All specimens shown are part of the Andrey Zheludev World Lepidoptera section of the Eidgenössische Technische Hochschule Zürich insect collection.

A. Zheludev, August 22, 2024.

Collecting sites



Superfamily *Bombycoidea* Latreille, 1802

Family *Saturniidae* Boisduval, 1837

Subfamily *Arsenurinae* Jordan, 1922

AZ22-0320

Arsenura a. archianassa
Draudt, 1930 ♂ 130mm

Chuchuvi, Esmeraldas, Ecuador,
1000m; August 2022



AZ21-0182

Arsenura a. armida (*Cramer, 1779*) ♂ 119mm

Tena, Napo, Ecuador, 650m; July
2021



AZ24-0465

Arsenura p. ponderosa *W. Rothschild, 1895* ♂ 163mm

Cab. Yankuam, Rio Nangaritza,
Zamora-Chinchiipe, Ecuador, 1000m;
August 2023



AZ21-0183

Copiopteryx semiramis andensis
(Lemaire, 1974) ♂ 109mm

Chuchuvi, Esmeraldas, Ecuador,
1000m; July 2021



AZ21-0184

Copiopteryx semiramis andensis
(Lemaire, 1974) ♂ 117mm

Chuchuvi, Esmeraldas, Ecuador,
1000m; July 2021



AZ22-0329

Dysdaemonia b. boreas
(Cramer, 1775) ♂ 135mm

Mera, Pastaza, Ecuador, 1100m;
August 2022



AZ22-0311

Grammopelta lineata (Schaus,
1906) ♂ 106mm

Chuchuvi, Esmeraldas, Ecuador,
1000m; August 2022



AZ22-0315

Grammopelta lineata (Schaus,
1906) ♂ 108mm

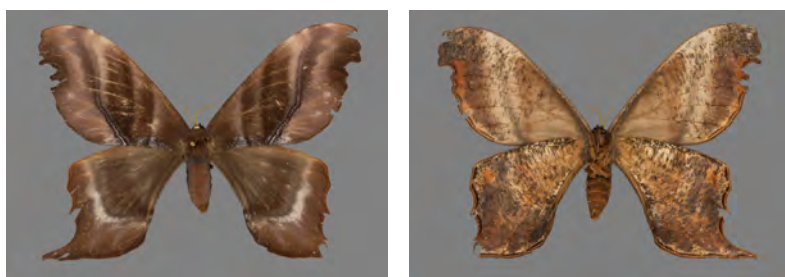
Chuchuvi, Esmeraldas, Ecuador,
1000m; August 2022



AZ24-0461

Paradaemonia p. platydesmia
(W. Rothschild, 1907) ♀ 123mm

Cab. Yankuam, Rio Nangaritzza,
Zamora-Chinchiipe, Ecuador, 1000m;
August 2023



AZ24-0462

Paradaemonia p. platydesmia
(*W. Rothschild, 1907*) ♂ 121mm

Cab. Yankuam, Rio Nangaritzza,
Zamora-Chinchiipe, Ecuador, 1000m;
August 2023



AZ21-0195

Paradaemonia samba (*Schaus, 1906*) ♂ 104mm

Tena, Napo, Ecuador, 650m; July
2021



AZ24-0460

Paradaemonia andensis
(*Rothschild, 1907*) ♂ 127mm

Via Nambija, San Carlos De Las
Minas, Zamora-Chinchiipe, Ecuador,
1700m; August 2023



AZ21-0189

Rhescyntis hippodamia
colombiana *Bouvier, 1927*
♀ 155mm

Chuchuvi, Esmeraldas, Ecuador,
1000m; July 2021



AZ21-0190

Rhescyntis hippodamia
colombiana *Bouvier, 1927*
♀ 151mm

Chuchuvi, Esmeraldas, Ecuador,
1000m; July 2021



AZ22-0321

Rhescyntis hippodamia
colombiana *Bouvier, 1927*
♂ 160mm

Chuchuvi, Esmeraldas, Ecuador,
1000m; August 2022



AZ21-0187

Rhescyntis h. hippodamia
(Cramer, 1777) ♂ 148mm

Tena, Napo, Ecuador, 650m; July
2021



AZ21-0191

Titaea lemoulti (Schaus, 1905)
♀ 142mm

Tena, Napo, Ecuador, 650m; July
2021



AZ21-0193

Titaea lemoulti (Schaus, 1905)
♂ 138mm

Tena, Napo, Ecuador, 650m; July
2021



AZ24-0463

Titaea tamerlan amazonensis
Lemaire, 1980 ♂ 138mm

Cab. Yankuam, Rio Nangaritzza,
Zamora-Chinchipe, Ecuador, 1000m;
August 2023



AZ21-0194

Titaea tamerlan nobilis (Schaus,
1912) ♂ 147mm

Chuchuvi, Esmeraldas, Ecuador,
1000m; July 2021



AZ24-0464

Titaea timur Weymer, 1930
♂ 149mm

Cab. Yankuam, Rio Nangaritzza,
Zamora-Chinchipe, Ecuador, 1000m;
August 2023

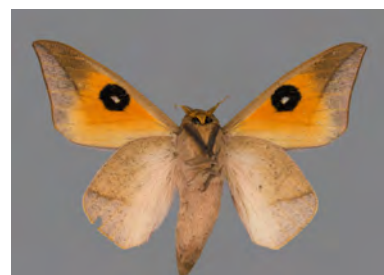


Subfamily *Ceratocampinae* Harris, 1841

AZ21-0055

Adeloneivaia acuta (Schaus, 1896) ♀ 73mmMera, Pastaza, Ecuador, 1000m;
July 2021

AZ21-0094

Adeloneivaia acuta (Schaus, 1896) ♂ 56mmMera, Pastaza, Ecuador, 1000m;
July 2021

AZ21-0197

Adeloneivaia boisduvalii (Doûmet, 1859) ♂ 66mmChuchuvi, Esmeraldas, Ecuador,
1000m; July 2021

AZ21-0096

Adeloneivaia catoxantha (W. Rothschild, 1907) ♂ 55mmMera, Pastaza, Ecuador, 1000m;
July 2021

AZ22-0374

Adeloneivaia catoxantha (W. Rothschild, 1907) ♂ 59mmMera, Pastaza, Ecuador, 1100m;
August 2022

AZ21-0179

Adeloneivaia j. jason (Boisduval, 1872) ♂ 81mmChuchuvi, Esmeraldas, Ecuador,
1000m; July 2021

AZ21-0196

Adeloneivaia j. jason
(*Boisduval, 1872*) ♂ 77mm

Tena, Napo, Ecuador, 650m; July 2021



AZ21-0178

Adeloneivaia subangulata
(*Herrich-Schäffer, 1855*) ♂ 66mm

Chuchuvi, Esmeraldas, Ecuador, 1000m; July 2021



AZ24-0429

Cicia pelota (*Schaus, 1905*)
♂ 45mm

Cab. Yankuam, Rio Nangaritzza,
Zamora-Chinchipe, Ecuador, 1000m;
August 2023



AZ21-0169

Citheronia aroa *Schaus, 1896*
♂ 82mm

Tena, Napo, Ecuador, 650m; July 2021



AZ24-0422

Citheronia aroa *Schaus, 1896*
♂ 81mm

Namakuntza, Rio Nambija,
Zamora-Chinchipe, Ecuador, 1100m;
August 2023



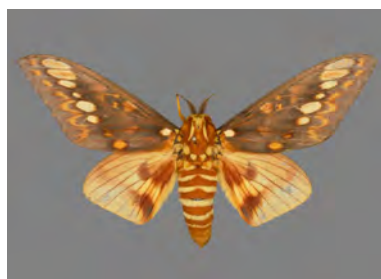
AZ21-0653

Citheronia b. bellavista *Draudt, 1930*
♂ 88mm

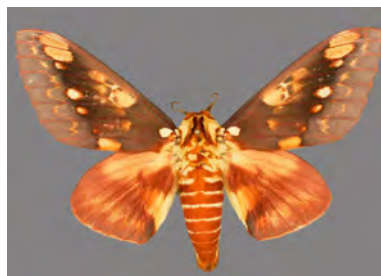
Chuchuvi, Esmeraldas, Ecuador, 1000m; July 2021



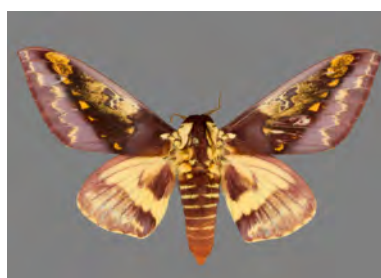
AZ22-0318

Citheronia b. bellavista Draudt,
1930 ♂ 92mmChuchuvi, Esmeraldas, Ecuador,
1000m; August 2022

AZ21-0168

Citheronia hamifera cf. fuscalis
Rothschild, 1907 ♂ 97mmTena, Napo, Ecuador, 650m; July
2021

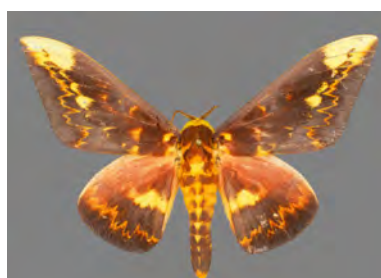
AZ24-0424

Citheronia phoronea (Cramer,
1779) ♂ 90mmNamakuntza, Rio Nambija,
Zamora-Chinchipec, Ecuador, 1100m;
August 2023

AZ24-0426

Citheronia phoronea (Cramer,
1779) ♂ 88mmCab. Yankuam, Rio Nangaritzza,
Zamora-Chinchipec, Ecuador, 1000m;
August 2023

AZ21-0180

Citheronioides collaris (W.
Rothschild, 1907) ♂ 96mmChuchuvi, Esmeraldas, Ecuador,
1000m; July 2021

AZ24-0433

Citioica anthonilis
(Herrich-Schäffer, 1854)
♂ 63mmCab. Yankuam, Rio Nangaritzza,
Zamora-Chinchipec, Ecuador, 1000m;
August 2023

AZ24-0427

Citioica homoea (W. Rothschild, 1907) ♂ 71mm

Via Nambija, San Carlos De Las Minas, Zamora-Chinchiipe, Ecuador, 1700m; August 2023



AZ21-0174

Eacles adoza Jordan, 1910 ♂ 81mm

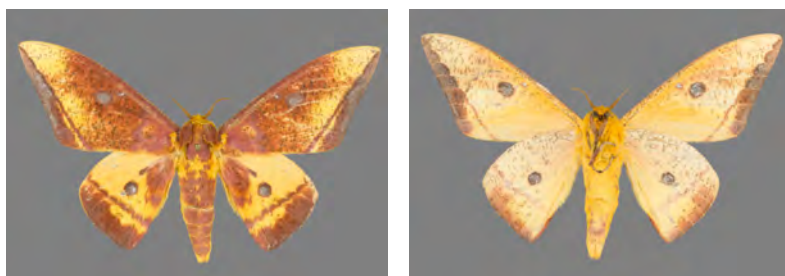
Tena, Napo, Ecuador, 650m; July 2021



AZ24-0421

Eacles callopterus W. Rothschild, 1907 ♂ 95mm

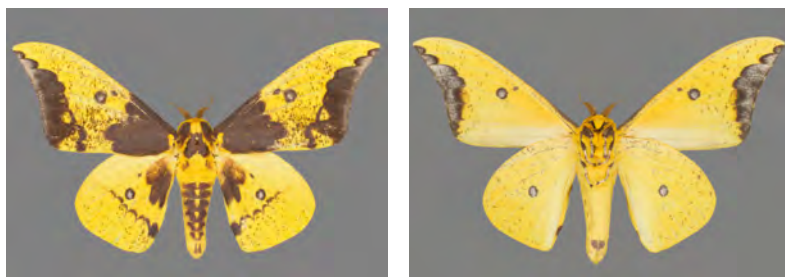
Cab. Yankuam, Rio Nangaritzza, Zamora-Chinchiipe, Ecuador, 1000m; August 2023



AZ21-0177

Eacles imperialis anchicayensis Lemaire, 1971 ♂ 120mm

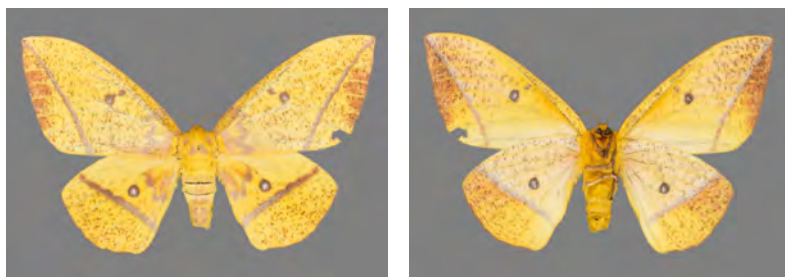
Chuchuvi, Esmeraldas, Ecuador, 1000m; July 2021



AZ22-0324

Eacles imperialis anchicayensis Lemaire, 1971 ♀ 139mm

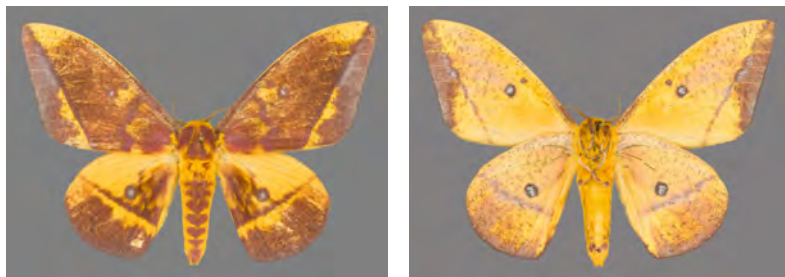
Chuchuvi, Esmeraldas, Ecuador, 1000m; August 2022



AZ24-0423

Eacles masoni fulvaster Rothschild, 1907 ♂ 102mm

Cab. Yankuam, Rio Nangaritzza, Zamora-Chinchiipe, Ecuador, 1000m; August 2023



AZ22-0317

Eacles ormondei niepelti
Draudt, 1930 ♂ 105mm

Chuchuvi, Esmeraldas, Ecuador,
 1000m; August 2022



AZ21-0175

Eacles ormondei peruviana
Bouvier, 1927 ♂ 84mm

Tena, Napo, Ecuador, 650m; July
 2021



AZ21-0176

Eacles penelope (Cramer, 1775)
 ♂ 140mm

Chuchuvi, Esmeraldas, Ecuador,
 1000m; July 2021



AZ24-0431

Eacles cf. penelope (Cramer, 1775)
 ♂ 120mm

Cab. Yankuam, Rio Nangaritzza,
 Zamora-Chinchipec, Ecuador, 1000m;
 August 2023



AZ21-0077

Othorene hodeva (Druce, 1904)
 ♀ 144mm

Mera, Pastaza, Ecuador, 1000m;
 July 2021



AZ21-0172

Othorene hodeva (Druce, 1904)
 ♂ 113mm

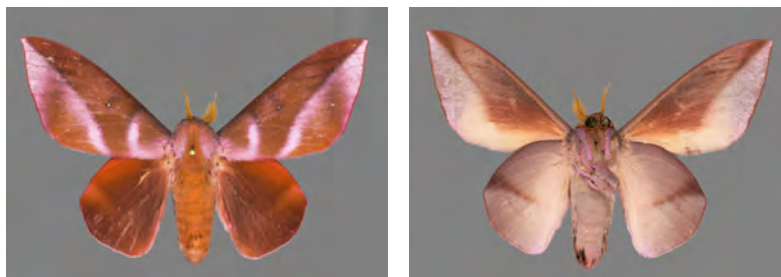
Tena, Napo, Ecuador, 650m; July
 2021



AZ21-0173

Othorene purpurascens (Schaus, 1905) ♂ 79mm

Chuchuvi, Esmeraldas, Ecuador, 1000m; July 2021



AZ24-0430

Rachesa reventador Lemaire, 1975 ♂ 87mm

Rd. to R. Chumberiaza, Zurmi, Zamora-Chinchipe, Ecuador, 1600m; August 2023



AZ24-0428

Schausiella longispina (Rothschild, 1907) ♂ 85mm

Cab. Yankuam, Rio Nangaritza, Zamora-Chinchipe, Ecuador, 1000m; August 2023



AZ24-0432

Syssphinx m. molina (Cramer, 1780) ♀ 108mm

Cab. Yankuam, Rio Nangaritza, Zamora-Chinchipe, Ecuador, 1000m; August 2023



Subfamily *Hemileucinae* Grote & Robinson, 1866

AZ24-0231

Ancistrota plagia Hübner, 1819 ♂ 50mm

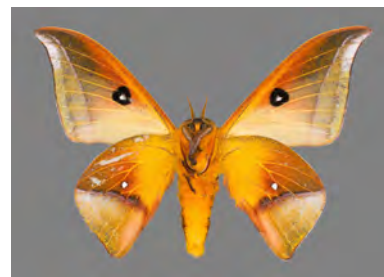
Namakuntza, Rio Nambija, Zamora-Chinchipe, Ecuador, 1100m; August 2023



AZ21-0148

Automerina auletes
(*Herrich-Schäffer, 1854*)
♂ 60mm

Tena, Napo, Ecuador, 650m; July
2021



AZ21-0146

Automerina caudatula (*Felder*
1874) ♀ 65mm

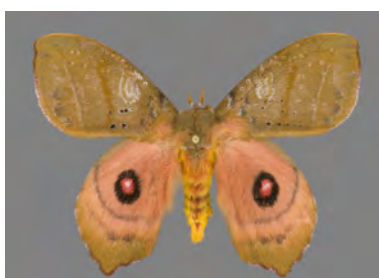
Tena, Napo, Ecuador, 650m; July
2021



AZ24-0438

Automerina caudatula (*Felder*
1874) ♂ 48mm

Cab. Yankuam, Rio Nangaritzza,
Zamora-Chinchiipe, Ecuador, 1000m;
August 2023



AZ24-0445

Automeris amanda subobscura
Weymer, 1909 ♀ 99mm

Rd. to R. Chumberiaza, Zurmi,
Zamora-Chinchiipe, Ecuador, 1600m;
August 2023



AZ21-0068

Automeris atrolimbata *Lemaire,*
1973 ♂ 61mm

Mera, Pastaza, Ecuador, 1000m;
July 2021



AZ24-0442

Automeris atrolimbata *Lemaire,*
1973 ♂ 72mm

Via Nambija, San Carlos De Las
Minas, Zamora-Chinchiipe, Ecuador,
1700m; August 2023



AZ22-0309

Automeris banus argentinifera
Lemaire 1966 ♂ 73mm

Chuchuvi, Esmeraldas, Ecuador,
1000m; August 2022



AZ21-0131

Automeris belti zaruma *Schaus,*
1921 ♂ 80mm

Chuchuvi, Esmeraldas, Ecuador,
1000m; July 2021



AZ21-0140

Automeris denticulata *Conte,*
1906 ♂ 73mm

Tena, Napo, Ecuador, 650m; July
2021



AZ21-0136

Automeris exigua *Lemaire, 1977*
♂ 112mm

Chuchuvi, Esmeraldas, Ecuador,
1000m; July 2021



AZ22-0307

Automeris exigua *Lemaire, 1977*
♂ 111mm

Chuchuvi, Esmeraldas, Ecuador,
1000m; August 2022



AZ21-0132

Automeris fieldi *Lemaire, 1969*
♂ 73mm

Chuchuvi, Esmeraldas, Ecuador,
1000m; July 2021



AZ21-0141

Automeris gabriellae Lemaire,
1966 ♂ 74mm

Tena, Napo, Ecuador, 650m; July
2021



AZ21-0142

Automeris gabriellae Lemaire,
1966 ♂ 70mm

Tena, Napo, Ecuador, 650m; July
2021



AZ21-0105

Automeris grammodes Jordan,
1912 ♂ 52mm

Mera, Pastaza, Ecuador, 1000m;
July 2021



AZ21-0145

Automeris hamata Schaus, 1906
♂ 65mm

Tena, Napo, Ecuador, 650m; July
2021



AZ24-0443

Automeris hamata Schaus, 1906
♂ 71mm

Cab. Yankuam, Rio Nangaritza,
Zamora-Chinchiipe, Ecuador, 1000m;
August 2023



AZ24-0446

Automeris larra (Walker, 1855)
♂ 105mm

Rd. to R. Chumberiaza, Zurmi,
Zamora-Chinchiipe, Ecuador, 1600m;
August 2023



AZ21-0144

Automeris liberia (Cramer,
1780) ♂ 76mm

Tena, Napo, Ecuador, 650m; July
2021



AZ22-0330

Automeris liberia (Cramer,
1780) ♂ 66mm

Mera, Pastaza, Ecuador, 1100m;
August 2022



AZ24-0444

Automeris liberia (Cramer,
1780) ♀ 84mm

Cab. Yankuam, Rio Nangaritzta,
Zamora-Chinchipec, Ecuador, 1000m;
August 2023



AZ21-0139

Automeris midea (Maassen &
Weyding, 1885) ♀ 95mm

Tena, Napo, Ecuador, 650m; July
2021



AZ21-0143

Automeris pomifera Schaus,
1906 ♂ 72mm

Tena, Napo, Ecuador, 650m; July
2021



AZ21-0138

Automeris postalbida Schaus,
1900 ♂ 117mm

Chuchuvi, Esmeraldas, Ecuador,
1000m; July 2021



AZ21-0135

Automeris zugana Druce, 1886
♂ 71mm

Chuchuvi, Esmeraldas, Ecuador,
1000m; July 2021



AZ21-0154

Dirphia cf. aculea Vuillot, 1892
♂ 65mm

Tena, Napo, Ecuador, 650m; July
2021



AZ21-0032

Dirphia avia (Stoll, 1780)
♂ 76mm

Mera, Pastaza, Ecuador, 1000m;
July 2021



AZ21-0656

Dirphia avia (Stoll, 1780)
♂ 84mm

Chuchuvi, Esmeraldas, Ecuador,
1000m; July 2021



AZ22-0372

Dirphia avia (Stoll, 1780)
♂ 91mm

Mera, Pastaza, Ecuador, 1100m;
August 2022



AZ24-0456

Dirphia avia (Stoll, 1780)
♀ 103mm

Rd. to R. Chumberiaza, Zurmi,
Zamora-Chinchipec, Ecuador, 1600m;
August 2023



AZ22-0328

Dirphia horca Dognin, 1894
♂ 63mm

Mera, Pastaza, Ecuador, 1100m;
August 2022



AZ21-0152

Dirphia s. somniculosa
(Cramer, 1777) ♂ 94mm

Chuchuvi, Esmeraldas, Ecuador,
1000m; July 2021



AZ21-0170

Dirphia s. somniculosa
(Cramer, 1777) ♀ 135mm

Chuchuvi, Esmeraldas, Ecuador,
1000m; July 2021



AZ21-0652

Dirphia subhorca Dognin, 1901
♂ 69mm

Chuchuvi, Esmeraldas, Ecuador,
1000m; July 2021



AZ24-0451

Dirphiopsis flora (Schaus, 1911)
♂ 61mm

Cab. Yankuam, Rio Nangaritzza,
Zamora-Chinchipe, Ecuador, 1000m;
August 2023



AZ21-0069

Gamelia abasia (Stoll, 1781)
♂ 52mm

Mera, Pastaza, Ecuador, 1000m;
July 2021



AZ24-0441

Gamelia cf. abasia (Stoll, 1781)

♂ 49mm

Cab. Yankuam, Rio Nangaritzza,
Zamora-Chinchiipe, Ecuador, 1000m;
August 2023



AZ21-0147

Gamelia ? pyrrhomelas
(Walker, 1856) ♂ 64mm

Tena, Napo, Ecuador, 650m; July
2021



AZ24-0455

Hirpida cf. gaujoni (Dognin,
1894) ♀ 71mm

Via Nambija, San Carlos De Las
Minas, Zamora-Chinchiipe, Ecuador,
1700m; August 2023



AZ24-0472

Hirpida cf. gaujoni (Dognin,
1894) ♂ 62mm

Via Nambija, San Carlos De Las
Minas, Zamora-Chinchiipe, Ecuador,
1700m; August 2023



AZ24-0450

Hylesia andensis Lemaire, 1988
♂ 44mm

Via Nambija, San Carlos De Las
Minas, Zamora-Chinchiipe, Ecuador,
1700m; August 2023



AZ21-0153

Hylesia annulata Schaus, 1911
♂ 46mm

Tena, Napo, Ecuador, 650m; July
2021



AZ21-0151

Hylesia canitia (Cramer, 1780)
♂ 45mmChuchuvi, Esmeraldas, Ecuador,
1000m; July 2021

AZ22-0345

Hylesia ? colombex Dognin,
1923 ♂ 37mmChuchuvi, Esmeraldas, Ecuador,
1000m; August 2022

AZ22-0348

Hylesia continua colombiana
Dognin, 1922 ♂ 48mmChuchuvi, Esmeraldas, Ecuador,
1000m; August 2022

AZ21-0167

Hylesia ? cottica Schaus, 1932
♀ 53mmTena, Napo, Ecuador, 650m; July
2021

AZ21-0163

Hylesia melanostigma
(Herrich-Schäffer, [1855])
♂ 52mmTena, Napo, Ecuador, 650m; July
2021

AZ24-0453

Hylesia cf. metabus (Cramer,
1775) ♀ 57mmCab. Yankuam, Rio Nangaritzza,
Zamora-Chinchiipe, Ecuador, 1000m;
August 2023

AZ21-0150

Hylesia nanus (Walker, 1855)
♂ 40mm

Tena, Napo, Ecuador, 650m; July
2021



AZ24-0436

Hylesia cf. obtusa Dognin, 1923
♀ 49mm

Cab. Yankuam, Rio Nangaritza,
Zamora-Chinchiipe, Ecuador, 1000m;
August 2023



AZ24-0437

Hylesia cf. obtusa Dognin, 1923
♂ 42mm

Cab. Yankuam, Rio Nangaritza,
Zamora-Chinchiipe, Ecuador, 1000m;
August 2023



AZ24-0439

Hylesia cf. obtusa Dognin, 1923
♂ 37mm

Namakuntza, Rio Nambija,
Zamora-Chinchiipe, Ecuador, 1100m;
August 2023



AZ22-0331

Hylesia ?spec. ♀ 65mm

Mera, Pastaza, Ecuador, 1100m;
August 2022



AZ22-0349

Hylesia ?spec. ♂ 50mm

Chuchuvi, Esmeraldas, Ecuador,
1000m; August 2022



AZ21-0137

Hyperchiria acuta (Conte,
1906) ♀ 67mm

Chuchuvi, Esmeraldas, Ecuador,
1000m; July 2021



AZ21-0031

Hyperchiria nausica (Cramer,
1779) ♂ 63mm

Mera, Pastaza, Ecuador, 1000m;
July 2021



AZ22-0327

Hyperchiria nausica (Cramer,
1779) ♂ 66mm

Mera, Pastaza, Ecuador, 1100m;
August 2022



AZ24-0440

Leucanella cf. contei (Lemaire,
1967) ♂ 95mm

Rd. to R. Chumberiaza, Zurmi,
Zamora-Chinchipe, Ecuador, 1600m;
August 2023



AZ21-0133

Leucanella flammans (Schaus,
1900) ♂ 85mm

Chuchuvi, Esmeraldas, Ecuador,
1000m; July 2021



AZ21-0670

Leucanella flammans (Schaus,
1900) ♂ 91mm

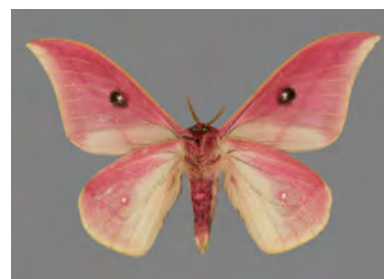
Chuchuvi, Esmeraldas, Ecuador,
1000m; July 2021



AZ22-0310

Leucanella flammans (Schaus, 1900) ♂ 79mm

Chuchuvi, Esmeraldas, Ecuador, 1100m; August 2022



AZ21-0095

Lonomia achelous (Cramer, 1777) ♂ 57mm

Mera, Pastaza, Ecuador, 1000m; July 2021



AZ21-0230

Molippa latemedia (Druce, 1890) ♂ 58mm

Tena, Napo, Ecuador, 650m; July 2021



AZ24-0434

Molippa cf. nibasa Maassen & Weyding, 1885 ♂ 79mm

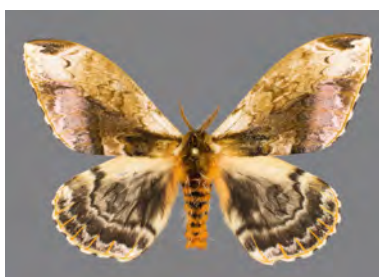
Rd. to R. Chumberiaza, Zurmi, Zamora-Chinchiipe, Ecuador, 1600m; August 2023



AZ21-0149

Molippa simillima Jones, 1907 ♂ 77mm

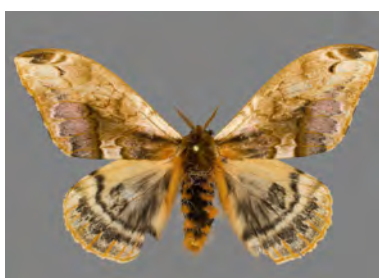
Tena, Napo, Ecuador, 650m; July 2021



AZ21-0160

Molippa simillima Jones, 1907 ♂ 74mm

Chuchuvi, Esmeraldas, Ecuador, 1000m; July 2021



AZ24-0452

Paradirphia cf. o. oblita
Lemaire, 1976 ♀ 73mm

Cab. Yankuam, Rio Nangaritzza,
Zamora-Chinchiipe, Ecuador, 1000m;
August 2023



AZ22-0308

Pseudautomeris antioquia
(Schaus, 1921) ♂ 84mm

Chuchuvi, Esmeraldas, Ecuador,
1000m; August 2022



AZ21-0156

Pseudodirphia agis (Cramer,
1775) ♂ 80mm

Chuchuvi, Esmeraldas, Ecuador,
1000m; July 2021



AZ24-0457

Pseudodirphia agis (Cramer,
1775) ♂ 79mm

Cab. Yankuam, Rio Nangaritzza,
Zamora-Chinchiipe, Ecuador, 1000m;
August 2023



AZ21-0157

Pseudodirphia eumedidoides
(Vuillot, 1892) ♂ 63mm

Tena, Napo, Ecuador, 650m; July
2021



Subfamily *Oxyteninae* Jordan, 1924

AZ21-0162

Therinia amphira (Druce, 1890)

♂ 58mm

Chuchuvi, Esmeraldas, Ecuador,
1000m; July 2021



AZ22-0438

Therinia buckleyi (Druce, 1890)

♂ 78mm

Mera, Pastaza, Ecuador, 1100m;
August 2022



AZ21-0161

Therinia b. buckleyi (Druce,
1890) ♂ 81mm

Chuchuvi, Esmeraldas, Ecuador,
1000m; July 2021



AZ24-0469

Therinia geometraria (Felder,
1862) ♂ 47mm

Cab. Yankuam, Rio Nangaritzza,
Zamora-Chinchiipe, Ecuador, 1000m;
August 2023



AZ23-0311

Therinia lactucina (Cramer,
1780) ♂ 62mm

El Capricho, Napo, Ecuador, 800m;
August 2023



AZ24-0471

Oxytenis cf. albilunulata
Schaus, 1912 ♂ 60mm

Rd. to R. Chumberiaza, Zurmi,
 Zamora-Chinchiipe, Ecuador, 1600m;
 August 2023



AZ24-0470

Oxytenis cf. leda Druce, 1906
 ♂ 73mm

Cab. Yankuam, Rio Nangaritza,
 Zamora-Chinchiipe, Ecuador, 1000m;
 August 2023



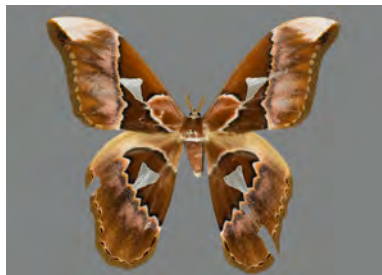
Subfamily *Saturniinae* Boisduval, 1837

Tribe *Attacini* Linnaeus, 1767

AZ21-0072

Rothschildia a. aurota (Cramer, 1775) ♂ 144mm

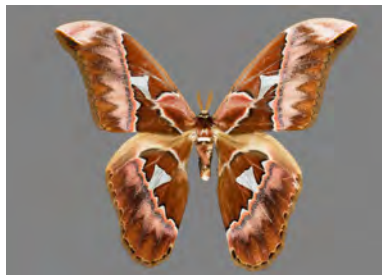
Mera, Pastaza, Ecuador, 1000m;
 July 2021



AZ21-0186

Rothschildia a. aurota (Cramer, 1775) ♂ 157mm

Tena, Napo, Ecuador, 650m; July
 2021



AZ24-0468

Rothschildia hesperus
(Linnaeus, 1758) ♂ 142mm

Cab. Yankuam, Rio Nangaritza,
 Zamora-Chinchiipe, Ecuador, 1000m;
 August 2023



AZ21-0181

Rothschildia jorulloides Dognin,
1895 ♂ 108mm

Chuchuvi, Esmeraldas, Ecuador,
1000m; July 2021



AZ22-0314

Rothschildia jorulloides Dognin,
1895 ♂ 107mm

Chuchuvi, Esmeraldas, Ecuador,
1000m; August 2022



AZ21-0073

Rothschildia lebeau inca W.
Rothschild, 1907 ♂ 126mm

Mera, Pastaza, Ecuador, 1000m;
July 2021



AZ21-0185

Rothschildia orizaba equatorialis
W. *Rothschild*, 1907 ♂ 137mm

Chuchuvi, Esmeraldas, Ecuador,
1000m; July 2021



AZ21-0071

Rothschildia orizaba peruviana
W. *Rothschild*, 1907 ♂ 111mm

Mera, Pastaza, Ecuador, 1000m;
July 2021



Tribe *Saturniini* Boisduval, 1837

AZ24-0466

Copaxa decrescens Walker, 1855
♀ 120mm

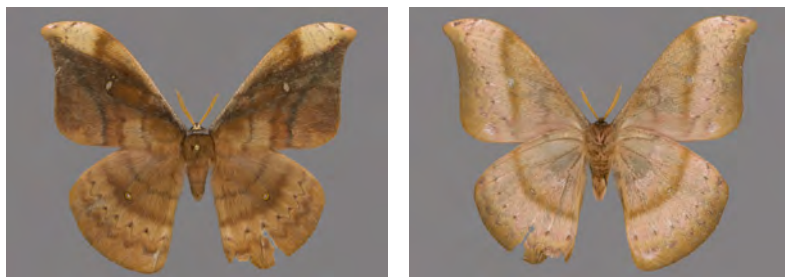
Namakuntza, Rio Nambija,
Zamora-Chinchiipe, Ecuador, 1100m;
August 2023



AZ24-0467

Copaxa decrescens Walker, 1855
♂ 104mm

Rd. to R. Chumberiaza, Zurmi,
Zamora-Chinchiipe, Ecuador, 1600m;
August 2023



AZ21-0074

Copaxa koenigi Lemaire, 1974
♂ 94mm

Mera, Pastaza, Ecuador, 1000m;
July 2021



AZ21-0164

Copaxa rufinans Schaus, 1906
♂ 91mm

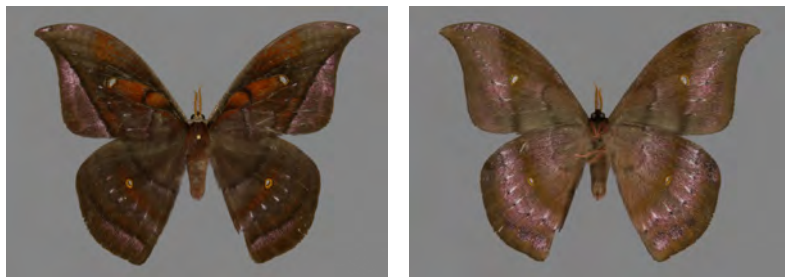
Chuchuvi, Esmeraldas, Ecuador,
1000m; July 2021



AZ22-0312

Copaxa cf. rufinans Schaus,
1906 ♂ 83mm

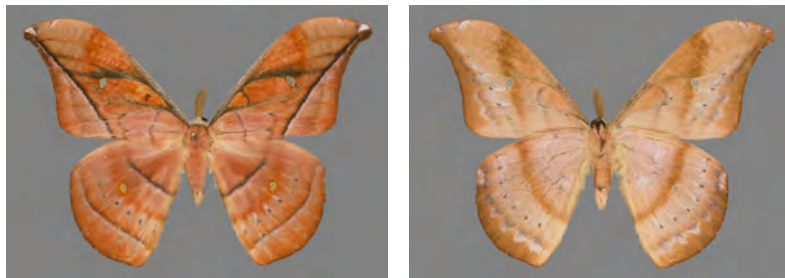
Chuchuvi, Esmeraldas, Ecuador,
1000m; August 2022



AZ22-0313

Copaxa rufinans Schaus, 1906
♂ 91mm

Chuchuvi, Esmeraldas, Ecuador,
1100m; August 2022



Family *Apatelodidae* Neumoegen & Dyar, 1894

AZ24-0393

Pantelodes cf. maranhensis
Herbin, 2017 ♂ 38mm

Cab. Yankuam, Rio Nangaritzza,
Zamora-Chinchi, Ecuador, 1000m;
August 2023



AZ22-0338

Hygrochroa albipunctata (Druce,
1898) ♂ 47mm

Chuchuvi, Esmeraldas, Ecuador,
1000m; August 2022



AZ24-0398

Hygrochroa dianita (Dognin,
1921) ♂ 54mm

Via Nambija, San Carlos De Las
Minas, Zamora-Chinchi, Ecuador,
1700m; August 2023



AZ24-0396

Hygrochroa firmiana (Stoll,
1782) ♂ 52mm

Via Nambija, San Carlos De Las
Minas, Zamora-Chinchi, Ecuador,
1700m; August 2023



AZ21-0104

Hygrochroa ilia (Dognin, 1916)
♂ 47mm

Mera, Pastaza, Ecuador, 1000m;
July 2021



AZ21-0100

Hygrochroa lapitha (Druce,
1900) ♂ 47mm

Chuchuvi, Esmeraldas, Ecuador,
1000m; July 2021



AZ21-0101

Hygrochroa ? nina (Stoll, 1780)
♂ 36mm

Mera, Pastaza, Ecuador, 1000m;
July 2021



AZ21-0655

Hygrochroa palma (Druce,
1900) ♂ 58mm

Chuchuvi, Esmeraldas, Ecuador,
1000m; July 2021



AZ21-0201

Hygrochroa pandara (Druce,
1898) ♂ 52mm

Chuchuvi, Esmeraldas, Ecuador,
1000m; July 2021



AZ22-0347

Hygrochroa pandarioides
(Schaus, 1905) ♂ 52mm

Chuchuvi, Esmeraldas, Ecuador,
1000m; August 2022



AZ24-0397

Hygrochroa pandarioides
(Schaus, 1905) ♂ 49mm

Namakuntza, Rio Nambija,
Zamora-Chinchiipe, Ecuador, 1100m;
August 2023



AZ24-0399

Hygrochroa pandarioides
(Schaus, 1905) ♀ 62mm

Rd. to R. Chumberiaza, Zurmi,
Zamora-Chinchiipe, Ecuador, 1600m;
August 2023



AZ24-0395

Falcatelodes anava (Druce,
1890) ♂ 40mm

Namakuntza, Rio Nambija,
Zamora-Chinchiipe, Ecuador, 1100m;
August 2023



AZ24-0387

Zanola cf. verago (Cramer,
[1777]) ♂ 35mm

Namakuntza, Rio Nambija,
Zamora-Chinchiipe, Ecuador, 1100m;
August 2023



AZ24-0392

Olceclostera magniplaga Schaus,
1910 ♂ 47mm

Rd. to R. Chumberiaza, Zurmi,
Zamora-Chinchiipe, Ecuador, 1600m;
August 2023



AZ24-0381

Anticla antica Walker, 1855
♂ 27mm

Via Nambija, San Carlos De Las
Minas, Zamora-Chinchiipe, Ecuador,
1700m; August 2023



Family *Bombycidae* Latreille, 1802

Subfamily *Epiinae* Draudt & Schaus, 1929

AZ21-0249

Arotros cf. nozama Herbin,
2021 ♂ 53mm

Tena, Napo, Ecuador, 650m; July
2021



AZ21-0103

Quentalia numalia Schaus, 1929
♂ 31mm

Mera, Pastaza, Ecuador, 1000m;
July 2021



AZ24-0376

Quentalia excisa (Maassen,
1890) ♂ 27mm

Namakuntza, Rio Nambija,
Zamora-Chinchiipe, Ecuador, 1100m;
August 2023



AZ24-0388

Quentalia cf. excisa (Maassen,
1890) ♀ 32mm

Cab. Yankuam, Rio Nangaritza,
Zamora-Chinchiipe, Ecuador, 1000m;
August 2023



AZ21-0199

Quentalia lividia (Druce, 1887)
♂ 34mm

Tena, Napo, Ecuador, 650m; July
2021



AZ22-0396

Quentalia lividia (Druce, 1887)
♂ 31mmChuchuvi, Esmeraldas, Ecuador,
1000m; August 2022

AZ24-0382

Quentalia intranea (Dognin,
1914) ♀ 34mmVia Nambija, San Carlos De Las
Minas, Zamora-Chinchipec, Ecuador,
1700m; August 2023

AZ24-0373

Quentalia incurvata (Dognin,
1922) ♂ 38mmRd. to R. Chumberiaza, Zurmi,
Zamora-Chinchipec, Ecuador, 1600m;
August 2023

AZ24-0375

Quentalia spec. ♂ 30mmRd. to R. Chumberiaza, Zurmi,
Zamora-Chinchipec, Ecuador, 1600m;
August 2023

AZ24-0374

Quentalia lapanensis Schaus,
1929 ♂ 42mmRd. to R. Chumberiaza, Zurmi,
Zamora-Chinchipec, Ecuador, 1600m;
August 2023

AZ24-0391

Quentalia lapanensis Schaus,
1929 ♀ 51mmRd. to R. Chumberiaza, Zurmi,
Zamora-Chinchipec, Ecuador, 1600m;
August 2023

AZ24-0316

Colla rhodope (Drury, 1782)

♂ 32mm

Cab. Yankuam, Rio Nangaritzza,
Zamora-Chinchiipe, Ecuador, 1000m;
August 2023



AZ21-0226

Colla opalifera Dognin, 1911

♂ 27mm

Tena, Napo, Ecuador, 650m; July
2021



AZ21-0198

Epia muscosa (Butler, 1878)

♀ 53mm

Chuchuvi, Esmeraldas, Ecuador,
1000m; July 2021



AZ21-0106

Epia casnonia (Druce, 1887)

♂ 38mm

Mera, Pastaza, Ecuador, 1000m;
July 2021



AZ21-0221

Epia lunilinea Schaus, 1920

♂ 44mm

Tena, Napo, Ecuador, 650m; July
2021



AZ24-0380

Epia lebethra (Druce, 1890)

♂ 34mm

Namakuntza, Rio Nambija,
Zamora-Chinchiipe, Ecuador, 1100m;
August 2023



AZ24-0379

Epia ?spec. ♂ 31mm

Cab. Yankuam, Rio Nangaritza,
Zamora-Chinchiipe, Ecuador, 1000m;
August 2023



AZ24-0385

Epia ?spec. ♀ 40mm

Cab. Yankuam, Rio Nangaritza,
Zamora-Chinchiipe, Ecuador, 1000m;
August 2023



AZ21-0028

Epia vulnerata (C.Felder &
R.Felder, 1874) ♂ 31mm

Mera, Pastaza, Ecuador, 1000m;
July 2021



AZ24-0386

Epia vulnerata (C.Felder &
R.Felder, 1874) ♂ 38mm

Rd. to R. Chumberiaza, Zurmi,
Zamora-Chinchiipe, Ecuador, 1600m;
August 2023



Family *Phiditiidae* Minet, 1994

AZ24-0266

Phiditia cf. *cuprea* (Kaye,
1901) ♂ 46mm

Cab. Yankuam, Rio Nangaritza,
Zamora-Chinchiipe, Ecuador, 1000m;
August 2023



Family *Sphingidae* Latreille, 1802

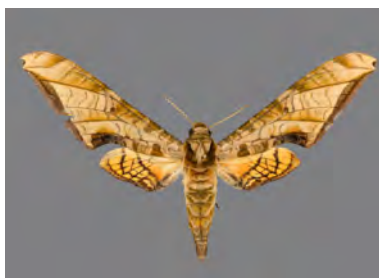
Subfamily *Smerinthinae* Grote & Robinson, 1865

Tribe *Ambulycini* Butler, 1876

AZ24-0417

Protambulyx euryalus
Rothschild & Jordan, 1903
♂ 107mm

Rd. to R. Chumberiaza, Zurmi,
Zamora-Chinchi, Ecuador, 1600m;
August 2023



AZ24-0418

Protambulyx euryalus
Rothschild & Jordan, 1903
♂ 113mm

Rd. to R. Chumberiaza, Zurmi,
Zamora-Chinchi, Ecuador, 1600m;
August 2023



AZ21-0206

Protambulyx eurycles
Herrich-Schäffer, [1854]
♂ 117mm

Chuchuvi, Esmeraldas, Ecuador,
1000m; July 2021



AZ21-0239

Protambulyx eurycles
Herrich-Schäffer, [1854]
♀ 147mm

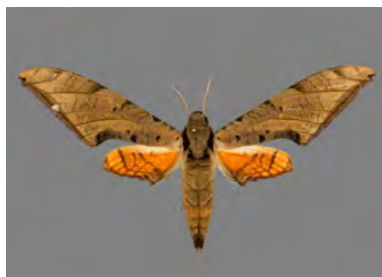
Chuchuvi, Esmeraldas, Ecuador,
1000m; July 2021



AZ21-0651

Protambulyx strigilis (Linnaeus, 1771) ♂ 117mm

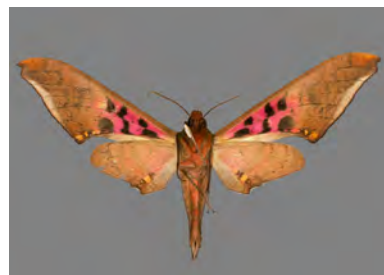
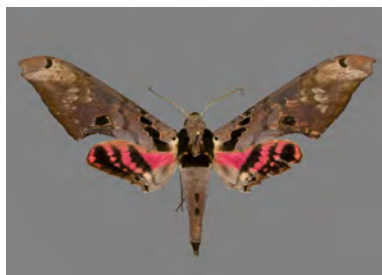
Chuchuvi, Esmeraldas, Ecuador, 1000m; July 2021



AZ21-0207

Adhemarius g. gannascus (Stoll, [1790]) ♂ 116mm

Chuchuvi, Esmeraldas, Ecuador, 1000m; July 2021



AZ24-0419

Adhemarius t. tigrina R. Felder, [1874] ♂ 111mm

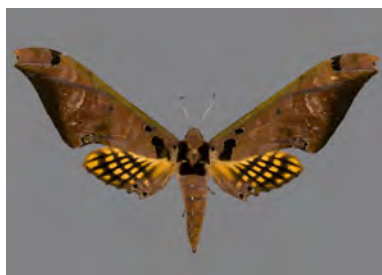
Rd. to R. Chumberiaza, Zurmi, Zamora-Chinchipe, Ecuador, 1600m; August 2023



AZ24-0420

Adhemarius t. tigrina R. Felder, [1874] ♀ 127mm

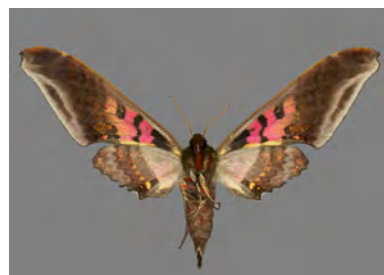
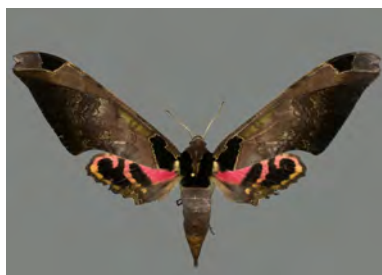
Via Nambija, San Carlos De Las Minas, Zamora-Chinchipe, Ecuador, 1700m; August 2023



AZ21-0051

Adhemarius ypsilon Rothschild & Jordan, 1903 ♀ 119mm

Mera, Pastaza, Ecuador, 1000m; July 2021



Subfamily *Sphinginae* Latreille, [1802]

Tribe *Sphingini* Latreille, [1802]

AZ24-0416

Manduca albiplaga (Walker, 1856) ♂ 143mm

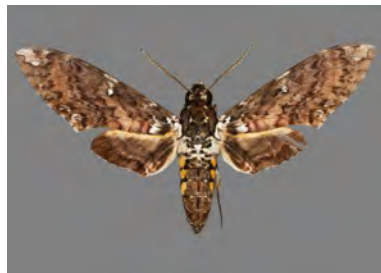
Cab. Yankuam, Rio Nangaritzza, Zamora-Chinchiipe, Ecuador, 1000m; August 2023



AZ21-0238

Manduca d. dalica Kirby, 1877 ♂ 121mm

Chuchuvi, Esmeraldas, Ecuador, 1000m; July 2021



AZ22-0316

Manduca incisa (Walker, 1856) ♂ 111mm

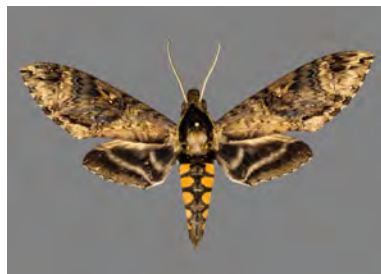
Chuchuvi, Esmeraldas, Ecuador, 1000m; August 2022



AZ21-0203

Manduca pellenia Herrich-Schäffer, 1854 ♂ 112mm

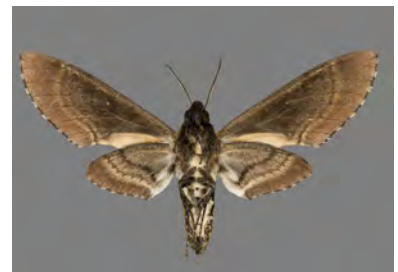
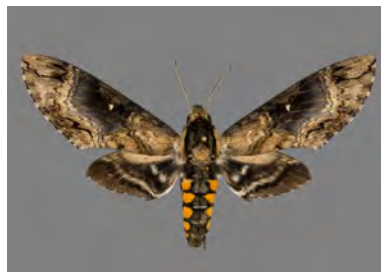
Chuchuvi, Esmeraldas, Ecuador, 1000m; July 2021



AZ24-0414

Manduca cf. reducta (Gehlen, 1930) ♂ 103mm

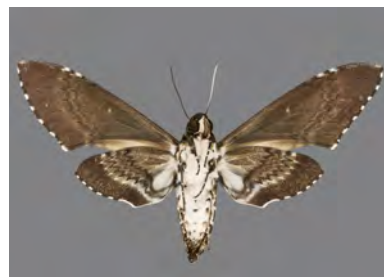
Via Nambija, San Carlos De Las Minas, Zamora-Chinchiipe, Ecuador, 1700m; August 2023



AZ24-0415

Manduca r. rustica (Fabricius, 1775) ♀ 127mm

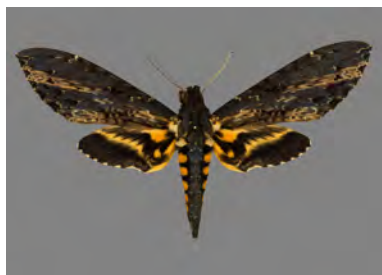
Cab. Yankuam, Rio Nangaritza, Zamora-Chinchiipe, Ecuador, 1000m; August 2023



AZ22-0323

Neococytius cluentius (Cramer, [1776]) ♀ 161mm

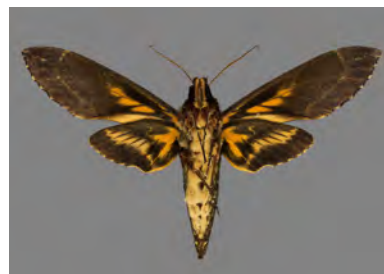
Chuchuvi, Esmeraldas, Ecuador, 1000m; August 2022



AZ22-0326

Neococytius cluentius (Cramer, [1776]) ♂ 134mm

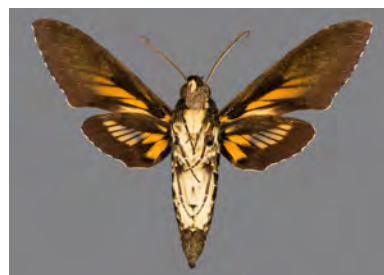
Mera, Pastaza, Ecuador, 1100m; August 2022



AZ21-0235

Cocytius duponchel (Poey, 1832) ♂ 111mm

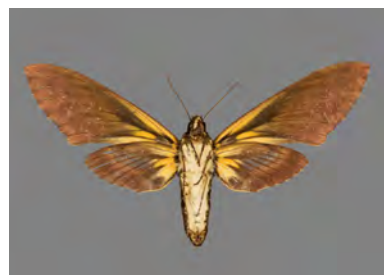
Chuchuvi, Esmeraldas, Ecuador, 1000m; July 2021



AZ22-0322

Cocytius lucifer Rothschild & Jordan, 1903 ♀ 167mm

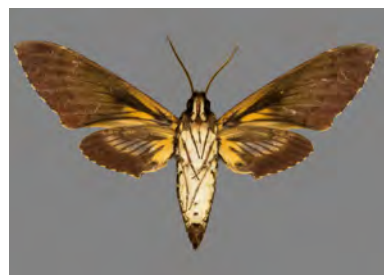
Chuchuvi, Esmeraldas, Ecuador, 1000m; August 2022



AZ22-0371

Cocytius lucifer Rothschild & Jordan, 1903 ♂ 148mm

Mera, Pastaza, Ecuador, 1100m; August 2022



Tribe *Acherontiini* Boisduval, [1875]

AZ21-0205

Agrius cingulata (Fabricius,
1775) ♀ 100mm

Chuchuvi, Esmeraldas, Ecuador,
1000m; July 2021



Subfamily *Macroglossinae* Harris, 1839

Tribe *Dilophonotini* Burmeister, 1878

Subtribe *Dilophonotina* Burmeister, 1878

AZ22-0332

Enyo ocypete (Linnaeus, 1758)
♀ 56mm

Chuchuvi, Esmeraldas, Ecuador,
1000m; August 2022



AZ21-0234

Callionima denticulata (Schaus,
1895) ♂ 73mm

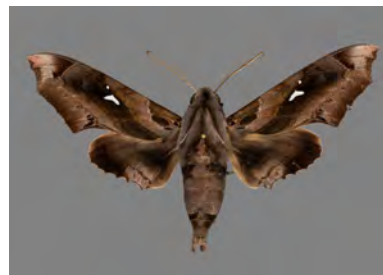
Chuchuvi, Esmeraldas, Ecuador,
1000m; July 2021



AZ21-0233

Madoryx plutonius dentatus
Gehlen, 1931 ♂ 90mm

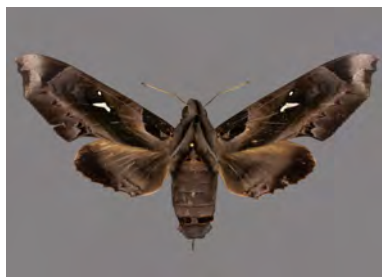
Chuchuvi, Esmeraldas, Ecuador,
1000m; July 2021



AZ21-0240

Madoryx plutonius dentatus
Gehlen, 1931 ♀ 120mm

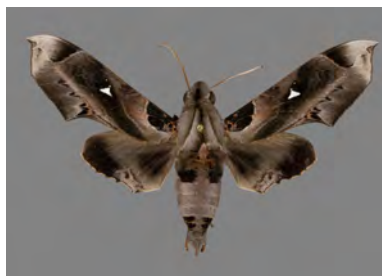
Chuchuvi, Esmeraldas, Ecuador,
1000m; July 2021



AZ24-0410

Madoryx p. plutonius (Hübner,
[1819]) ♂ 87mm

Cab. Yankuam, Rio Nangaritza,
Zamora-Chinchiipe, Ecuador, 1000m;
August 2023



AZ24-0413

Stolidoptera tachasara (Druce,
1888) ♂ 88mm

Rd. to R. Chumberiaza, Zurmi,
Zamora-Chinchiipe, Ecuador, 1600m;
August 2023



AZ21-0202

Oryba kadeni Schaufuss, 1870
♀ 113mm

Chuchuvi, Esmeraldas, Ecuador,
1000m; July 2021



AZ22-0333

Oryba kadeni Schaufuss, 1870
♂ 108mm

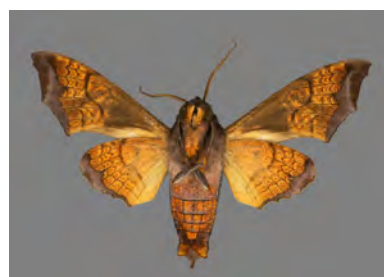
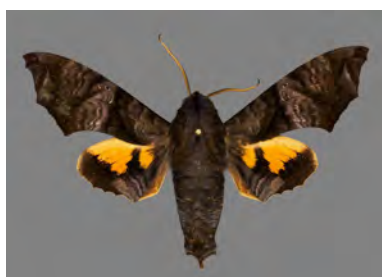
Chuchuvi, Esmeraldas, Ecuador,
1000m; August 2022



AZ22-0373

Nyceryx coffeae Walker, 1856
♂ 68mm

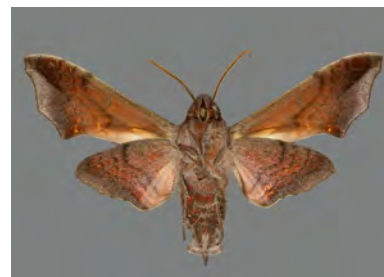
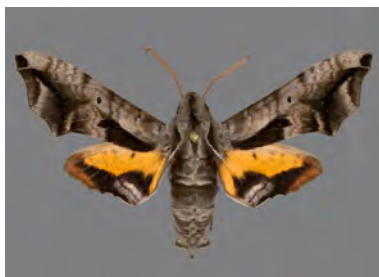
Mera, Pastaza, Ecuador, 1100m;
August 2022



AZ24-0403

Nyceryx cf. maxwelli
(Rothschild, 1896) ♂ 60mm

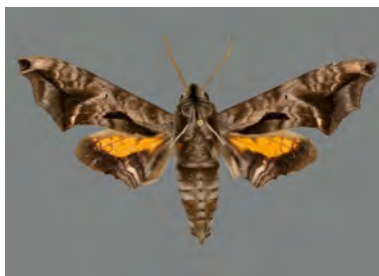
Cab. Yankuam, Rio Nangaritza,
Zamora-Chinchiipe, Ecuador, 1000m;
August 2023



AZ24-0405

Nyceryx aff. maxwelli
(Rothschild, 1896) ♂ 69mm

Cab. Yankuam, Rio Nangaritza,
Zamora-Chinchiipe, Ecuador, 1000m;
August 2023



AZ24-0406

Perigonia l. lusca (Fabricius,
1777) ♂ 60mm

Via Nambija, San Carlos De Las
Minas, Zamora-Chinchiipe, Ecuador,
1700m; August 2023



AZ21-0114

Perigonia stulta
Herrich-Schäffer, [1854]
♂ 55mm

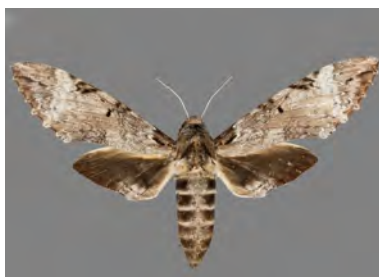
Mera, Pastaza, Ecuador, 1000m;
July 2021



AZ21-0204

Pseudosphinx tetrio (Linnaeus,
1771) ♀ 146mm

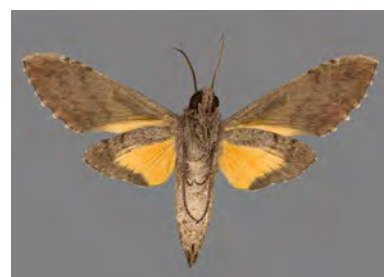
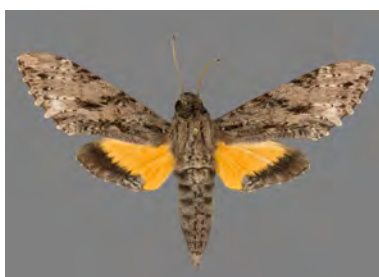
Chuchuvi, Esmeraldas, Ecuador,
1000m; July 2021



AZ24-0411

Isognathus cf. rimosus (Grote,
1865) ♂ 88mm

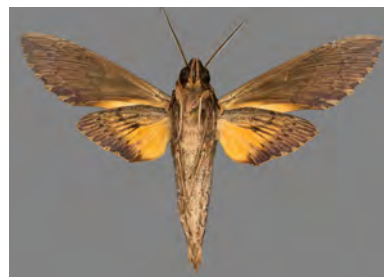
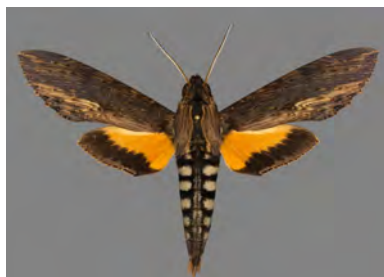
Cab. Yankuam, Rio Nangaritza,
Zamora-Chinchiipe, Ecuador, 1000m;
August 2023



AZ21-0237

Erinnyis a. alope (Drury,
[1770]) ♂ 97mm

Chuchuvi, Esmeraldas, Ecuador,
1000m; July 2021



Tribe *Philampelini* Burmeister, 1878

AZ21-0241

Eumorpha anchemolus
(Cramer, [1780]) ♀ 159mm

Chuchuvi, Esmeraldas, Ecuador,
1000m; July 2021



AZ21-0052

Eumorpha triangulum
Rothschild & Jordan, 1903
♂ 114mm

Mera, Pastaza, Ecuador, 1000m;
July 2021



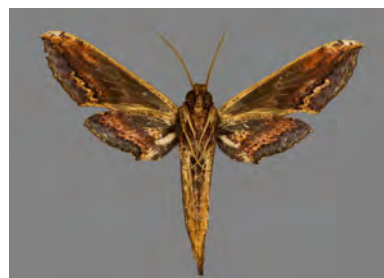
Tribe *Macroglossini* Harris, 1839

Subtribe *Choerocampina* Grote & Robinson, 1865

AZ21-0214

Xylophanes ceratomioides
(Grote & Robinson, 1867)
♂ 93mm

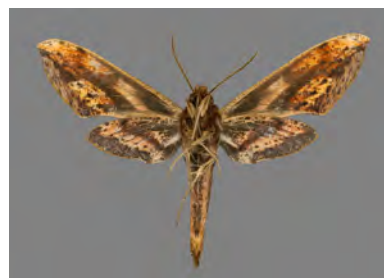
Chuchuvi, Esmeraldas, Ecuador,
1000m; July 2021



AZ24-0412

Xylophanes cf. ceratomioides
(Grote & Robinson, 1867)
♂ 88mm

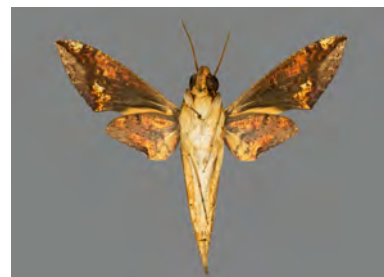
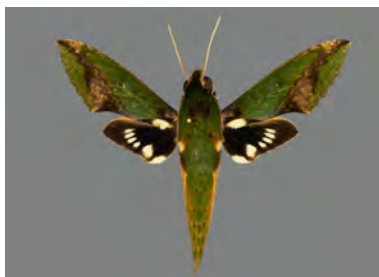
Via Nambija, San Carlos De Las
Minas, Zamora-Chinchipe, Ecuador,
1700m; August 2023



AZ21-0216

Xylophanes chiron nechus
(Cramer, [1777]) ♂ 77mm

Chuchuvi, Esmeraldas, Ecuador,
1000m; July 2021



AZ24-0401

Xylophanes cf. dolius
Rothschild & Jordan, 1906
♂ 65mm

Rd. to R. Chumberiaza, Zurmi,
Zamora-Chinchiipe, Ecuador, 1600m;
August 2023



AZ22-0319

Xylophanes fusimacula R.
Felder, [1874] ♂ 79mm

Chuchuvi, Esmeraldas, Ecuador,
1000m; August 2022



AZ21-0212

Xylophanes mirabilis Clark,
1916 ♂ 84mm

Chuchuvi, Esmeraldas, Ecuador,
1000m; July 2021



AZ21-0213

Xylophanes mirabilis Clark,
1916 ♂ 82mm

Chuchuvi, Esmeraldas, Ecuador,
1000m; July 2021



AZ24-0408

Xylophanes nabuchodonosor
Oberthür, 1904 ♂ 97mm

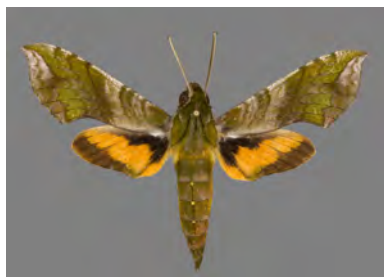
Cab. Yankuam, Rio Nangaritza,
Zamora-Chinchiipe, Ecuador, 1000m;
August 2023



AZ24-0404

Xylophanes pluto (Fabricius,
1777) ♂ 69mm

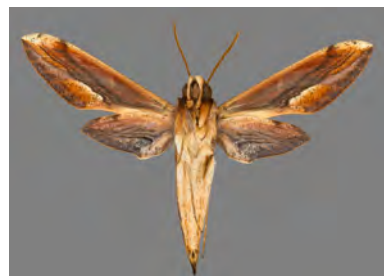
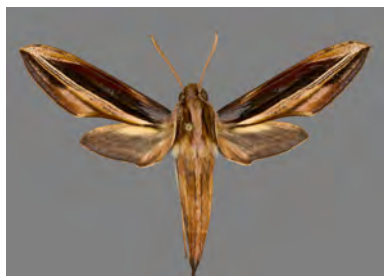
Via Nambija, San Carlos De Las
Minas, Zamora-Chinchipec, Ecuador,
1700m; August 2023



AZ24-0402

Xylophanes pyrrihus Rothschild
& Jordan, 1906 ♂ 75mm

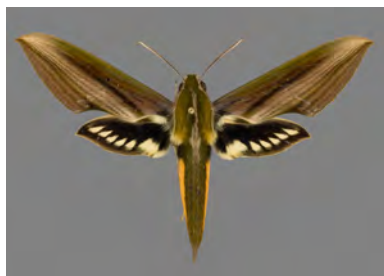
Via Nambija, San Carlos De Las
Minas, Zamora-Chinchipec, Ecuador,
1700m; August 2023



AZ24-0409

Xylophanes tersa cf. *chaconi*
De Marmels et al. 1996 ♂ 82mm

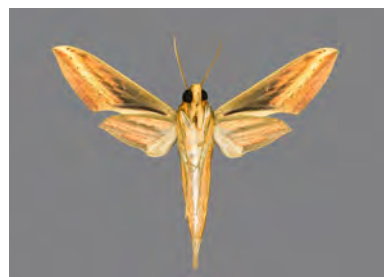
Via Nambija, San Carlos De Las
Minas, Zamora-Chinchipec, Ecuador,
1700m; August 2023



AZ21-0063

Xylophanes titana (Druce,
1878) ♂ 77mm

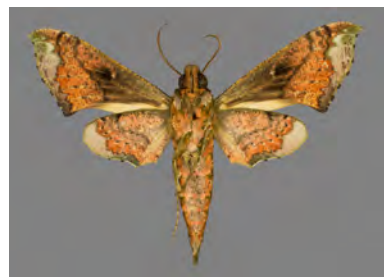
Mera, Pastaza, Ecuador, 1000m;
July 2021



AZ21-0211

Xylophanes zurcheri Druce,
1894 ♂ 90mm

Chuchuvi, Esmeraldas, Ecuador,
1000m; July 2021



Superfamily *Noctuoidea* Latreille, 1809

Family *Noctuidae* Latreille, 1809

Subfamily *Condicinae* Poole, 1995

Tribe *Condicini* Poole, 1995

AZ24-0360

Chytonix cf. *splendens* (Druce,
1890) ♂ 27mm

Namakuntza, Rio Nambija,
Zamora-Chinchi, Ecuador, 1100m;
August 2023



Subfamily *Hadeninae* Guenée, 1837

AZ24-0365

Selambina trajiciens Walker,
1858 ♂ 31mm

Rd. to R. Chumberiaza, Zurmi,
Zamora-Chinchi, Ecuador, 1600m;
August 2023



Tribe *Eriopygini* Fibiger & Lafontaine, 2005

AZ24-0363

Hydroeciodes spec. ♀ 25mm

Via Nambija, San Carlos De Las
Minas, Zamora-Chinchipe, Ecuador,
1700m; August 2023



Subfamily *Agaristinae* Boisduval, 1833

AZ21-0263

Aucula gura Todd & Poole, 1981
♂ 46mm

Tena, Napo, Ecuador, 650m; July
2021



AZ24-0384

Darceta severa (Stoll, [1782])
♀ 58mm

Via Nambija, San Carlos De Las
Minas, Zamora-Chinchipe, Ecuador,
1700m; August 2023



AZ21-0559

Orthia augias Herrich-Schäffer,
[1853] ♂ 47mm

Tena, Napo, Ecuador, 650m; July
2021



AZ22-0283

Orthia augias Herrich-Schäffer,
[1853] ♂ 50mm

Coca, Orellana, Ecuador, 300m;
August 2022



AZ23-0493

Parothria ecuadorina
(Westwood, 1877) ♂ 52mm

Via Nambija, San Carlos De Las
Minas, Zamora-Chinchiipe, Ecuador,
1700m; August 2023



AZ24-0383

Parothria ecuadorina
(Westwood, 1877) ♂ 51mm

Namakuntza, Rio Nambija,
Zamora-Chinchiipe, Ecuador, 1100m;
August 2023



Subfamily *Bagisarinae* Crumb, 1956

AZ24-0364

Argyrosticta cf. ditissima
(Walker, [1858]) ♂ 35mm

Rd. to R. Chumberiaza, Zurmi,
Zamora-Chinchiipe, Ecuador, 1600m;
August 2023

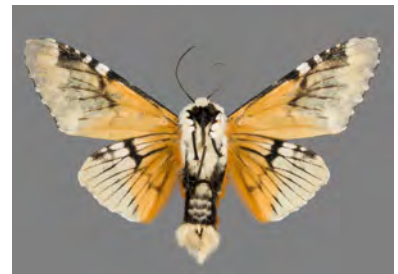


Subfamily *Pantheinae* Smith, 1898

AZ24-0108

Bathyra sagata (Walker, 1856)
♂ 62mm

Via Nambija, San Carlos De Las
Minas, Zamora-Chinchiipe, Ecuador,
1700m; August 2023



AZ21-0026

Lichnoptera cf. gulo
Herrich-Schäffer, [1856]

♂ 45mm

Mera, Pastaza, Ecuador, 1000m;
July 2021



Subfamily *Dyopsinae* Guenée, 1852

AZ22-0458

Ceroctena amynta (*Cramer, [1779]*) ♂ 42mm

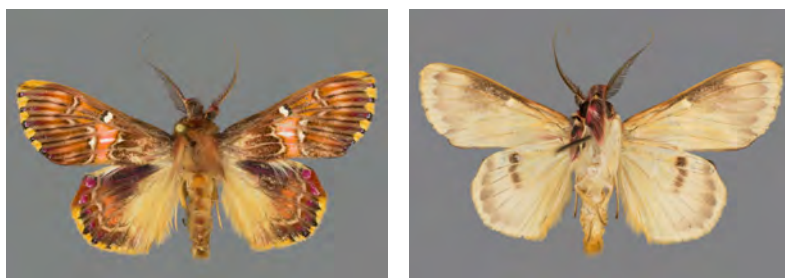
Mera, Pastaza, Ecuador, 1100m;
August 2022



AZ21-0261

Sosxetra grata *Walker, 1862*
♂ 42mm

Chuchuvi, Esmeraldas, Ecuador,
1000m; July 2021



Family *Notodontidae* Stephens, 1829

AZ21-0262

Eragisa antarorum Thiaucourt,
1991 ♂ 55mm

Tena, Napo, Ecuador, 650m; July
2021



AZ21-0271

Lirimiris elongata (Schaus,
1906) ♀ 111mm

Chuchuvi, Esmeraldas, Ecuador,
1000m; July 2021



AZ21-0218

Lirimiris meridionalis (Schaus,
1904) ♂ 78mm

Tena, Napo, Ecuador, 650m; July
2021



AZ21-0220

Lirimiris mirabilis Rothschild,
1917 ♀ 81mm

Chuchuvi, Esmeraldas, Ecuador,
1000m; July 2021



AZ21-0219

Hapigia curvilinea Schaus, 1904
♀ 66mm

Chuchuvi, Esmeraldas, Ecuador,
1000m; July 2021



AZ24-0390

Hapigia raatzi (Möschler, 1883)
♂ 70mm

Via Nambija, San Carlos De Las
Minas, Zamora-Chinchipec, Ecuador,
1700m; August 2023



AZ24-0338

Hapigia cf. smerinthina Schaus,
1928 ♀ 96mm

Via Nambija, San Carlos De Las
Minas, Zamora-Chinchipec, Ecuador,
1700m; August 2023



AZ21-0272

Naprepa elongata Schaus, 1901
♂ 94mm

Tena, Napo, Ecuador, 650m; July
2021



AZ22-0335

Naprepa houla Dyar, 1911
♂ 87mm

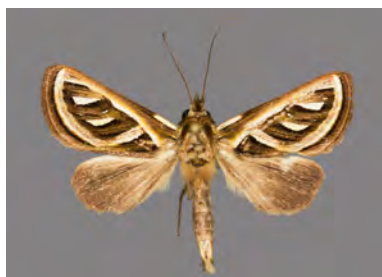
Chuchuvi, Esmeraldas, Ecuador,
1000m; August 2022



AZ21-0557

Lepasta grammodes (R.Felder,
1874) ♂ 32mm

Chuchuvi, Esmeraldas, Ecuador,
1000m; July 2021



AZ21-0269

Arpema megalopia Schaus, 1915
♂ 65mm

Chuchuvi, Esmeraldas, Ecuador,
1000m; July 2021



Subfamily *Stauropinae* Matsumura, 1925

Tribe *Dicranurini* Duponchel, [1845]

AZ24-0347

Americerura rarata (Walker,
1865) ♂ 44mm

Cab. Yankuam, Rio Nangaritza,
Zamora-Chinchiipe, Ecuador, 1000m;
August 2023



Subfamily *Hemiceratinae* Guenée, 1852

AZ24-0334

Hemiceras punctata Dognin,
1889 ♂ 43mm

Cab. Yankuam, Rio Nangaritza,
Zamora-Chinchiipe, Ecuador, 1000m;
August 2023



AZ24-0358

Hemiceras gortynoides Schaus,
1906 ♀ 39mm

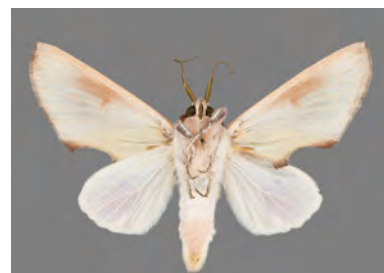
Cab. Yankuam, Rio Nangaritza,
Zamora-Chinchiipe, Ecuador, 1000m;
August 2023



AZ24-0335

Hemiceras cf. conspirata
Schaus, 1906 ♂ 51mm

Cab. Yankuam, Rio Nangaritza,
Zamora-Chinchiipe, Ecuador, 1000m;
August 2023



AZ24-0332

Hemiceras flava Schaus, 1905

♂ 47mm

Cab. Yankuam, Rio Nangaritza,
Zamora-Chinchiipe, Ecuador, 1000m;
August 2023



AZ22-0449

Hemiceras cf. zula Schaus,
1911 ♂ 42mm

Mera, Pastaza, Ecuador, 1100m;
August 2022



AZ21-0267

Hemiceras violascens Guenée,
1852 ♀ 50mm

Chuchuvi, Esmeraldas, Ecuador,
1000m; July 2021



AZ24-0341

Hemiceras sabis Guenée, 1852
♂ 39mm

Cab. Yankuam, Rio Nangaritza,
Zamora-Chinchiipe, Ecuador, 1000m;
August 2023



AZ24-0342

Hemiceras cf. fabriennae
Thiaucourt, 1978 ♂ 37mm

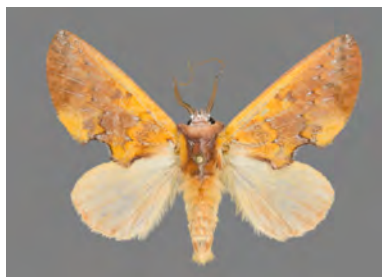
Cab. Yankuam, Rio Nangaritza,
Zamora-Chinchiipe, Ecuador, 1000m;
August 2023



AZ24-0344

Hemiceras flavescens Schaus,
1906 ♂ 38mm

Cab. Yankuam, Rio Nangaritza,
Zamora-Chinchiipe, Ecuador, 1000m;
August 2023



Subfamily *Heterocampinae* Neumoegen & Dyar, 1894

AZ21-0251

Lobeza cf. aglone
Herrich-Schäffer, 1855 ♀ 96mm

Chuchuvi, Esmeraldas, Ecuador,
1000m; July 2021



AZ22-0337

Lobeza medina Schaus, 1928
♂ 67mm

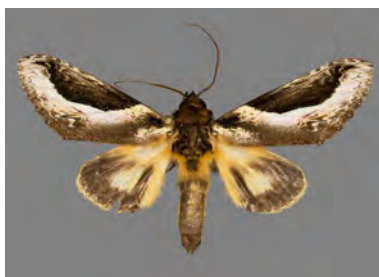
Chuchuvi, Esmeraldas, Ecuador,
1000m; August 2022



AZ21-0268

Rhuda cf. focula (Stoll, [1782])
♂ 59mm

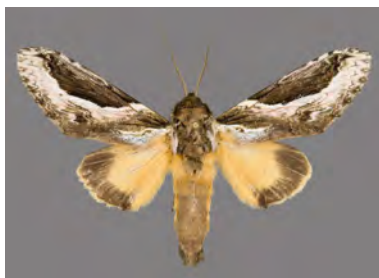
Chuchuvi, Esmeraldas, Ecuador,
1000m; July 2021



AZ24-0336

Rhuda cf. diffusum (Felder, 1874) ♂ 53mm

Cab. Yankuam, Rio Nangaritzza,
Zamora-Chinchiipe, Ecuador, 1000m;
August 2023



AZ22-0445

Disphragis lama (Schaus, 1906)
♀ 48mm

Mera, Pastaza, Ecuador, 1100m;
August 2022



AZ22-0350

Disphragis tumacona Draudt,
1932 ♂ 42mm

Chuchuvi, Esmeraldas, Ecuador,
1000m; August 2022



AZ24-0378

Disphragis remuria (Druce,
1898) ♂ 51mm

Via Nambija, San Carlos De Las
Minas, Zamora-Chinchiipe, Ecuador,
1700m; August 2023



AZ24-0331

Disphragis splendens (Druce,
1887) ♂ 42mm

Namakuntza, Rio Nambija,
Zamora-Chinchiipe, Ecuador, 1100m;
August 2023



AZ22-0351

Ophitis lemoulti (Schaus, 1906)
♂ 56mm

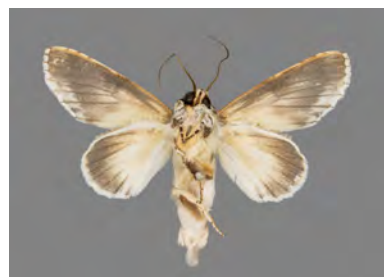
Chuchuvi, Esmeraldas, Ecuador,
1000m; August 2022



AZ22-0342

Rifargia cf. distinguenda
(Walker, 1856) ♂ 47mm

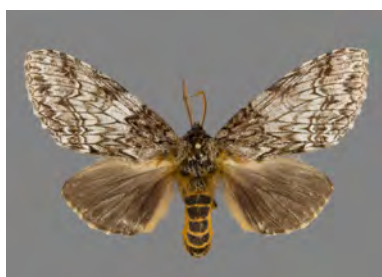
Chuchuvi, Esmeraldas, Ecuador,
1000m; August 2022



AZ24-0337

Malocampa amphissa (Druce,
1890) ♂ 78mm

Rd. to R. Chumberiaza, Zurmi,
Zamora-Chinchiipe, Ecuador, 1600m;
August 2023



AZ21-0270

Malocampa lunula Dognin, 1908

♀ 54mm

Tena, Napo, Ecuador, 650m; July 2021



AZ24-0340

Sericochroa hymen (Dyar, 1908)

♂ 41mm

Cab. Yankuam, Rio Nangaritza, Zamora-Chinchiipe, Ecuador, 1000m; August 2023



AZ24-0368

Sericochroa tenuis (Schaus, 1892) ♂ 32mm

Cab. Yankuam, Rio Nangaritza, Zamora-Chinchiipe, Ecuador, 1000m; August 2023

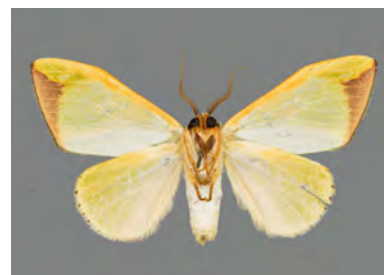


AZ22-0447

Rosema zelica (Stoll, [1790])

♂ 34mm

Mera, Pastaza, Ecuador, 1100m; August 2022



AZ24-0348

Rosema zelica (Stoll, [1790])

♂ 37mm

Cab. Yankuam, Rio Nangaritza, Zamora-Chinchiipe, Ecuador, 1000m; August 2023



AZ21-0265

Rosema deolis (Cramer, [1775])

♂ 40mm

Tena, Napo, Ecuador, 650m; July 2021



AZ22-0446

Rosema deolis (Cramer, [1775])

♀ 45mm

Mera, Pastaza, Ecuador, 1100m;
August 2022



AZ22-0448

Rhogalia epigena (Stoll, 1790)

♂ 33mm

Mera, Pastaza, Ecuador, 1100m;
August 2022



AZ24-0351

Rhogalia epigena (Stoll, 1790)

♂ 33mm

Cab. Yankuam, Rio Nangaritza,
Zamora-Chinchipe, Ecuador, 1000m;
August 2023



AZ24-0346

Mosera sciritis (Druce, 1890)

♂ 42mm

Cab. Yankuam, Rio Nangaritza,
Zamora-Chinchipe, Ecuador, 1000m;
August 2023



Subfamily *Nystaleinae* Forbes, 1948

AZ24-0345

Notoplusia marchiana Schaus,
1928 ♂ 41mm

Namakuntza, Rio Nambija,
Zamora-Chinchipe, Ecuador, 1100m;
August 2023



AZ22-0341

Nystalea discalis Schaus, 1910
♂ 54mm

Chuchuvi, Esmeraldas, Ecuador,
1000m; August 2022



AZ22-0340

Strophocerus chliara Draudt,
1932 ♂ 47mm

Chuchuvi, Esmeraldas, Ecuador,
1000m; August 2022



Subfamily *Dioprinae* Walker, 1862

AZ24-0300

Scotura annulata
(Guérin-Méneville, [1844])
♂ 33mm

Cab. Yankuam, Rio Nangaritzza,
Zamora-Chinchiipe, Ecuador, 1000m;
August 2023



AZ24-0349

Oricia phryganeata (Warren,
1907) ♀ 36mm

Cab. Yankuam, Rio Nangaritzza,
Zamora-Chinchiipe, Ecuador, 1000m;
August 2023



AZ21-0570

Erbessa ovia (Druce, 1893)
♀ 49mm

Tena, Napo, Ecuador, 650m; July
2021



AZ24-0350

Xenorma pictifrons (Warren,
1907) ♀ 30mm

Cab. Yankuam, Rio Nangaritzza,
Zamora-Chinchipe, Ecuador, 1000m;
August 2023



AZ21-0021

Phaeochlaena solilucis Butler,
1878 ♂ 33mm

Mera, Pastaza, Ecuador, 1000m;
July 2021



AZ23-0495

Dioptis cf. tessmanni Hering,
1925 ♂ 35mm

Cab. Yankuam, Rio Nangaritzza,
Zamora-Chinchipe, Ecuador, 1100m;
August 2023



AZ24-0352

Monocreaga orthyades Druce,
1893 ♂ 31mm

Via Nambija, San Carlos De Las
Minas, Zamora-Chinchipe, Ecuador,
1700m; August 2023



AZ21-0024

Monocreaga pheloides Felder,
1874 ♂ 33mm

Mera, Pastaza, Ecuador, 1000m;
July 2021



AZ21-0115

Euchontha frigida (Walker,
[1865]) ♂ 32mm

El Triunfo, Pastaza, Ecuador, 600m;
July 2021



Tribe *Josini* Piepers & Snellen, 1900

AZ23-0492

Lyces aff. *eterusialis* Walker,
[1865] ♀ 40mm

Via Nambija, San Carlos De Las
Minas, Zamora-Chinchi, Ecuador,
1700m; August 2023



AZ23-0275

Lyces striata (Druce, 1885)
♂ 39mm

Rio Blanco, Banos, Tungurahua,
Ecuador, 1950m; August 2023



Notodontidae species incertae

AZ24-0343

(*Notodontidae*) ?*spec.* ♂ 40mm

Cab. Yankuam, Rio Nangaritzza,
Zamora-Chinchi, Ecuador, 1000m;
August 2023



Family *Euteliidae* Grote, 1882

Subfamily *Euteliinae* Grote, 1882

AZ24-0369

Eutelia abscondens Walker,
1858 ♂ 38mm

Cab. Yankuam, Rio Nangaritza,
Zamora-Chinchiipe, Ecuador, 1000m;
August 2023



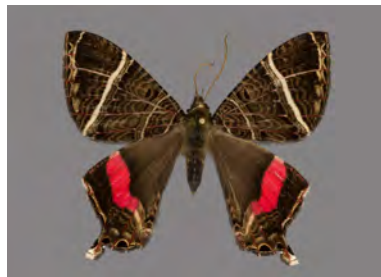
Superfamily *Geometroidea* Leach, 1815

Family *Sematuridae* Guenée, 1858

AZ24-0269

Homidiana aff. canace
(Hopffer, 1856) ♀ 55mm

Via Nambija, San Carlos De Las
Minas, Zamora-Chinchipec, Ecuador,
1700m; August 2023



AZ21-0231

Mania empedocles (Cramer,
1782) ♀ 89mm

Chuchuvi, Esmeraldas, Ecuador,
1000m; July 2021



Family *Uraniidae* Leach, 1815

Subfamily *Uraniinae* Blanchard, 1845

AZ22-0227

Urania leilus (Linnaeus, 1758)

♂ 65mm

Coca, Orellana, Ecuador, 300m;

August 2022



Subfamily *Epipleminae* Hampson, 1892

AZ24-0276

Saccoploca cf. brevimargo

Warren, 1907 ♂ 23mm

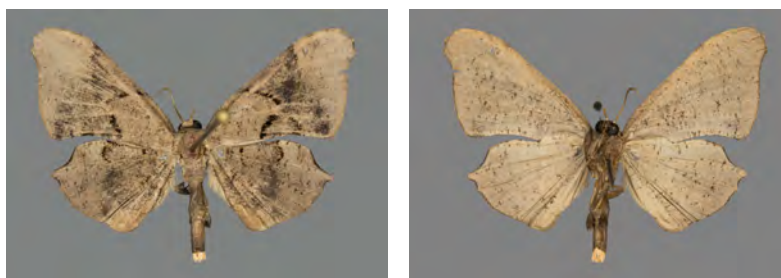
Cab. Yankuam, Rio Nangaritza,
Zamora-Chinchiipe, Ecuador, 1000m;
August 2023



AZ22-0497

Epiplema ?spec. ♂ 27mm

Mera, Pastaza, Ecuador, 1100m;
August 2022



AZ22-0492

Erosia incendiata (Guenée,
1857) ♂ 42mm

Mera, Pastaza, Ecuador, 1100m;
August 2022



Family *Geometridae* Leach, 1815

Subfamily *Geometrinae* Leach, 1815

Tribe *Nemoriini* Gumpenberg, 1887

AZ24-0222

Pyrochlora rhanis (Cramer,
[1777]) ♂ 24mm

Cab. Yankuam, Rio Nangaritza,
Zamora-Chinchi, Ecuador, 1000m;
August 2023



AZ24-0223

Pyrochlora majorcula Dyar,
1925 ♂ 25mm

Cab. Yankuam, Rio Nangaritza,
Zamora-Chinchi, Ecuador, 1000m;
August 2023



AZ22-0476

Rhodochlora endognoma Prout,
1916 ♂ 36mm

Mera, Pastaza, Ecuador, 1100m;
August 2022



AZ22-0500

Rhodochlora brunneipalpis
Warren, 1894 ♂ 36mm

Chuchuvi, Esmeraldas, Ecuador,
1000m; August 2022



AZ22-0478

Lindachlora flaccida (W. Warren 1909) ♂ 33mm

Chuchuvi, Esmeraldas, Ecuador, 1000m; August 2022



AZ24-0215

Nemoria astraea (Druce, 1892) ♂ 24mm

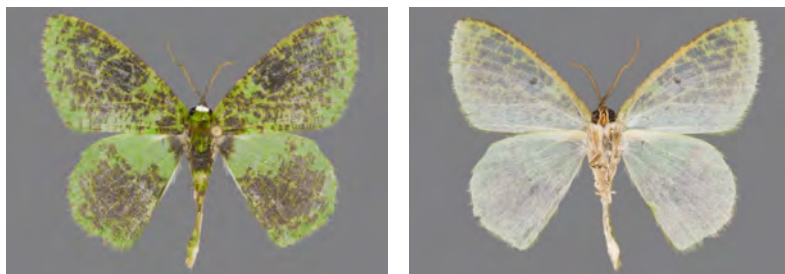
Cab. Yankuam, Rio Nangaritzza, Zamora-Chinchiipe, Ecuador, 1000m; August 2023



AZ24-0216

Nemoria hazelae Pitkin, 1993 ♂ 28mm

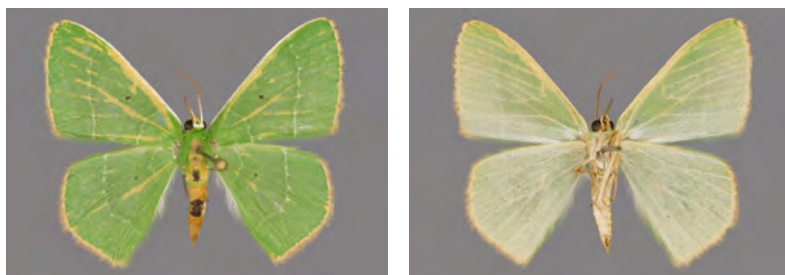
Cab. Yankuam, Rio Nangaritzza, Zamora-Chinchiipe, Ecuador, 1000m; August 2023



AZ22-0465

Nemoria cf. acutularia (Schaus, 1912) ♂ 27mm

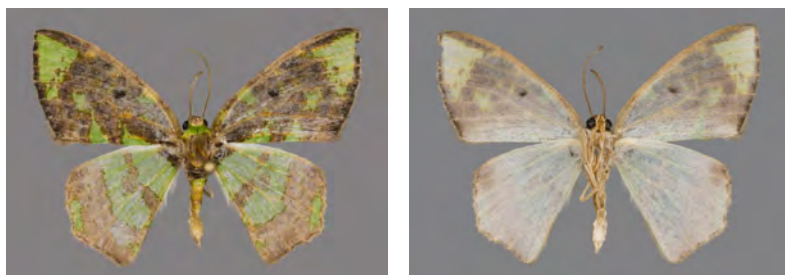
Mera, Pastaza, Ecuador, 1100m; August 2022



AZ22-0479

Nemoria oppleta (Warren, 1907) ♂ 26mm

Mera, Pastaza, Ecuador, 1100m; August 2022



AZ22-0477

Nemoria erina (Dognin, 1896) ♂ 36mm

Mera, Pastaza, Ecuador, 1100m; August 2022



AZ24-0226

Nemoria erina (Dognin, 1896)

♀ 41mm

Rd. to R. Chumberiaza, Zurmi,
Zamora-Chinchipec, Ecuador, 1600m;
August 2023



AZ22-0366

Nemoria ? adaluzae Pitkin,
1993 ♂ 24mm

Chuchuvi, Esmeraldas, Ecuador,
1000m; August 2022



AZ22-0364

Nemoria ? scriptaria (Hübner,
[1823]) ♂ 22mm

Chuchuvi, Esmeraldas, Ecuador,
1000m; August 2022



AZ22-0463

Tachychlora flavidisca (Warren,
1904) ♂ 18mm

Mera, Pastaza, Ecuador, 1100m;
August 2022



AZ22-0468

Lissochlora ? purpureotincta
(Warren, 1900) ♂ 25mm

Mera, Pastaza, Ecuador, 1100m;
August 2022



AZ24-0217

Lissochlora purpureotincta
(Warren, 1900) ♂ 21mm

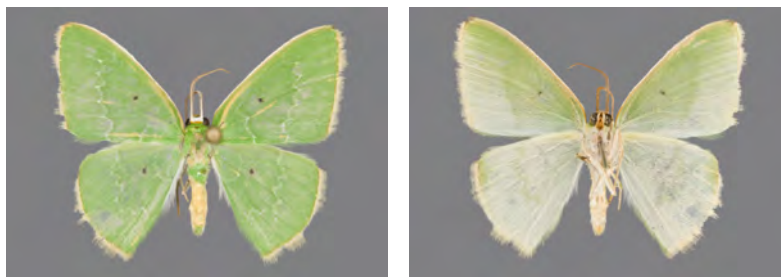
Cab. Yankuam, Rio Nangaritza,
Zamora-Chinchipec, Ecuador, 1000m;
August 2023



AZ24-0218

Lissochlora cf. vividata (Prout, 1932) ♀ 21mm

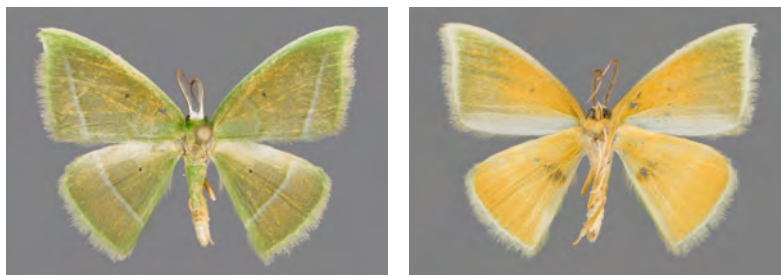
Cab. Yankuam, Rio Nangaritzza, Zamora-Chinchiipe, Ecuador, 1000m; August 2023



AZ24-0219

Phrudocentra subaurata (Warren, 1904) ♂ 22mm

Cab. Yankuam, Rio Nangaritzza, Zamora-Chinchiipe, Ecuador, 1000m; August 2023

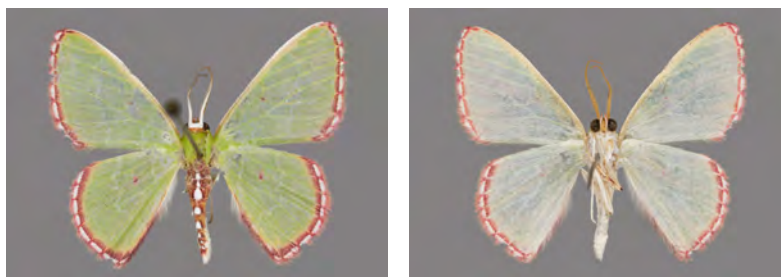


Tribe *Synchlora* Fergusson 1969

AZ22-0467

Synchlora ? pulchrifimbria (Warren, 1907) ♂ 18mm

Mera, Pastaza, Ecuador, 1100m; August 2022



AZ22-0469

Synchlora astraeoides (Warren, 1901) ♀ 19mm

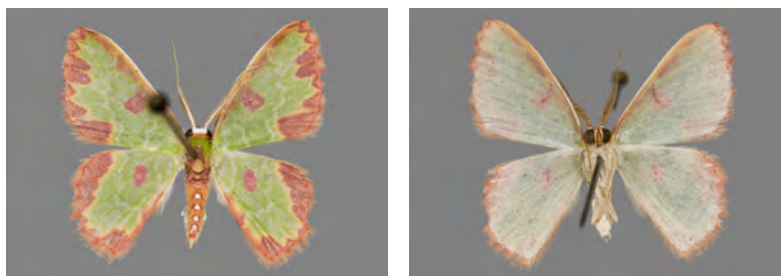
Mera, Pastaza, Ecuador, 1100m; August 2022



AZ22-0367

Synchlora decorata (Warren, 1901) ♂ 15mm

Chuchuvi, Esmeraldas, Ecuador, 1000m; August 2022



AZ22-0565

Synchlora decorata (Warren, 1901) ♂ 16mm

Mera, Pastaza, Ecuador, 1100m; August 2022



AZ24-0213

Synchlora gerularia (Hübner, [1823]) ♂ 18mm

Cab. Yankuam, Rio Nangaritzza, Zamora-Chinchiipe, Ecuador, 1000m; August 2023



Tribe *Lophochoristini* Ferguson, 1969

AZ22-0460

Oospila rufiplaga Warren, 1904 ♂ 30mm

Mera, Pastaza, Ecuador, 1100m; August 2022



AZ21-0564

Oospila albicoma (Felder, 1875) ♀ 49mm

Chuchuvi, Esmeraldas, Ecuador, 1000m; July 2021



AZ21-0565

Oospila albicoma (Felder, 1875) ♂ 36mm

Chuchuvi, Esmeraldas, Ecuador, 1000m; July 2021



AZ24-0228

Oospila albicoma (Felder, 1875) ♂ 29mm

Cab. Yankuam, Rio Nangaritzza, Zamora-Chinchiipe, Ecuador, 1000m; August 2023



AZ24-0220

Oospila athena (Druce, 1892) ♀ 33mm

Cab. Yankuam, Rio Nangaritzza, Zamora-Chinchiipe, Ecuador, 1000m; August 2023



AZ21-0209

Oospila atopochlora Prout, 1933
♂ 34mm

Tena, Napo, Ecuador, 650m; July
2021



AZ24-0225

Oospila concinna Warren, 1900
♂ 41mm

Cab. Yankuam, Rio Nangaritza,
Zamora-Chinchiipe, Ecuador, 1000m;
August 2023



AZ24-0221

Oospila lactecincta (Warren,
1909) ♂ 27mm

Cab. Yankuam, Rio Nangaritza,
Zamora-Chinchiipe, Ecuador, 1000m;
August 2023



AZ24-0224

Oospila lilacina (Warren, 1906)
♂ 34mm

Cab. Yankuam, Rio Nangaritza,
Zamora-Chinchiipe, Ecuador, 1000m;
August 2023



AZ22-0462

Oospila miccularia (Guenée,
1857) ♂ 16mm

Mera, Pastaza, Ecuador, 1100m;
August 2022



AZ22-0368

Oospila ? tricamerata Prout,
1916 ♂ 29mm

Chuchuvi, Esmeraldas, Ecuador,
1000m; August 2022



AZ22-0365

Chavarriella fallax (Warren, 1907) ♂ 25mm

Chuchuvi, Esmeraldas, Ecuador, 1000m; August 2022



AZ24-0214

Chavarriella fallax (Warren, 1907) ♂ 23mm

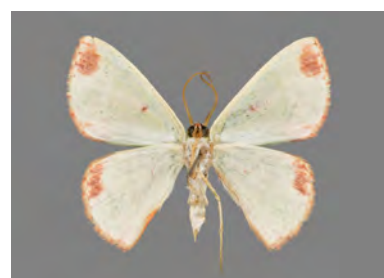
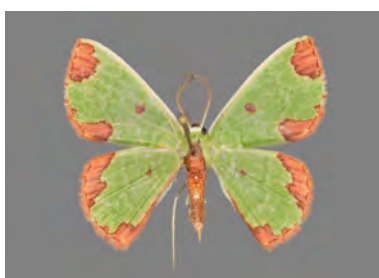
Namakuntza, Rio Nambija, Zamora-Chinchipec, Ecuador, 1100m; August 2023



AZ21-0554

Chavarriella porcius (Schaus, 1912) ♂ 25mm

Chuchuvi, Esmeraldas, Ecuador, 1000m; July 2021



AZ22-0369

Chavarriella semiornata (Warren, 1901) ♀ 29mm

Chuchuvi, Esmeraldas, Ecuador, 1000m; August 2022

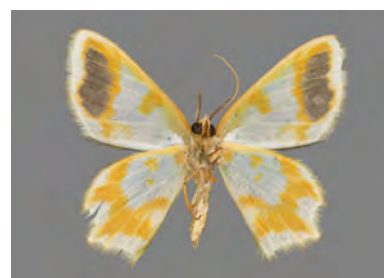


Tribe *Hemitheini* Bruand, 1846

AZ21-0551

Cathydata batina (Druce, 1892) ♂ 25mm

Chuchuvi, Esmeraldas, Ecuador, 1000m; July 2021



AZ22-0466

Cathydata batina (Druce, 1892) ♂ 23mm

Mera, Pastaza, Ecuador, 1100m; August 2022



Subfamily *Sterrhinae* Meyrick, 1892

Tribe *Cosymbiini* Prout, 1911

AZ22-0392

Cyclophora insigniata (Warren, 1900) ♂ 36mm

Chuchuvi, Esmeraldas, Ecuador, 1000m; August 2022



AZ22-0393

Semaeopus illimitata (Warren, 1900) ♂ 34mm

Chuchuvi, Esmeraldas, Ecuador, 1000m; August 2022



Tribe *Cyllopodini* Kirby, 1892

AZ22-0296

Atyria nanipennis (Warren, 1900) ♂ 34mm

P-to Misahualli, Napo, Ecuador, 550m; August 2022



AZ23-0279

Atyria cf. nanipennis (Warren, 1900) ♂ 32mm

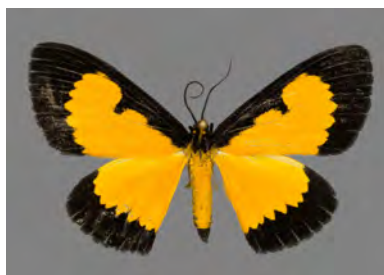
El Capricho, Napo, Ecuador, 650m; August 2023



AZ21-0562

Xanthyrus flaveolata (Linnaeus, 1758) ♂ 43mm

Tena, Napo, Ecuador, 650m; July 2021



AZ21-0553

Xanthyrus ? supergressa
Bastelberger, 1909 ♂ 37mm

Chuchuvi, Esmeraldas, Ecuador,
 1000m; July 2021



Subfamily *Larentiinae* Duponchel, 1845

Tribe *Larentiini* Duponchel 1845

AZ22-0481

Hammaptera infuscata
Herbulot, 1988 ♂ 32mm

Mera, Pastaza, Ecuador, 1100m;
 August 2022



AZ24-0253

Hammaptera aff. probataria
Herrich-Schäffer, 1855 ♂ 41mm

Cab. Yankuam, Rio Nangaritza,
 Zamora-Chinchiipe, Ecuador, 1000m;
 August 2023



Tribe *Hydriomenini* Meyrick, 1872

AZ23-0498

Erebochlora tesseralata (*Felder*
 & *Rogenhofer, 1875*) ♂ 50mm

Cab. Yankuam, Rio Nangaritza,
 Zamora-Chinchiipe, Ecuador, 1000m;
 August 2023



Tribe *Stamnodini* Forbes, 1948

AZ21-0283

Hagnagora lea (Druce, 1885)
♂ 33mm

Comunidad Apuya, Napo, Ecuador,
500m; July 2021



AZ23-0496

Heterusia cf. *unanimaria*
(Walker, 1862) ♂ 21mm

Via Nambija, San Carlos De Las
Minas, Zamora-Chinchi, Ecuador,
1200m; August 2023



Tribe *Eudulini* Warren, 1897

AZ24-0240

Graphidipus cf. *pilifera* Dognin,
1912 ♂ 40mm

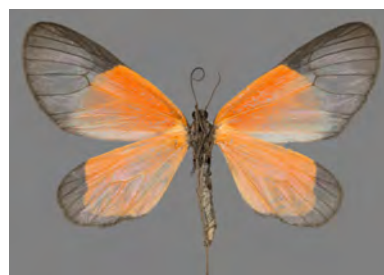
Rd. to R. Chumberiaza, Zurmi,
Zamora-Chinchi, Ecuador, 1600m;
August 2023



AZ23-0494

Eudule ficulnea (Druce 1885)
♀ 33mm

Via Nambija, San Carlos De Las
Minas, Zamora-Chinchi, Ecuador,
1800m; August 2023



AZ24-0275

Eudule ficulnea (Druce 1885)
♀ 31mm

Via Nambija, San Carlos De Las
Minas, Zamora-Chinchi, Ecuador,
1700m; August 2023



Tribe *Erateinini* Guenée, 1858

AZ23-0274

Erateina cf. *garrulata* Felder,
1875 ♂ 28mmRio Blanco, Banos, Tungurahua,
Ecuador, 1950m; August 2023

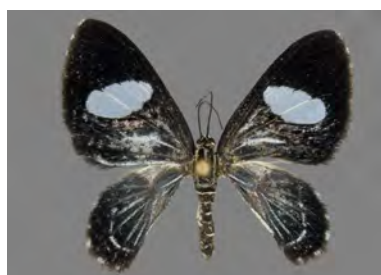
AZ23-0524

Erateina cf. *garrulata* Felder,
1875 ♂ 28mmSan Carlos De Las Minas,
Zamora-Chinchipe, Ecuador, 1800m;
August 2023

AZ23-0277

Erateina cf. *medama* (Druce,
1892) ♀ 28mmRio Blanco, Banos, Tungurahua,
Ecuador, 1950m; August 2023

AZ24-0273

Erateina cf. *radiaria*
(Herrich-Schäffer, 1853)
♂ 22mmVia Nambija, San Carlos De Las
Minas, Zamora-Chinchipe, Ecuador,
1700m; August 2023

AZ21-0552

Erateina rogersi Druce, 1893
♂ 34mmChuchuvi, Esmeraldas, Ecuador,
1000m; July 2021

AZ24-0260

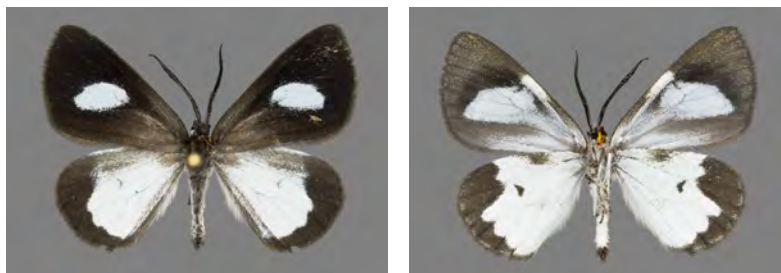
Erateina zoraida Doubleday,
1848 ♂ 26mmVia Nambija, San Carlos De Las
Minas, Zamora-Chinchipe, Ecuador,
1850m; August 2023

Subfamily *Ennominae* Duponchel, 1845

AZ23-0276

Devarodes cf. charisia (Druce, 1893) ♂ 26mm

Rio Blanco, Banos, Tungurahua, Ecuador, 1950m; August 2023



AZ23-0497

Devarodes bubona (Druce, 1885) ♂ 27mm

Rd. to R. Chumberiaza, Zurmi, Zamora-Chinchiipe, Ecuador, 1450m; August 2023



AZ22-0107

Erycinopsis diaphana Felder, 1874 ♀ 37mm

Chuchuvi, Esmeraldas, Ecuador, 1000m; August 2022



AZ22-0108

Erycinopsis diaphana Felder, 1874 ♂ 34mm

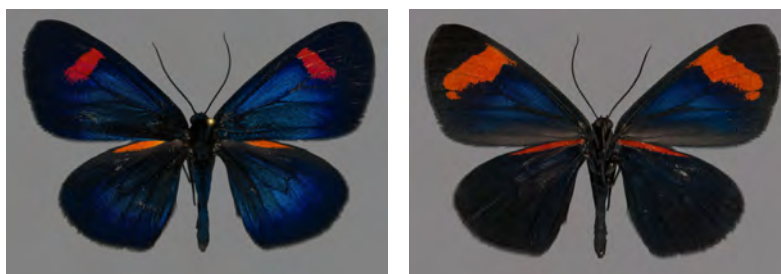
Chuchuvi, Esmeraldas, Ecuador, 1000m; August 2022



AZ21-0568

Siosta bifasciata (Latreille, 1817) ♂ 45mm

Tena, Napo, Ecuador, 650m; July 2021



AZ21-0569

Siosta bifasciata (Latreille,
1817) ♂ 45mmTena, Napo, Ecuador, 650m; July
2021

AZ23-0525

Drymoea cf. alcera (Boisduval,
1870) ♂ 38mmVia Nambija, San Carlos De Las
Minas, Zamora-Chinchiipe, Ecuador,
1400m; August 2023

AZ21-0011

Drymoea aff. caelisigna
(Walker, 1854) ♂ 32mmEl Triunfo, Pastaza, Ecuador, 600m;
July 2021

AZ21-0567

Drymoea caelisigna tomisa
(Druce, 1885) ♂ 31mmTena, Napo, Ecuador, 650m; July
2021

AZ23-0529

Drymoea hesperoides (Walker,
1854) ♂ 34mmCab. Yankuam, Rio Nangaritzza,
Zamora-Chinchiipe, Ecuador, 1000m;
August 2023

AZ23-0526

Drymoea sacrata uzisama
(Druce, 1885) ♂ 30mmSan Carlos De Las Minas,
Zamora-Chinchiipe, Ecuador, 1400m;
August 2023

AZ23-0491

Drymoea ?spec. ♂ 35mm

Cab. Yankuam, Rio Nangaritza,
Zamora-Chinchipe, Ecuador, 1000m;
August 2023



AZ23-0490

Stenele aletis (C. & R. Felder, 1862) ♂ 45mm

Cab. Yankuam, Rio Nangaritza,
Zamora-Chinchipe, Ecuador, 1000m;
August 2023



AZ24-0261

Stenele aletis (C. & R. Felder, 1862) ♀ 47mm

Rd. to R. Chumberiaza, Zurmi,
Zamora-Chinchipe, Ecuador, 1600m;
August 2023



AZ24-0257

Brachurapteryx t. tesserata (Guenée, [1858]) ♂ 44mm

Rd. to R. Chumberiaza, Zurmi,
Zamora-Chinchipe, Ecuador, 1600m;
August 2023



AZ21-0092

Pantherodes conglomerata (Warren, 1894) ♀ 41mm

Mera, Pastaza, Ecuador, 1000m;
July 2021



AZ24-0256

Pantherodes conglomerata (Warren, 1894) ♂ 36mm

Via Nambija, San Carlos De Las
Minas, Zamora-Chinchipe, Ecuador,
1700m; August 2023



AZ24-0279

Pantherodes cf. conglomerata
(Warren, 1894) ♀ 44mmVia Nambija, San Carlos De Las
Minas, Zamora-Chinchiipe, Ecuador,
1700m; August 2023

AZ21-0227

Pantherodes colubraria Guenée,
1858 ♂ 44mmChuchuvi, Esmeraldas, Ecuador,
1000m; July 2021

AZ22-0385

Pantherodes colubraria Guenée,
1858 ♀ 49mmChuchuvi, Esmeraldas, Ecuador,
1000m; August 2022Tribe *Ourapterygini* Bruand, 1846

AZ24-0262

Microsema ?spec. ♂ 31mmNamakuntza, Rio Nambija,
Zamora-Chinchiipe, Ecuador, 1100m;
August 2023

AZ24-0267

Hygrochroma olivinaria
Herrich-Schäffer, [1855] ♀ 45mmCab. Yankuam, Rio Nangaritzza,
Zamora-Chinchiipe, Ecuador, 1000m;
August 2023

AZ23-0527

Pyrinia nigrapicalis Herbulot,
1988 ♂ 17mmCab. Yankuam, Rio Nangaritzza,
Zamora-Chinchiipe, Ecuador, 1000m;
August 2023

AZ22-0361

Pyrinia itunaria Walker, 1860
♂ 22mm

Chuchuvi, Esmeraldas, Ecuador,
1000m; August 2022



AZ24-0270

Pyrinia coearia Walker, 1860
♂ 25mm

Cab. Yankuam, Rio Nangaritza,
Zamora-Chinchiipe, Ecuador, 1000m;
August 2023



AZ24-0244

Cratoptera zarumata (Oberthür,
1912) ♀ 38mm

Cab. Yankuam, Rio Nangaritza,
Zamora-Chinchiipe, Ecuador, 1000m;
August 2023



AZ24-0249

Acrosemia vulpecularia
Herrich-Schäffer, [1855]
♂ 38mm

Rd. to R. Chumberiaza, Zurmi,
Zamora-Chinchiipe, Ecuador, 1600m;
August 2023



AZ24-0248

Tmetomorpha bitias (Druce,
1892) ♂ 43mm

Namakuntza, Rio Nambija,
Zamora-Chinchiipe, Ecuador, 1100m;
August 2023



AZ24-0232

Bonatea duciata (Maassen,
1890) ♂ 61mm

Via Nambija, San Carlos De Las
Minas, Zamora-Chinchiipe, Ecuador,
1700m; August 2023



AZ22-0502

Cyphoedma transvolutata
(Walker, 1860) ♂ 38mm

Mera, Pastaza, Ecuador, 1100m;
August 2022



AZ22-0394

Acrotomia muta Druce, 1892
♂ 44mm

Chuchuvi, Esmeraldas, Ecuador,
1000m; August 2022



AZ21-0563

Phyle cf. infusca Rindge, 1990
♂ 42mm

Chuchuvi, Esmeraldas, Ecuador,
1000m; July 2021



AZ24-0265

Phyle spec. ♂ 37mm

Cab. Yankuam, Rio Nangaritzza,
Zamora-Chinchiipe, Ecuador, 1000m;
August 2023



AZ24-0264

Phyle versatile Rindge, 1990
♂ 37mm

Cab. Yankuam, Rio Nangaritzza,
Zamora-Chinchiipe, Ecuador, 1000m;
August 2023



AZ21-0099

Certima espuma (Dognin, 1896)
♂ 36mm

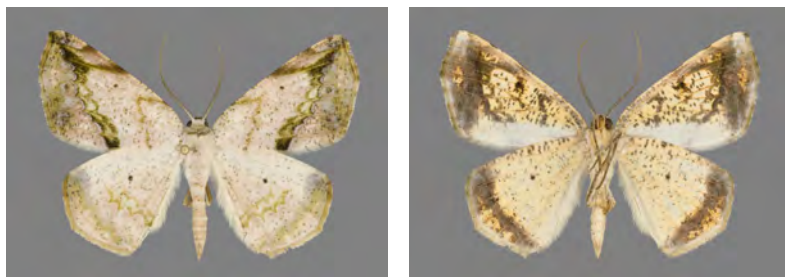
Mera, Pastaza, Ecuador, 1000m;
July 2021



AZ24-0245

Eusarca nemora catenulata
(Warren, 1904) ♂ 37mm

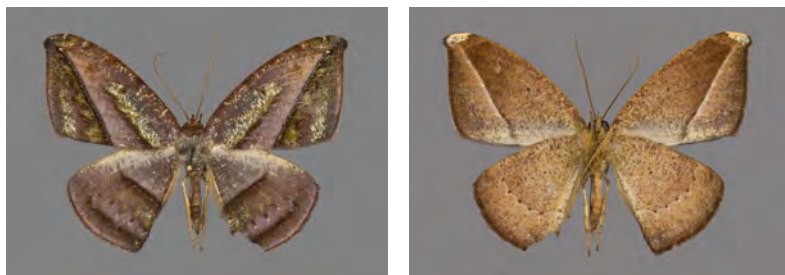
Cab. Yankuam, Rio Nangaritza,
Zamora-Chinchiipe, Ecuador, 1000m;
August 2023



AZ22-0390

Oxydia ardesia Herbulot, 1983
♂ 46mm

Chuchuvi, Esmeraldas, Ecuador,
1000m; August 2022



AZ22-0504

Oxydia augusta Druce, 1892
♂ 59mm

Mera, Pastaza, Ecuador, 1100m;
August 2022



AZ21-0070

Oxydia platypterata Guenée,
1858 ♂ 53mm

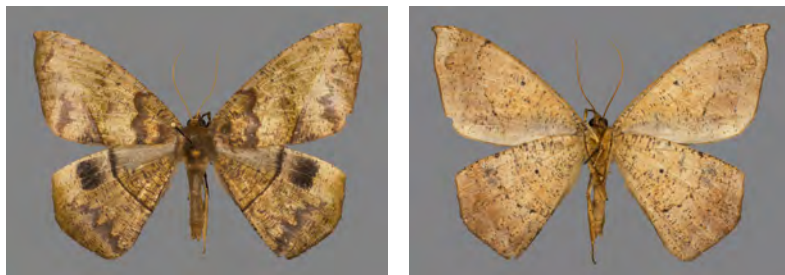
Mera, Pastaza, Ecuador, 1000m;
July 2021



AZ21-0228

Oxydia bilinea (Schaus, 1911)
♂ 73mm

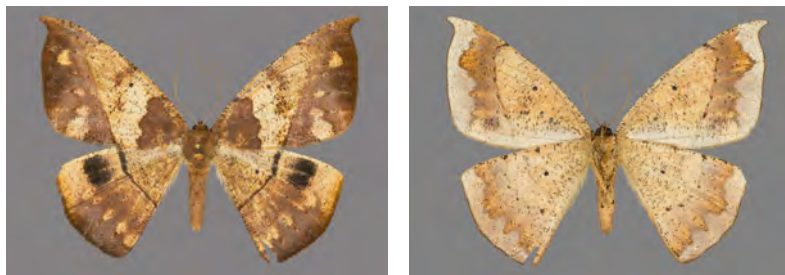
Chuchuvi, Esmeraldas, Ecuador,
1000m; July 2021



AZ22-0362

Oxydia bilinea (Schaus, 1911)
♀ 75mm

Chuchuvi, Esmeraldas, Ecuador,
1000m; August 2022



AZ24-0230

Oxydia cf. sociata (Warren,
1895) ♂ 59mm

Via Nambija, San Carlos De Las
Minas, Zamora-Chinchiipe, Ecuador,
1700m; August 2023



AZ24-0246

Prochoerodes onustaria
(Hübner, 1832) ♂ 47mm

Namakuntza, Rio Nambija,
Zamora-Chinchiipe, Ecuador, 1100m;
August 2023



AZ22-0391

Nepheloleuca cf. politia
(Cramer, [1777]) ♂ 39mm

Chuchuvi, Esmeraldas, Ecuador,
1000m; August 2022



AZ24-0258

Sericoptera mahometaria
(Herrich-Schäffer, [1853])
♂ 44mm

Rd. to R. Chumberiaza, Zurmi,
Zamora-Chinchiipe, Ecuador, 1600m;
August 2023



AZ24-0254

Sabulodes ornatissima
Thierry-Mieg, 1892 ♀ 37mm

Rd. to R. Chumberiaza, Zurmi,
Zamora-Chinchiipe, Ecuador, 1600m;
August 2023



Tribe *Cassymini* Holloway, 1994

AZ24-0271

Leuciris ?*spec.* ♀ 22mm

Cab. Yankuam, Rio Nangaritza,
Zamora-Chinchipe, Ecuador, 1000m;
August 2023

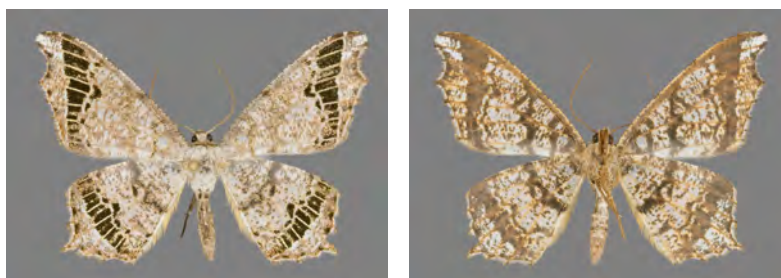


Tribe *Macariini* Guenée, 1858

AZ24-0259

Semiothisa radiata (Maassen,
1890) ♂ 32mm

Via Nambija, San Carlos De Las
Minas, Zamora-Chinchipe, Ecuador,
1700m; August 2023

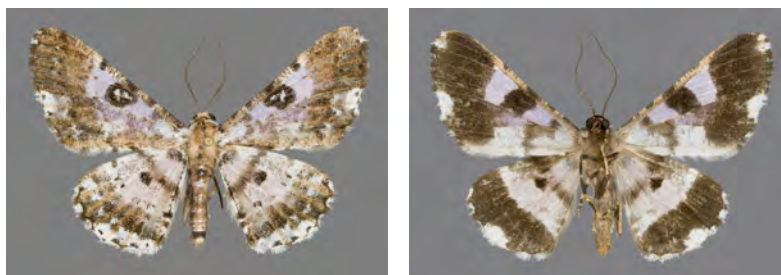


Tribe *Boarmiini* Duponchel, 1845

AZ24-0247

Iridopsis validaria (Guenée,
1858) ♂ 38mm

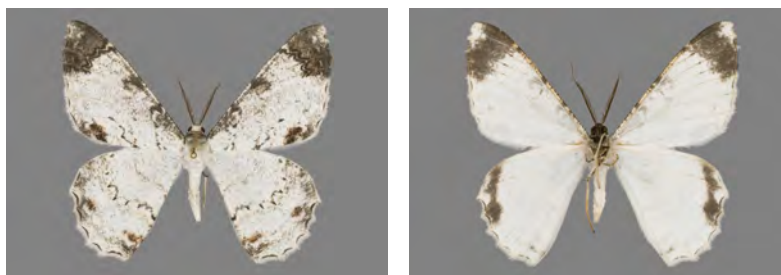
Namakuntza, Rio Nambija,
Zamora-Chinchipe, Ecuador, 1100m;
August 2023



AZ21-0067

Epimecis anonaria (Felder &
Rogenhofer, 1875) ♂ 57mm

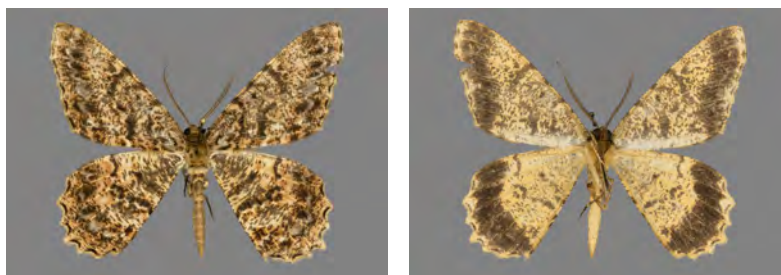
Mera, Pastaza, Ecuador, 1000m;
July 2021



AZ22-0380

Epimecis cf. *vexillata* (Felder &
Rogenhofer, 1875) ♂ 63mm

Chuchuvi, Esmeraldas, Ecuador,
1000m; August 2022



AZ21-0208

Epimecis cf. diffundaria
(Walker, 1860) ♂ 54mm

Chuchuvi, Esmeraldas, Ecuador,
1000m; July 2021



Tribe *Ennomini* Duponchel, 1845

AZ21-0223

Paragonia cruraria
(Herrich-Schäffer, 1854)
♂ 53mm

Chuchuvi, Esmeraldas, Ecuador,
1000m; July 2021



Tribe *Azelinini* Forbes, 1948

AZ24-0268

Pero isotenes Prout, 1928
♂ 37mm

Namakuntza, Rio Nambija,
Zamora-Chinchi, Ecuador, 1100m;
August 2023



AZ22-0470

Pero yahua Poole, 1987 ♂ 45mm

Mera, Pastaza, Ecuador, 1100m;
August 2022



AZ22-0483

Pero coronata (Warren, 1904)
♂ 46mm

Mera, Pastaza, Ecuador, 1100m;
August 2022



AZ22-0498

Pero saturata (Walker, 1867)
♂ 40mm

Mera, Pastaza, Ecuador, 1100m;
August 2022



Tribe *Nacophorini* Forbes, 1948

AZ22-0482

Stegotheca ?spec. ♀ 38mm

Mera, Pastaza, Ecuador, 1100m;
August 2022



AZ22-0480

Ischnopteris catocalata
(Guenée, [1858]) ♂ 36mm

Mera, Pastaza, Ecuador, 1100m;
August 2022



Tribe *Sphacelodini* Forbes, 1948

AZ24-0242

Sphacelodes cf. quadrilineata
(Warren, 1900) ♂ 46mm

Rd. to R. Chumberiaza, Zurmi,
Zamora-Chinchipe, Ecuador, 1600m;
August 2023



Tribe *Melanolophiini* Forbes 1948

AZ24-0235

Betulodes crebraria (Guenée,
1857) ♂ 65mm

Rd. to R. Chumberiaza, Zurmi,
Zamora-Chinchipe, Ecuador, 1600m;
August 2023



AZ22-0386

Melanolophia cf. venedictoffae
Herbulot, 1976 ♂ 40mm

Chuchuvi, Esmeraldas, Ecuador,
1000m; August 2022



Tribe *Nephodiini* Warren, 1894

AZ24-0238

Neuromelia sericea Warren,
1894 ♀ 44mm

Cab. Yankuam, Rio Nangaritzza,
Zamora-Chinchiipe, Ecuador, 1000m;
August 2023



AZ24-0234

Fulgurodes mayor (*Dognin,*
1893) ♀ 64mm

Via Nambija, San Carlos De Las
Minas, Zamora-Chinchiipe, Ecuador,
1700m; August 2023



AZ22-0474

Fulgurodes cf. perasata
(*Dognin, 1893*) ♂ 46mm

Mera, Pastaza, Ecuador, 1100m;
August 2022



AZ24-0239

Fulgurodes cf. perasata
(*Dognin, 1893*) ♂ 44mm

Namakuntza, Rio Nambija,
Zamora-Chinchiipe, Ecuador, 1100m;
August 2023



AZ22-0395

Nephodia clarigrisea (Warren, 1901) ♂ 36mm

Chuchuvi, Esmeraldas, Ecuador, 1000m; August 2022



AZ22-0383

Nephodia spec. ♀ 43mm

Chuchuvi, Esmeraldas, Ecuador, 1000m; August 2022



AZ22-0384

Nephodia spec. ♂ 43mm

Chuchuvi, Esmeraldas, Ecuador, 1000m; August 2022



AZ24-0251

Nephodia hija (Dognin, 1898) ♂ 34mm

Namakuntza, Rio Nambija, Zamora-Chinchipe, Ecuador, 1100m; August 2023



AZ22-0472

Carpella marginata Dognin, 1902 ♂ 49mm

Mera, Pastaza, Ecuador, 1100m; August 2022



AZ24-0233

Carpella aequidistans Thierry-Mieg, 1893 ♂ 58mm

Via Nambija, San Carlos De Las Minas, Zamora-Chinchipe, Ecuador, 1700m; August 2023



AZ21-0093

Dyschoroneura obsolescens
Warren, 1894 ♂ 42mm

Mera, Pastaza, Ecuador, 1000m;
July 2021



AZ21-0340

Hyalostenele lutescens (Butler,
1872) ♀ 53mm

Chuchuvi, Esmeraldas, Ecuador,
1000m; July 2021



AZ24-0236

Locha cf. panopae
(Thierry-Mieg, 1892) ♂ 45mm

Cab. Yankuam, Rio Nangaritza,
Zamora-Chinchipec, Ecuador, 1000m;
August 2023



AZ24-0237

Locha panopae (Thierry-Mieg,
1892) ♀ 48mm

Cab. Yankuam, Rio Nangaritza,
Zamora-Chinchipec, Ecuador, 1000m;
August 2023



AZ21-0558

Perigramma famulata (Felder &
Rogenhofer, 1875) ♂ 37mm

Tena, Napo, Ecuador, 650m; July
2021



AZ22-0471

Perigramma famulata (Felder &
Rogenhofer, 1875) ♂ 42mm

Mera, Pastaza, Ecuador, 1100m;
August 2022



Tribe *Palyadini* Guenée, 1858

AZ21-0013

Argyrotome arcuata Debauche,
1937 ♀ 29mmMera, Pastaza, Ecuador, 1000m;
July 2021

AZ24-0252

Argyrotome t. tenebrosa
Warren, 1897 ♂ 33mmCab. Yankuam, Rio Nangaritza,
Zamora-Chinchiipe, Ecuador, 1000m;
August 2023

AZ22-0503

Opisthoxia laticlava Warren,
1904 ♂ 37mmMera, Pastaza, Ecuador, 1100m;
August 2022

AZ21-0091

Opisthoxia claudiaris Schaus,
1901 ♂ 30mmMera, Pastaza, Ecuador, 1000m;
July 2021

AZ21-0566

Opisthoxia saturniaria
(Herrich-Schäffer, [1855])
♂ 38mmChuchuvi, Esmeraldas, Ecuador,
1000m; July 2021

AZ22-0360

Opisthoxia saturniaria
(Herrich-Schäffer, [1855])
♀ 42mmChuchuvi, Esmeraldas, Ecuador,
1000m; August 2022

Ennominae species incertae

AZ24-0241

(*Ennominae*) ?*spec.* ♂ 49mm

Rd. to R. Chumberiaza, Zurmi,
Zamora-Chinchi, Ecuador, 1600m;
August 2023



Superfamily *Sesioidea* Boisduval, 1828

Family *Castniidae* Boisduval, 1828

Subfamily *Castniinae* Houlbert, 1918

AZ22-0165

Telechin licus talboti (Lathy,
1922) ♂ 77mm

El Capricho, Napo, Ecuador, 650m;
August 2022



AZ22-0146

Zegara p. personata (Walker,
[1865]) ♀ 79mm

Chuchuvi, Esmeraldas, Ecuador,
1000m; August 2022



Superfamily *Lasiocampoidea* Harris, 1841

Family *Lasiocampidae* Harris, 1841

Subfamily *Macromphaliinae* Franclemont, 1973

AZ24-0311

Tolytia sanguilenta (Dognin,
1916) ♀ 32mm

Cab. Yankuam, Rio Nangaritza,
Zamora-Chinchiipe, Ecuador, 1000m;
August 2023



AZ24-0328

Euglyphis cf. gibeae (Druce,
1899) ♂ 35mm

Cab. Yankuam, Rio Nangaritza,
Zamora-Chinchiipe, Ecuador, 1000m;
August 2023



AZ24-0330

Euglyphis gibeae (Druce, 1899)
♀ 41mm

Cab. Yankuam, Rio Nangaritza,
Zamora-Chinchiipe, Ecuador, 1000m;
August 2023



AZ24-0327*Euglyphis cf. rundala* (Schaus, 1905) ♂ 33mm

Cab. Yankuam, Rio Nangaritzza, Zamora-Chinchiipe, Ecuador, 1000m; August 2023

**AZ24-0329***Euglyphis aleria* (Druce, 1890) ♀ 38mm

Cab. Yankuam, Rio Nangaritzza, Zamora-Chinchiipe, Ecuador, 1000m; August 2023

**AZ22-0346***Euglyphis lascorina* Schaus, 1936 ♂ 42mm

Chuchuvi, Esmeraldas, Ecuador, 1000m; August 2022

**AZ21-0236***Euglyphis claudia* (Stoll, [1782]) ♂ 48mm

Tena, Napo, Ecuador, 650m; July 2021

**AZ24-0326***Euglyphis claudia* (Stoll, [1782]) ♂ 48mm

Cab. Yankuam, Rio Nangaritzza, Zamora-Chinchiipe, Ecuador, 1000m; August 2023

**AZ24-0310***Euglyphis vitripuncta* (Schaus, 1896) ♂ 26mm

Cab. Yankuam, Rio Nangaritzza, Zamora-Chinchiipe, Ecuador, 1000m; August 2023



AZ22-0491

Artace cribrarius (Ljungh,
1825) ♀ 56mm

P-to Misahualli, Napo, Ecuador,
550m; August 2022



Subfamily *Lasiocampinae* Harris 1841

AZ21-0232

Prorifrons hoppi Draudt, 1927
♂ 74mm

Chuchuvi, Esmeraldas, Ecuador,
1000m; July 2021



AZ22-0334

Prorifrons hoppi Draudt, 1927
♀ 92mm

Chuchuvi, Esmeraldas, Ecuador,
1000m; August 2022



Superfamily *Zygaenoidea* Latreille, 1809

Family *Megalopygidae* Herrich-Schäffer, 1855

Subfamily *Megalopyginae* Hopp, 1934

AZ21-0248

Podalia fuscescens Walker, 1856
♂ 76mm

Tena, Napo, Ecuador, 650m; July
2021



AZ21-0243

Podalia gamelia (Druce, 1904)
♂ 38mm

Chuchuvi, Esmeraldas, Ecuador,
1000m; July 2021



AZ21-0247

Podalia orsilochus (Cramer,
1775) ♂ 71mm

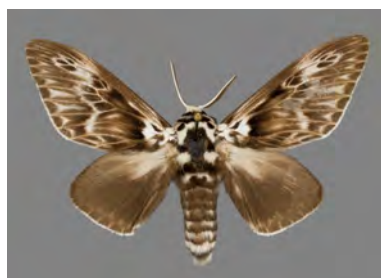
Chuchuvi, Esmeraldas, Ecuador,
1000m; July 2021



AZ21-0250

Podalia orsilochus (Cramer,
1775) ♂ 62mm

Chuchuvi, Esmeraldas, Ecuador,
1000m; July 2021



AZ24-0308

Podalia tympania (Druce, 1897)
♂ 31mm

Namakuntza, Rio Nambija,
Zamora-Chinchipe, Ecuador, 1100m;
August 2023



AZ22-0343

Megalopyge albicollis (Walker, 1855) ♂ 38mm

Chuchuvi, Esmeraldas, Ecuador,
1000m; August 2022



AZ22-0459

Megalopyge hina (Dognin, 1911)
♂ 25mm

Mera, Pastaza, Ecuador, 1100m;
August 2022



AZ24-0318

Megalopyge lecca (Druce, 1890)
♂ 38mm

Namakuntza, Rio Nambija,
Zamora-Chinchipe, Ecuador, 1100m;
August 2023



AZ24-0320

Megalopyge tharops (Stoll, 1782) ♀ 60mm

Cab. Yankuam, Rio Nangaritza,
Zamora-Chinchipe, Ecuador, 1000m;
August 2023



Subfamily *Trosiinae* Hopp, 1934

AZ22-0397

Aithorape roseicornis (Dognin,
1899) ♂ 28mm

Chuchuvi, Esmeraldas, Ecuador,
1000m; August 2022



AZ21-0580

Trosia nigropunctigera (D. S.
Fletcher, 1982) ♂ 35mm

Chuchuvi, Esmeraldas, Ecuador,
1000m; July 2021



AZ21-0244

Trosia semirufa (Druce, 1906)
♂ 37mm

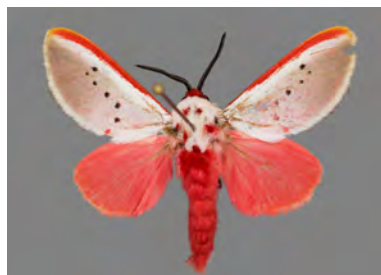
Chuchuvi, Esmeraldas, Ecuador,
1000m; July 2021



AZ21-0245

Trosia semirufa (Druce, 1906)
♂ 36mm

Tena, Napo, Ecuador, 650m; July
2021



AZ24-0322

Trosia semirufa (Druce, 1906)
♀ 51mm

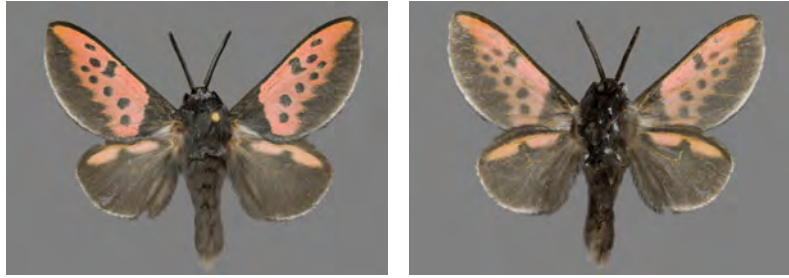
Namakuntza, Rio Nambija,
Zamora-Chinchipec, Ecuador, 1100m;
August 2023



AZ24-0313

Edebessa onorei Becker, 2022
♂ 35mm

Via Nambija, San Carlos De Las
Minas, Zamora-Chinchiipe, Ecuador,
1700m; August 2023



AZ24-0314

Macara alydda (Druce, 1887)
♂ 39mm

Via Nambija, San Carlos De Las
Minas, Zamora-Chinchiipe, Ecuador,
1700m; August 2023



AZ24-0315

Macara argentea (Druce, 1897)
♂ 34mm

Cab. Yankuam, Rio Nangaritzza,
Zamora-Chinchiipe, Ecuador, 1000m;
August 2023



Megalopygidae species incertae

AZ24-0339

(*Megalopygidae*) ?*spec.* ♀ 31mm

Cab. Yankuam, Rio Nangaritzza,
Zamora-Chinchiipe, Ecuador, 1000m;
August 2023



Family *Dalceridae* Dyar, 1898

AZ24-0323

Acraga moorei Dyar, 1898

♀ 43mm

Via Nambija, San Carlos De Las
Minas, Zamora-Chinchipec, Ecuador,
1700m; August 2023



Family *Limacodidae* Duponchel, 1845

Subfamily *Limacodinae* Duponchel, 1845

AZ21-0578

Miresa clarissa (Stoll, 1790)
♂ 25mm

Chuchuvi, Esmeraldas, Ecuador,
1000m; July 2021



Subfamily *Chrysopolominae* Aurivillius, 1895

AZ21-0259

Acharia cf. hyperoche (Dognin,
1914) ♂ 35mm

Chuchuvi, Esmeraldas, Ecuador,
1000m; July 2021



Limacodidae species incertae

AZ24-0309

(*Limacodidae*) ?spec. ♂ 26mm

Cab. Yankuam, Rio Nangaritza,
Zamora-Chinchiipe, Ecuador, 1000m;
August 2023



Superfamily *Cossoidea* Leach, 1815

Family *Cossidae* Leach, 1815

Subfamily *Zeuzerinae* Boisduval, 1828

AZ22-0439

Morpheis xylotribus
(Herrich-Schäffer, 1853)

♂ 103mm

Mera, Pastaza, Ecuador, 1100m;
August 2022



AZ24-0325

Morpheis mathani (Schaus,
1901) ♂ 80mm

Cab. Yankuam, Rio Nangaritza,
Zamora-Chinchipec, Ecuador, 1000m;
August 2023



Subfamily *Hypoptinae* Neumoegen & Dyar, 1894

AZ21-0264

Langsdorfia franckii Hübner,
[1821] ♂ 51mm

Chuchuvi, Esmeraldas, Ecuador,
1000m; July 2021



AZ21-0266

Langsdorfia ? franckii Hübner,
[1821] ♂ 52mm

Chuchuvi, Esmeraldas, Ecuador,
1000m; July 2021



AZ22-0382

Dolecta aroa (Schaus, 1894)
♂ 46mm

Chuchuvi, Esmeraldas, Ecuador,
1000m; August 2022



Superfamily *Pyraloidea* Latreille, 1809

Family *Pyralidae* Latreille, 1809

Subfamily *Epipaschiinae* Meyrick, 1884

Epipaschiinae species incertae

AZ24-0299

(*Epipaschiinae*) ?spec. ♂ 33mm

Rd. to R. Chumberiaza, Zurmi,
Zamora-Chinchipec, Ecuador, 1600m;
August 2023



Subfamily *Pyralinae* Latreille, 1809

AZ21-0576

Mapeta xanthomelas Walker,
1863 ♀ 32mm

Chuchuvi, Esmeraldas, Ecuador,
1000m; July 2021



AZ21-0577

Mapeta xanthomelas Walker,
1863 ♂ 42mm

Chuchuvi, Esmeraldas, Ecuador,
1000m; July 2021



Subfamily *Epipaschiinae* Meyrick, 1884

AZ24-0292

Milgithea ?spec. ♂ 33mm

Rd. to R. Chumberiaza, Zurmi,
Zamora-Chinchiipe, Ecuador, 1600m;
August 2023



Family *Crambidae* Latreille, 1810

Subfamily *Crambinae* Latreille, 1810

Tribe *Chiloini* Heinemann, 1865

AZ21-0217

Myelobia smerintha (Hübner,
1821) ♂ 95mm

Chuchuvi, Esmeraldas, Ecuador,
1000m; July 2021



Subfamily *Spilomelinae* Guenée, 1854

AZ24-0291

Piletosoma ?spec. ♂ 40mm

Namakuntza, Rio Nambija,
Zamora-Chinchiipe, Ecuador, 1100m;
August 2023



Tribe *Agroterini* Acloque, 1897

AZ22-0399

Phostria dohrnii (Snellen,
1881) ♀ 39mm

Chuchuvi, Esmeraldas, Ecuador,
1000m; August 2022



AZ22-0442

Phostria dohrnii (Snellen,
1881) ♂ 42mm

P-to Misahualli, Napo, Ecuador,
550m; August 2022



AZ24-0287

Pantographa expansalis
(Lederer, 1863) ♂ 33mm

Via Nambija, San Carlos De Las
Minas, Zamora-Chinchipe, Ecuador,
1700m; August 2023



Tribe *Spilomelini* Guenée, 1854

AZ22-0444

Salbia cf. lotanalis Druce, 1899
♂ 26mm

Mera, Pastaza, Ecuador, 1100m;
August 2022

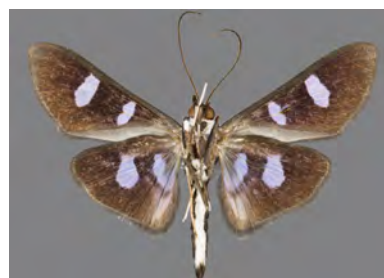


Tribe *Nomophilini* Kuznetsov & Stekolnikov, 1979

AZ21-0098

Desmia spec. ♂ 30mm

Mera, Pastaza, Ecuador, 1000m;
July 2021



AZ24-0297

Desmia spec. ♂ 31mm

Namakuntza, Rio Nambija,
Zamora-Chinchipe, Ecuador, 1100m;
August 2023



AZ22-0398

Mimophobetron pyropsalis
(Hampson, 1904) ♂ 29mm

Chuchuvi, Esmeraldas, Ecuador,
1000m; August 2022



Tribe *Udeini* Mally, Hayden, Neinhuis, Jordal & Nuss, 2019

AZ24-0290

Conchylodes nolckenialis
(Snellen, 1875) ♀ 41mm

Namakuntza, Rio Nambija,
Zamora-Chinchiipe, Ecuador, 1100m;
August 2023

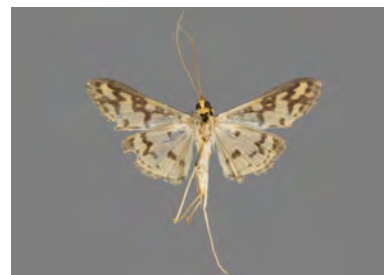
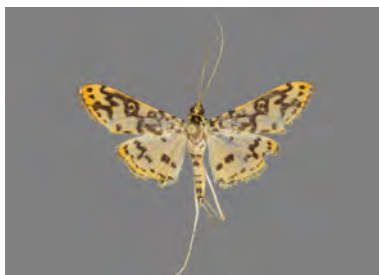


Tribe *Margaroniini* Swinhoe & Cotes, 1889

AZ24-0304

Asturodes bioalfae Solis, 2020
♂ 22mm

Cab. Yankuam, Rio Nangaritzza,
Zamora-Chinchiipe, Ecuador, 1000m;
August 2023



AZ24-0295

Glyphodes extorris Dognin,
1905 ♂ 28mm

Via Nambija, San Carlos De Las
Minas, Zamora-Chinchiipe, Ecuador,
1700m; August 2023



AZ24-0303

Glyphodes grandisalis Druce,
1902 ♂ 28mm

Cab. Yankuam, Rio Nangaritzza,
Zamora-Chinchiipe, Ecuador, 1000m;
August 2023

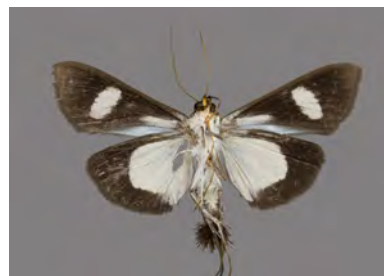


AZ22-0177*Diaphania eumeusalis* (Walker, 1859) ♂ 27mm

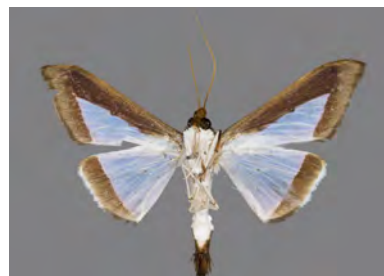
P-to Misahualli, Napo, Ecuador, 550m; August 2022

**AZ24-0298***Diaphania ?spec.* ♂ 35mm

Cab. Yankuam, Rio Nangaritzza, Zamora-Chinchiipe, Ecuador, 1000m; August 2023

**AZ22-0443***Diaphania guenealis* (Snellen) ♂ 31mm

Mera, Pastaza, Ecuador, 1100m; August 2022

**AZ21-0258***Omiodes croceiceps* (Walker, 1866) ♂ 31mm

Tena, Napo, Ecuador, 650m; July 2021

**AZ22-0176***Prenesta cf. scyllalis* (Walker, 1859) ♀ 25mm

P-to Misahualli, Napo, Ecuador, 550m; August 2022

**AZ24-0286***Azochis cf. gripusalis* Walker, 1859 ♂ 43mm

Cab. Yankuam, Rio Nangaritzza, Zamora-Chinchiipe, Ecuador, 1000m; August 2023



AZ24-0296

Azochis gripusalis Walker, 1859
♀ 39mm

Cab. Yankuam, Rio Nangaritza,
Zamora-Chinchipe, Ecuador, 1000m;
August 2023



AZ22-0440

Polygrammodes cf. ponderalis
(Guenée, 1854) ♀ 42mm

Mera, Pastaza, Ecuador, 1100m;
August 2022



AZ22-0441

Polygrammodes cf. ponderalis
(Guenée, 1854) ♂ 33mm

Mera, Pastaza, Ecuador, 1100m;
August 2022



AZ24-0288

Polygrammodes aff. ponderalis
(Guenée, 1854) ♀ 42mm

Cab. Yankuam, Rio Nangaritza,
Zamora-Chinchipe, Ecuador, 1000m;
August 2023



AZ24-0293

Polygrammodes ponderalis
(Guenée, 1854) ♂ 43mm

Namakuntza, Rio Nambija,
Zamora-Chinchipe, Ecuador, 1100m;
August 2023

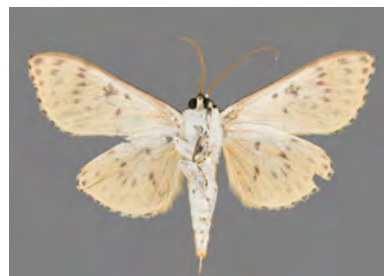


AZ24-0305

Polygrammodes elevata
(Fabricius, 1777) ♀ 28mm

Cab. Yankuam, Rio Nangaritza,
Zamora-Chinchipe, Ecuador, 1000m;
August 2023



AZ22-0419*Polygrammodes* ?*spec.* ♀ 43mmMera, Pastaza, Ecuador, 1100m;
August 2022**AZ24-0302***Polygrammodes* ?*spec.* ♂ 42mmNamakuntza, Rio Nambija,
Zamora-Chinchiipe, Ecuador, 1100m;
August 2023**AZ24-0294***Polygrammodes maccalis*
(*Lederer, 1863*) ♀ 44mmRd. to R. Chumberiaza, Zurmi,
Zamora-Chinchiipe, Ecuador, 1600m;
August 2023**AZ24-0301***Polygrammodes maccalis*
(*Lederer, 1863*) ♂ 43mmCab. Yankuam, Rio Nangaritza,
Zamora-Chinchiipe, Ecuador, 1000m;
August 2023**AZ24-0289***Anarmodia cf. arcadiusalis*
Schaus, 1924 ♂ 46mmVia Nambija, San Carlos De Las
Minas, Zamora-Chinchiipe, Ecuador,
1700m; August 2023

Subfamily *Midilinae* Munroe, 1958

Tribe *Midilini* Munroe, 1958

AZ22-0387

Midila daphne (Druce, 1895)

♂ 50mm

Chuchuvi, Esmeraldas, Ecuador,
1000m; August 2022

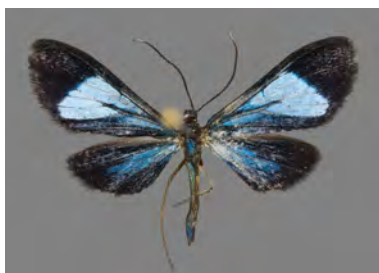


Crambidae species incertae

AZ21-0280

(*Crambidae*) ?*spec.* ♂ 22mm

Comunidad Apuya, Napo, Ecuador,
500m; July 2021



AZ24-0306

(*Crambidae*) ?*spec.* ♂ 24mm

Rd. to R. Chumberiaza, Zurmi,
Zamora-Chinchiipe, Ecuador, 1600m;
August 2023



Superfamily *Thyridoidea* Herrich-Schaeffer
1846

Family *Thyrididae* Herrich-Schäffer, 1846

Subfamily *Thyridinae* Herrich-Schäffer, 1846

AZ22-0356

Dysodia nipsa Druce, 1889
♂ 28mm

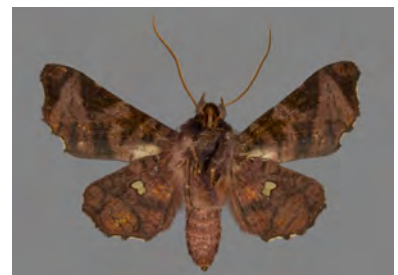
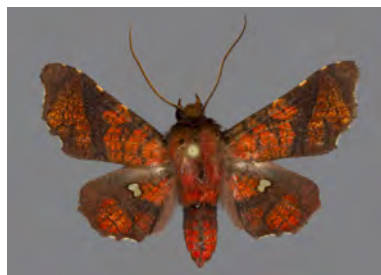
Chuchuvi, Esmeraldas, Ecuador,
1000m; August 2022



AZ24-0307

Dysodia cf. confusata Warren,
1908 ♀ 27mm

Via Nambija, San Carlos De Las
Minas, Zamora-Chinchipec, Ecuador,
1700m; August 2023



Subfamily *Siculodinae* Meyrick, 1884

AZ24-0319

Belonoptera reticula (Guenée,
1858) ♂ 61mm

Cab. Yankuam, Rio Nangaritza,
Zamora-Chinchi, Ecuador, 1000m;
August 2023



Superfamily *Mimallonoidea* Burmeister, 1878

Family *Mimallonidae* Burmeister, 1878

Subfamily *Lacosominae* Dyar, 1893

Tribe *Trogopterini* St Laurent & Kawahara, 2018

AZ24-0389

Trogoptera semililacea (Dognin,
1916) ♂ 34mm

Cab. Yankuam, Rio Nangaritza,
Zamora-Chinchipec, Ecuador, 1000m;
August 2023



Tribe *Alheitini* St Laurent & Kawahara, 2018

AZ24-0377

Thaelia subrubiginosa (Dognin,
1916) ♂ 40mm

Rd. to R. Chumberiaza, Zurmi,
Zamora-Chinchipec, Ecuador, 1600m;
August 2023



Subfamily *Druenticinae* St Laurent & Kawahara, 2018

Tribe *Druenticini* St Laurent & Kawahara, 2018

AZ24-0317

Druentica inscita (Schaus, 1890) ♂ 36mm

Namakuntza, Rio Nambija,
Zamora-Chinchipec, Ecuador, 1100m;
August 2023



Subfamily *Cicinninae* Schaus, 1912

Tribe *Cicinnini* Schaus, 1912

AZ22-0437

Cicinnus fogia Schaus, 1905
♂ 52mm

Mera, Pastaza, Ecuador, 1100m;
August 2022



AZ22-0336

Cicinnus cf. unalca Schaus,
1905 ♂ 58mm

Chuchuvi, Esmeraldas, Ecuador,
1000m; August 2022



AZ22-0381

Cicinnus cf. malca Schaus,
1905 ♂ 43mm

Chuchuvi, Esmeraldas, Ecuador,
1000m; August 2022



AZ22-0336

Cicinnus cf. unalca Schaus,
1905 ♂ 58mm

Chuchuvi, Esmeraldas, Ecuador,
1000m; August 2022



Tribe *Bedosiini* St Laurent & Kawahara, 2018

AZ22-0344

Bedosia itamaraty (Foetterle,
1902) ♂ 52mm

Chuchuvi, Esmeraldas, Ecuador,
1000m; August 2022



AZ21-0579

Bedosia trailii (Butler, 1878)
♂ 48mm

Chuchuvi, Esmeraldas, Ecuador,
1000m; July 2021



Superfamily *Hepialoidea* Stephens, 1829

Family *Hepialidae* Stephens, 1828

AZ24-0321

Gymelloxes trilinearis (Pfitzner,
1914) ♂ 48mm

Cab. Yankuam, Rio Nangaritza,
Zamora-Chinchi, Ecuador, 1000m;
August 2023



AZ24-0324

Gymelloxes trilinearis (Pfitzner,
1914) ♂ 60mm

Cab. Yankuam, Rio Nangaritza,
Zamora-Chinchi, Ecuador, 1000m;
August 2023



