

Ecuador 2021 – 2023

Vol. 2: *Erebidae*

Andrey Zheludev¹ & Oliverio Velastegui



¹Prof. Dr., Department of Physics, Swiss Federal Institute of Technology Zurich (ETHZ), Otto-Ster-Weg 1, 8093 Zürich, Switzerland; zhelud@ethz.ch; <https://neutron.ethz.ch/>.



Contents

1	Introduction	3
2	Superfamily <i>Noctuoidea</i> Latreille, 1809	7
2.1	Family <i>Erebidae</i> Leach, 1815	7
2.1.1	Subfamily <i>Lymantriinae</i> Hampson, 1893	7
	Tribe <i>Lymantriini</i> Hampson, 1893	7
	<i>Lymantriinae species incertae</i>	8
2.1.2	Subfamily <i>Hypocalinae</i> Guenée, 1852	9
2.1.3	Subfamily <i>Eulepidotinae</i> Grote, 1895	9
	Tribe <i>Eulepidotini</i> Grote, 1895	9
	Tribe <i>Panopodini</i> Forbes, 1954	10
2.1.4	Subfamily <i>Calpinae</i> Boisduval, 1840	11
	Tribe <i>Calpini</i> Boisduval, 1840	11
	Tribe <i>Ophiderini</i> Guenée, 1852	12
2.1.5	Subfamily <i>Erebinae</i> Leach, [1815]	13
	Tribe <i>Thermesiini</i> Guenée, 1852	13
	Tribe <i>Ophiusini</i> Guenée, 1837	14
	Tribe <i>Melipotini</i> Grote, 1895	14
	Tribe <i>Catocalini</i> Boisduval, [1828]	14
	<i>Erebinae species incertae</i>	15
2.1.6	Subfamily <i>Arctiinae</i> Leach, [1815]	15
	Tribe <i>Arctiini</i> Leach, 1815	15
	Subtribe <i>Ctenuchina</i> W. Kirby, 1837	15
	Subtribe <i>Euchromiina</i> Butler, 1876	30
	Subtribe <i>Phaegopterina</i> Kirby, 1892	49
	Subtribe <i>Pericopina</i> Walker, 1869	83
	Subtribe <i>Spilosomina</i> Kirby, 1892	89
	Tribe <i>Lithosiini</i> Billberg, 1820	90
	Subtribe <i>Cisthenina</i> Bendib & Minet, 1999	92
	Subtribe <i>Lithosiina</i> Billberg, 1820	93
2.1.7	<i>Erebidae species incertae</i>	94

Introduction

This is the 2nd volume of a field report on three 10-day collecting trips in Ecuador, 2021-2023. The expeditions were organized and guided by Mr. Oliverio Velastegui. This volume covers the *Erebidae*, of which the vast majority are in *Arctiinae*. All specimens except a few day-flying *Phaio* were taken using standard white-sheet-and-mercury-vapour-light traps. These were installed in the following areas (see map below):

- near the village of Chuchuvi on the border of Esmeraldas and Imbabura provinces (Rio Mira), at about 1000m elevation on the Western slopes of the Andes close to the Colombian border;
- near the townships of Tena and Puerto Misahuali, Napo province, at the confluence of Rio Napo and Rio Misahuali, around 600-700 m elevation in the Napo/Amazon basin;
- in the lower Rio Pastazza valley, in Oliverio's home town of Mera, at 1100m elevation;
- in the South-East, close to the Peruvian border on Rio Nangaritza and Rio Nambija, tributaries of Rio Zamora, in Zamora-Chinchipe province, at several locations between 1000m and 1700m elevation.



Camp and light trap on the dirt road to Nambija mine, at about about 1700m elevation in Zamora-Chinchipe. Oliverio set up the sheet like a tent. It worked well enough, but having to climb inside the tent to get to those insect that made their way in was a real pain for my knees.

The specimen photos were all taken with a Nikon D750 and either a 40 mm f/2.8 Micro-Nikkor or a 105 mm f/2.8 Sigma DG OS HSM lenses or with a Nikon Z-50 with a Z24-70 f/4 S lens with extension rings. A few specimens were also shot with a Z 105/2.8 S lens. Images of the smaller butterflies were obtained using focus- stacking. Illumination was in all cases provided by a 24 cm LED ring lite suspended about 15 cm above the subject.

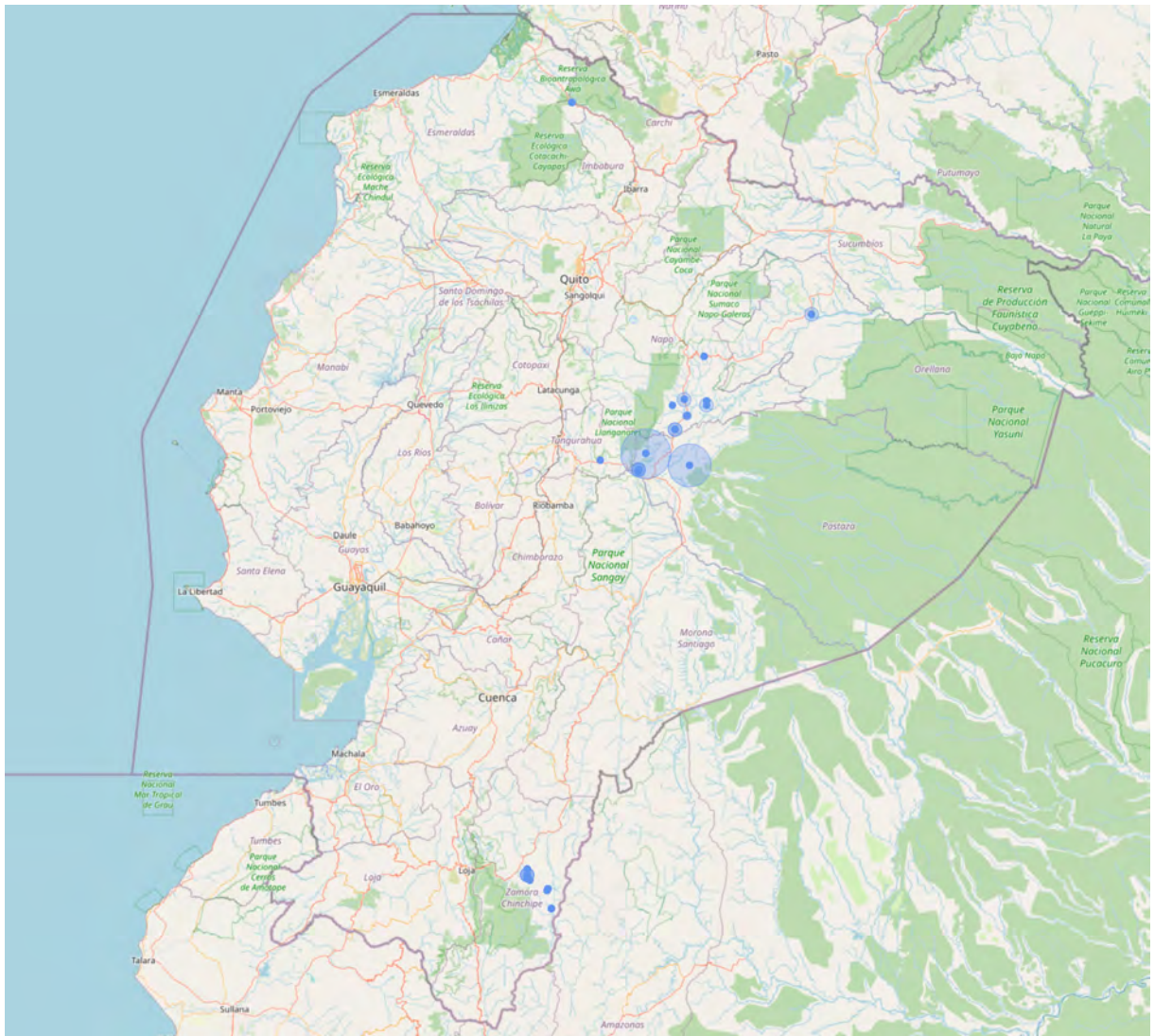


Left: A traditional flat-sheet setup on the road from Zurmi to the pass to Rio Chumberiaza valley worked at least as well. Right: Some insects need to be stacked to fit! Both pictures are from about 1600m elevation in Zamora-Chinchipe.

All specimens shown are part of the Andrey Zheludev World Lepidoptera section of the Eidgenössische Technische Hochschule Zürich insect collection.

A. Zheludev, September 3, 2024.

Collecting sites



Superfamily *Noctuoidea* Latreille, 1809

Family *Erebidae* Leach, 1815

Subfamily *Lymantriinae* Hampson, 1893

Tribe *Lymantriini* Hampson, 1893

AZ24-0333

Desmoloma styracis Felder,
1874 ♂ 51mm

Rd. to R. Chumberiaza, Zurmi,
Zamora-Chinchipec, Ecuador, 1600m;
August 2023



AZ21-0260

Caviria ?spec. ♂ 40mm

Tena, Napo, Ecuador, 650m; July
2021



AZ24-0357

Caviria spec. ♀ 36mm

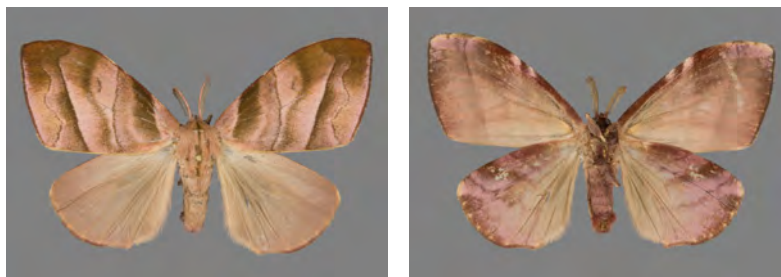
Cab. Yankuam, Rio Nangaritzza,
Zamora-Chinchipec, Ecuador, 1000m;
August 2023



AZ24-0394

Sarsina cf. festiva (Schaus, 1912) ♀ 46mm

Cab. Yankuam, Rio Nangaritza, Zamora-Chinchipe, Ecuador, 1000m; August 2023



AZ21-0110

Thagona crassilinea (Dognin, 1923) ♀ 50mm

Mera, Pastaza, Ecuador, 1000m; July 2021



AZ24-0356

Thagona crassilinea (Dognin, 1923) ♂ 43mm

Cab. Yankuam, Rio Nangaritza, Zamora-Chinchipe, Ecuador, 1000m; August 2023



AZ24-0355

Thagona hedila (Druce, 1906) ♀ 36mm

Cab. Yankuam, Rio Nangaritza, Zamora-Chinchipe, Ecuador, 1000m; August 2023



Subfamily *Hypocalinae* Guenée, 1852

AZ21-0256

Hypocala andremona (Stoll, [1781]) ♀ 46mm

Chuchuvi, Esmeraldas, Ecuador, 1000m; July 2021



Subfamily *Eulepidotinae* Grote, 1895Tribe *Eulepidotini* Grote, 1895

AZ24-0274

Eulepidotis corrina (Cramer, 1775) ♂ 29mmRd. to R. Chumberiaza, Zurmi,
Zamora-Chinchipec, Ecuador, 1600m;
August 2023

AZ22-0352

Eulepidotis dominicata
(Guenée, 1852) ♀ 38mmChuchuvi, Esmeraldas, Ecuador,
1000m; August 2022

AZ22-0353

Eulepidotis dominicata
(Guenée, 1852) ♂ 40mmChuchuvi, Esmeraldas, Ecuador,
1000m; August 2022

AZ22-0182

Eulepidotis preclara Todd, 1962
♀ 30mmP-to Misahualli, Napo, Ecuador,
550m; August 2022

AZ24-0366

Eulepidotis preclara Todd, 1962
♂ 31mmCab. Yankuam, Rio Nangaritzza,
Zamora-Chinchipec, Ecuador, 1000m;
August 2023

AZ21-0224

Eulepidotis viridissima (Bar,
1876) ♀ 30mm

Chuchuvi, Esmeraldas, Ecuador,
1000m; July 2021



Tribe *Panopodini* Forbes, 1954

AZ24-0367

Antiblemma abstrusa (Schaus,
1911) ♂ 30mm

Namakuntza, Rio Nambija,
Zamora-Chinchiipe, Ecuador, 1100m;
August 2023



AZ24-0243

Antiblemma imitans (Walker,
1858) ♀ 46mm

Cab. Yankuam, Rio Nangaritzza,
Zamora-Chinchiipe, Ecuador, 1000m;
August 2023



AZ21-0556

Antiblemma orbiculata (Felder,
1874) ♂ 39mm

Chuchuvi, Esmeraldas, Ecuador,
1000m; July 2021



AZ24-0263

Gorgone ?spec. ♂ 49mm

Cab. Yankuam, Rio Nangaritzza,
Zamora-Chinchiipe, Ecuador, 1000m;
August 2023



AZ22-0355

Obroatis aff. *distincta* Butler,
1879 ♂ 46mm

Chuchuvi, Esmeraldas, Ecuador,
1000m; August 2022



AZ24-0371

Obroatis cf. *rufa* Schaus, 1904
♀ 57mm

Rd. to R. Chumberiaza, Zurmi,
Zamora-Chinchipec, Ecuador, 1600m;
August 2023



Subfamily *Calpinae* Boisduval, 1840

AZ22-0354

Pachyplastis *apicalis* Felder,
1874 ♂ 42mm

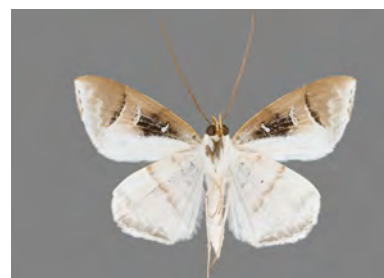
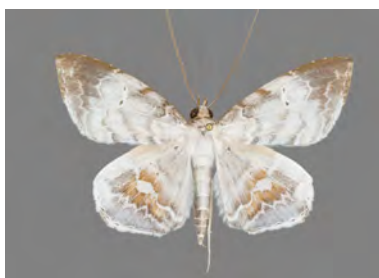
Chuchuvi, Esmeraldas, Ecuador,
1000m; August 2022



AZ24-0370

Macrodes *columbalis* Guenée,
1854 ♂ 51mm

Cab. Yankuam, Rio Nangaritzza,
Zamora-Chinchipec, Ecuador, 1000m;
August 2023

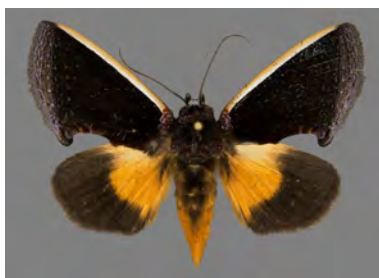


Tribe *Calpini* Boisduval, 1840

AZ22-0339

Gonodonta *holosericea* Guenée,
1852 ♀ 45mm

Chuchuvi, Esmeraldas, Ecuador,
1000m; August 2022



AZ24-0362

Gonodonta milla Thöny, 1999

♂ 32mm

Cab. Yankuam, Rio Nangaritzza,
Zamora-Chinchiipe, Ecuador, 1000m;
August 2023



AZ21-0257

Graphigona regina (Cramer,
[1780]) ♂ 85mm

Chuchuvi, Esmeraldas, Ecuador,
1000m; July 2021

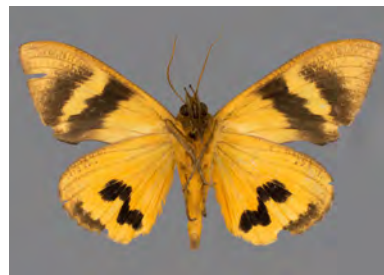


Tribe *Ophiderini* Guenée, 1852

AZ21-0255

Eudocima colubra (Schaus,
1911) ♂ 90mm

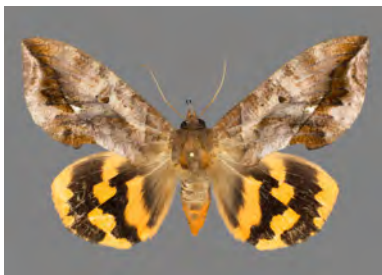
Chuchuvi, Esmeraldas, Ecuador,
1000m; July 2021



AZ21-0060

Eudocima procius (Cramer,
[1777]) ♀ 84mm

Mera, Pastaza, Ecuador, 1000m;
July 2021

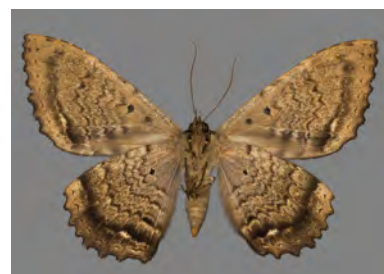
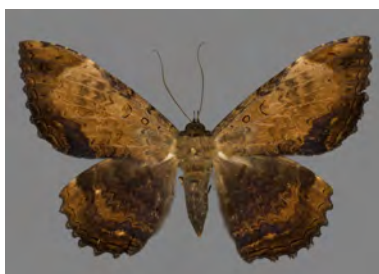


Subfamily *Erebinae* Leach, [1815]Tribe *Thermesiini* Guenée, 1852

AZ21-0274

Ascalapha odorata (Linnaeus,
1758) ♂ 164mmChuchuvi, Esmeraldas, Ecuador,
1000m; July 2021

AZ21-0555

Feigeria magna (Gmelin,
[1790]) ♀ 93mmChuchuvi, Esmeraldas, Ecuador,
1000m; July 2021

AZ22-0357

Hemeroblemma scolopacea
(Cramer, 1777) ♂ 61mmChuchuvi, Esmeraldas, Ecuador,
1000m; August 2022

AZ24-0425

Hemeroblemma scolopacea
(Cramer, 1777) ♀ 68mmNamakuntza, Rio Nambija,
Zamora-Chinchiipe, Ecuador, 1100m;
August 2023

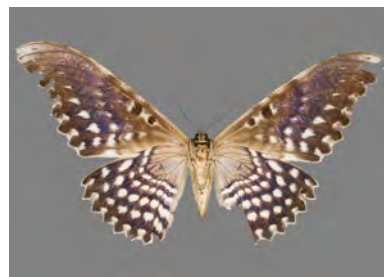
AZ24-0372

Hemeroblemma laguerrei Barbut
& Lalanne-Cassou, 2005
♂ 76mmRd. to R. Chumberiaza, Zurmi,
Zamora-Chinchiipe, Ecuador, 1600m;
August 2023

AZ22-0325

Thysania agrippina (Cramer,
[1776]) ♀ 217mm

Chuchuvi, Esmeraldas, Ecuador,
1000m; August 2022

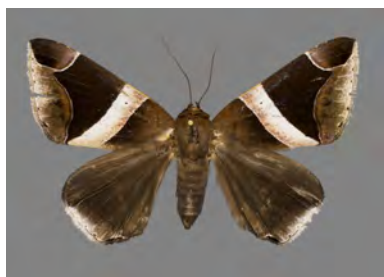


Tribe *Ophiusini* Guenée, 1837

AZ21-0273

Dysgonia expediens (Walker,
1858) ♀ 65mm

Tena, Napo, Ecuador, 650m; July
2021



Tribe *Melipotini* Grote, 1895

AZ21-0253

Orodesma ? senecauxi
Lalanne-Cassou et al. 1997
♂ 63mm

Chuchuvi, Esmeraldas, Ecuador,
1000m; July 2021



Tribe *Catocalini* Boisduval, [1828]

AZ24-0272

Ocalaria guarana Schaus, 1906
♂ 29mm

Namakuntza, Rio Nambija,
Zamora-Chinchiipe, Ecuador, 1100m;
August 2023



Subfamily *Arctiinae* Leach, [1815]

Tribe *Arctiini* Leach, 1815

AZ24-0133

Pseudalus leos occidentalis
Rothschild, 1909 ♂ 28mm

Cab. Yankuam, Rio Nangaritzza,
Zamora-Chinchi, Ecuador, 1000m;
August 2023



AZ21-0058

Pseudalus salmonaceus
(Rothschild, 1909) ♀ 47mm

Mera, Pastaza, Ecuador, 1000m;
July 2021



Subtribe *Ctenuchina* W. Kirby, 1837

AZ21-0363

Pseudophaio rosenbergi
(Rothschild, 1911) ♀ 46mm

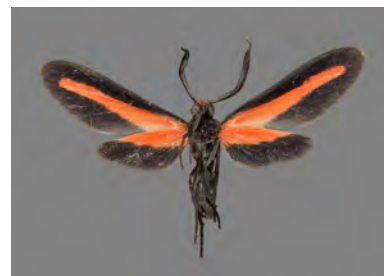
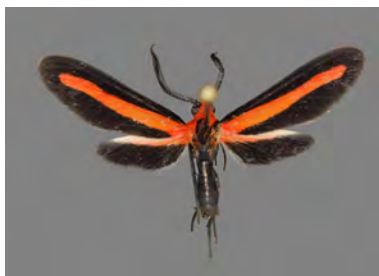
Chuchuvi, Esmeraldas, Ecuador,
1000m; July 2021



AZ22-0174

Tipulodes rubriceps *Dognin,*
1912 ♂ 22mm

P-to Misahualli, Napo, Ecuador,
550m; August 2022



AZ24-0052

Hypocladia militaris *(Butler,*
1877) ♂ 28mm

Cab. Yankuam, Rio Nangaritzza,
Zamora-Chinchi, Ecuador, 1000m;
August 2023



AZ24-0048

Correbidia calopteridia (Butler, 1878) ♂ 30mm

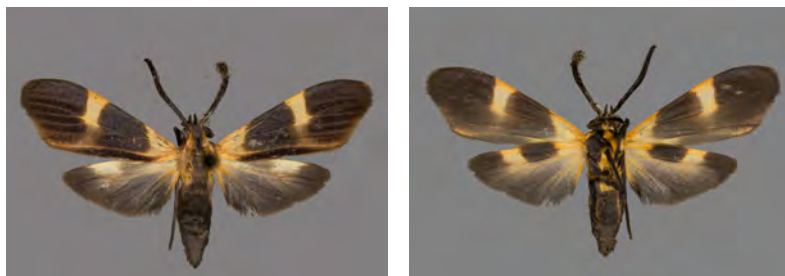
Cab. Yankuam, Rio Nangaritza, Zamora-Chinchiipe, Ecuador, 1000m; August 2023



AZ22-0429

Correbidia notata (Butler, 1878) ♂ 25mm

Chuchuvi, Esmeraldas, Ecuador, 1000m; August 2022



AZ21-0548

Correbidia ?*spec.* ♀ 26mm

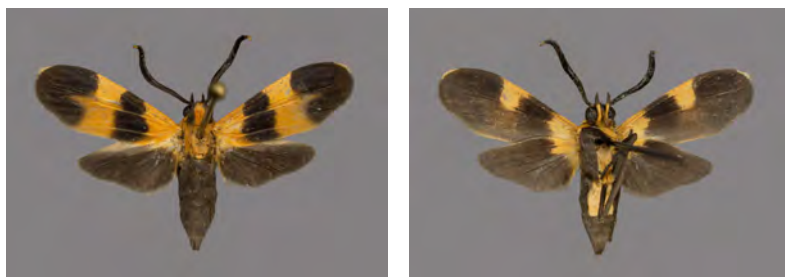
Chuchuvi, Esmeraldas, Ecuador, 1000m; July 2021



AZ22-0428

Correbidia ?*spec.* ♂ 22mm

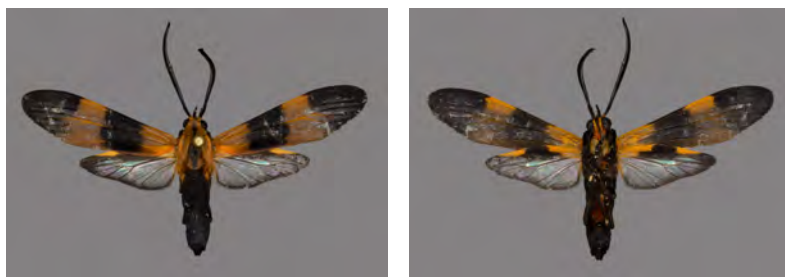
Chuchuvi, Esmeraldas, Ecuador, 1000m; August 2022



AZ22-0430

Correbia elongata Rothschild, 1912 ♂ 39mm

Chuchuvi, Esmeraldas, Ecuador, 1000m; August 2022



AZ22-0535

Correbia lycoides (Walker, 1854) ♂ 39mm

Mera, Pastaza, Ecuador, 1100m; August 2022



AZ24-0047

Correbia lycoides (Walker, 1854) ♀ 41mm

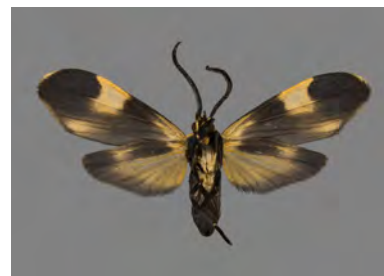
Namakuntza, Rio Nambija, Zamora-Chinchipe, Ecuador, 1100m; August 2023



AZ22-0536

Correbia minima Druce, 1905 ♀ 27mm

Mera, Pastaza, Ecuador, 1100m; August 2022



AZ24-0050

Correbia cf. minima Druce, 1905 ♂ 20mm

Namakuntza, Rio Nambija, Zamora-Chinchipe, Ecuador, 1100m; August 2023



AZ24-0045

Correbia negrona Draudt, 1917 ♂ 40mm

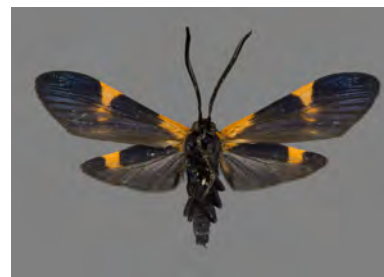
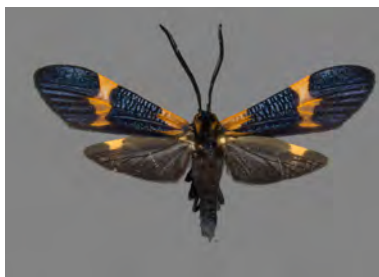
Via Nambija, San Carlos De Las Minas, Zamora-Chinchipe, Ecuador, 1700m; August 2023



AZ24-0046

Correbia cf. oberthueri Hampson, 1898 ♂ 36mm

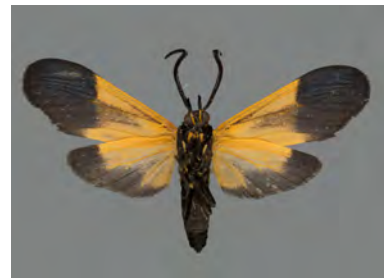
Rd. to R. Chumberiaza, Zurmi, Zamora-Chinchipe, Ecuador, 1600m; August 2023



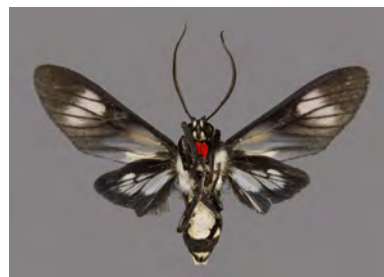
AZ21-0352

Correbia ?spec. ♂ 32mm

Chuchuvi, Esmeraldas, Ecuador, 1000m; July 2021



AZ21-0321

Telioneura glaucopis Felder,
1874 ♂ 32mmChuchuvi, Esmeraldas, Ecuador,
1000m; July 2021

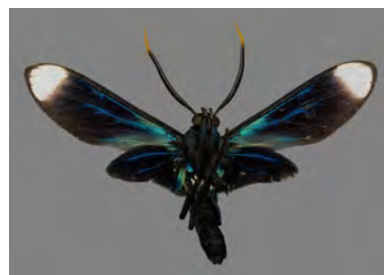
AZ21-0549

Heliura aff. mimula Draudt,
1917 ♂ 34mmChuchuvi, Esmeraldas, Ecuador,
1000m; July 2021

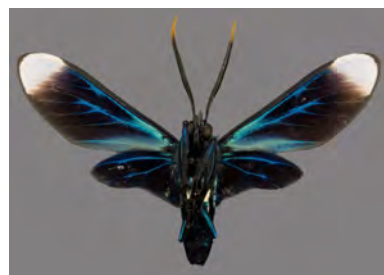
AZ24-0004

Heliura cf. thysbe (Möschler,
1877) ♀ 36mmCab. Yankuam, Rio Nangaritzza,
Zamora-Chinchipe, Ecuador, 1000m;
August 2023

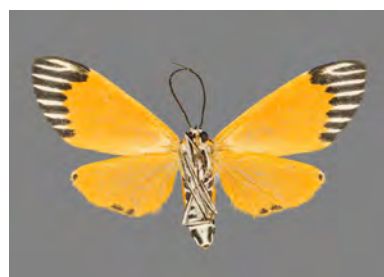
AZ21-0351

Timalus leucomela (Walker,
1856) ♂ 45mmTena, Napo, Ecuador, 650m; July
2021

AZ24-0055

Timalus leucomela (Walker,
1856) ♂ 50mmCab. Yankuam, Rio Nangaritzza,
Zamora-Chinchipe, Ecuador, 1000m;
August 2023

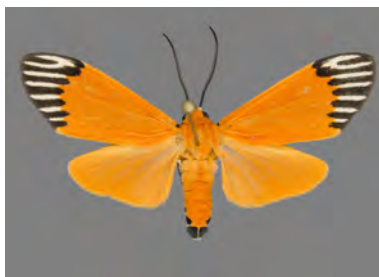
AZ21-0015

Uranophora walkeri (Druce,
1889) ♀ 35mmMera, Pastaza, Ecuador, 1000m;
July 2021

AZ24-0168

Uranophora walkeri (Druce,
1889) ♂ 33mm

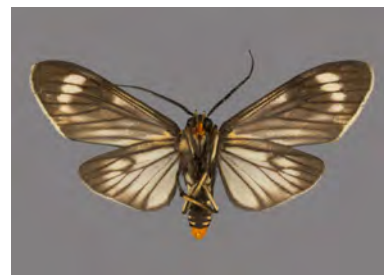
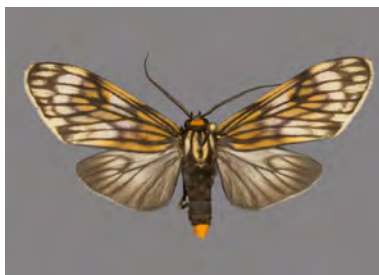
Cab. Yankuam, Rio Nangaritzza,
Zamora-Chinchiipe, Ecuador, 1000m;
August 2023



AZ22-0409

Theages decoram (Schaus, 1910)
♂ 40mm

Chuchuvi, Esmeraldas, Ecuador,
1000m; August 2022



AZ22-0410

Theages flavicaput (Hampson,
1898) ♂ 40mm

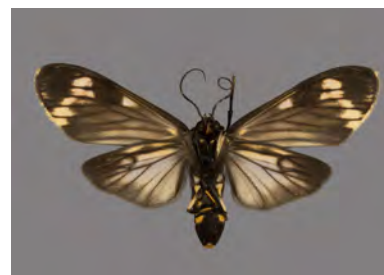
Chuchuvi, Esmeraldas, Ecuador,
1000m; August 2022



AZ22-0418

Theages flavicaput (Hampson,
1898) ♀ 45mm

Chuchuvi, Esmeraldas, Ecuador,
1000m; August 2022



AZ22-0521

Theages griseatum (Rothschild,
1912) ♀ 48mm

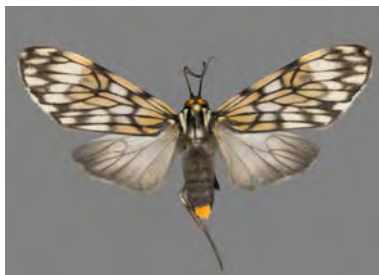
Mera, Pastaza, Ecuador, 1100m;
August 2022



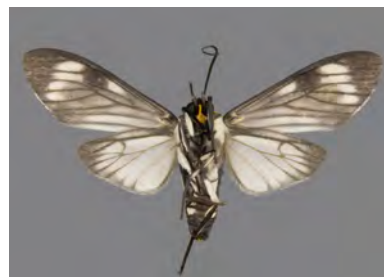
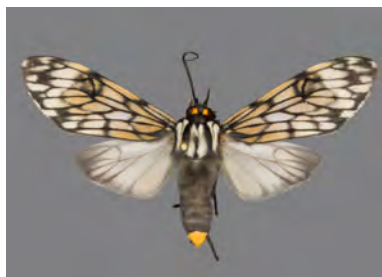
AZ24-0020

Theages griseatum (Rothschild,
1912) ♀ 46mm

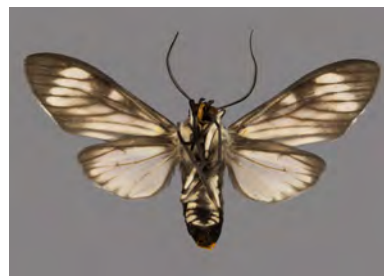
Namakuntza, Rio Nambija,
Zamora-Chinchiipe, Ecuador, 1100m;
August 2023



AZ24-0021

Theages griseatum (Rothschild, 1912) ♂ 43mmRd. to R. Chumberiaza, Zurmi,
Zamora-Chinchiipe, Ecuador, 1600m;
August 2023

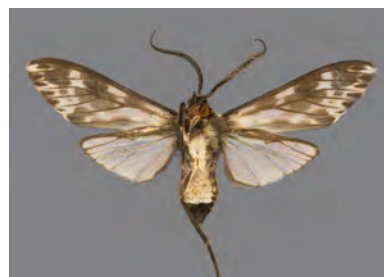
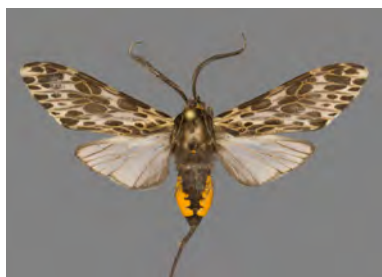
AZ21-0346

Theages xanthura (Schaus, 1910) ♂ 40mmTena, Napo, Ecuador, 650m; July
2021

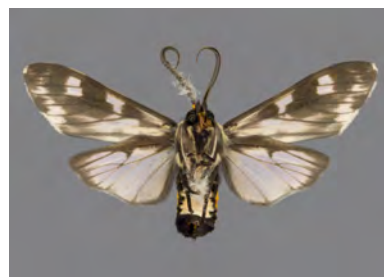
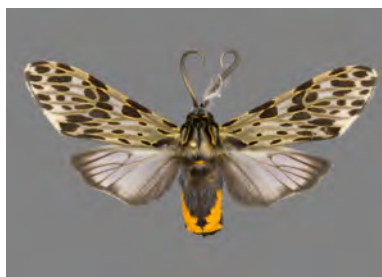
AZ24-0007

Theages xanthura (Schaus, 1910) ♂ 36mmCab. Yankuam, Rio Nangaritza,
Zamora-Chinchiipe, Ecuador, 1000m;
August 2023

AZ21-0381

Nelphe relegatum (Schaus, 1911) ♂ 40mmChuchuvi, Esmeraldas, Ecuador,
1000m; July 2021

AZ24-0022

Nelphe cf. rogersi (Druce, 1884) ♂ 43mmRd. to R. Chumberiaza, Zurmi,
Zamora-Chinchiipe, Ecuador, 1600m;
August 2023

AZ24-0031

Prosopidia merula (Dognin, 1891) ♂ 36mmRd. to R. Chumberiaza, Zurmi,
Zamora-Chinchiipe, Ecuador, 1600m;
August 2023

AZ22-0414

Prosopidia cf. morosa (Schaus, 1910) ♂ 39mm

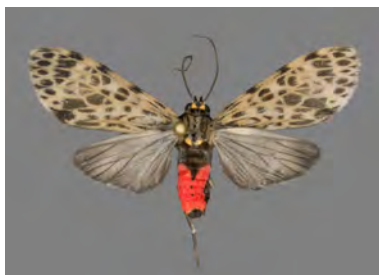
Chuchuvi, Esmeraldas, Ecuador, 1000m; August 2022



AZ24-0006

Eucereon aff. aeolum Hampson, 1898 ♀ 29mm

Cab. Yankuam, Rio Nangaritza, Zamora-Chinchipec, Ecuador, 1000m; August 2023



AZ21-0018

Eucereon appunctata Dognin, 1891 ♀ 31mm

Mera, Pastaza, Ecuador, 1000m; July 2021



AZ22-0413

Eucereon aroa Schaus, 1894 ♂ 29mm

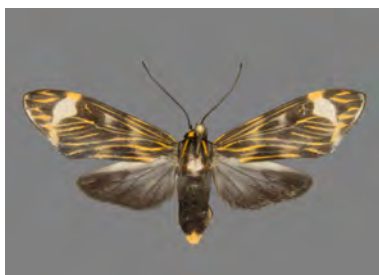
Chuchuvi, Esmeraldas, Ecuador, 1000m; August 2022



AZ24-0002

Eucereon casca Dognin, 1894 ♀ 35mm

Rd. to R. Chumberiaza, Zurmi, Zamora-Chinchipec, Ecuador, 1600m; August 2023

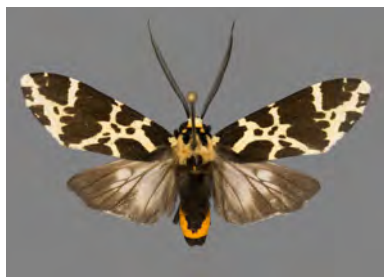
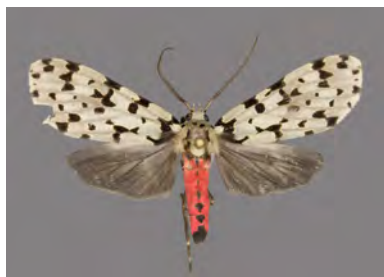


AZ24-0003

Eucereon casca Dognin, 1894 ♂ 32mm

Via Nambija, San Carlos De Las Minas, Zamora-Chinchipec, Ecuador, 1700m; August 2023



AZ21-0546*Ecereon consorta* Schaus, 1910
♂ 38mmChuchuvi, Esmeraldas, Ecuador,
1000m; July 2021**AZ24-0018***Ecereon consorta* Schaus, 1910
♂ 38mmNamakuntza, Rio Nambija,
Zamora-Chinchiipe, Ecuador, 1100m;
August 2023**AZ24-0019***Ecereon consorta* Schaus, 1910
♀ 42mmRd. to R. Chumberiaza, Zurmi,
Zamora-Chinchiipe, Ecuador, 1600m;
August 2023**AZ24-0011***Ecereon cf. discolor* Walker,
1856 ♀ 45mmRd. to R. Chumberiaza, Zurmi,
Zamora-Chinchiipe, Ecuador, 1600m;
August 2023**AZ24-0016***Ecereon cf. discolor* Walker,
1856 ♂ 30mmRd. to R. Chumberiaza, Zurmi,
Zamora-Chinchiipe, Ecuador, 1600m;
August 2023**AZ24-0001***Ecereon formosum* Dognin,
1905 ♀ 33mmCab. Yankuam, Rio Nangaritza,
Zamora-Chinchiipe, Ecuador, 1000m;
August 2023

AZ22-0407

Eucereon latifascia Walker,
1856 ♂ 42mm

Chuchuvi, Esmeraldas, Ecuador,
1000m; August 2022



AZ24-0010

Eucereon lineata (Dognin, 1889)
♂ 37mm

Rd. to R. Chumberiaza, Zurmi,
Zamora-Chinchipec, Ecuador, 1600m;
August 2023



AZ21-0020

Eucereon nebulosum Dognin,
1889 ♂ 27mm

Mera, Pastaza, Ecuador, 1000m;
July 2021



AZ24-0036

Eucereon obscura (Möschler,
1872) ♂ 28mm

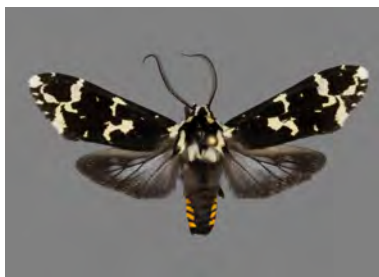
Via Nambija, San Carlos De Las
Minas, Zamora-Chinchipec, Ecuador,
1700m; August 2023



AZ24-0013

Eucereon ockendeni Druce, 1906
♂ 37mm

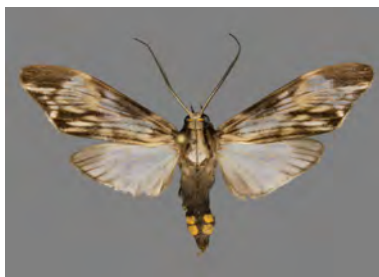
Rd. to R. Chumberiaza, Zurmi,
Zamora-Chinchipec, Ecuador, 1600m;
August 2023



AZ22-0551

Eucereon perstriata Hampson,
1909 ♂ 35mm

Mera, Pastaza, Ecuador, 1100m;
August 2022



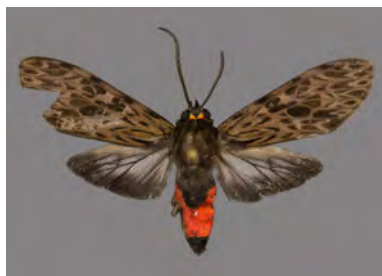
AZ22-0548

Eucereon phaeoproctum
Hampson, 1898 ♂ 23mmMera, Pastaza, Ecuador, 1100m;
August 2022

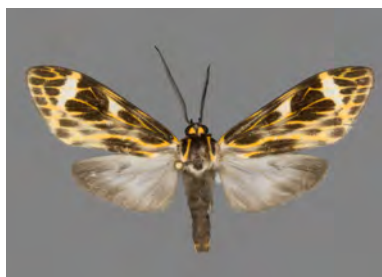
AZ24-0051

Eucereon phaeoproctum
Hampson, 1898 ♂ 24mmNamakuntza, Rio Nambija,
Zamora-Chinchiipe, Ecuador, 1100m;
August 2023

AZ21-0322

Eucereon pseudarchias
Hampson, 1898 ♂ 35mmChuchuvi, Esmeraldas, Ecuador,
1000m; July 2021

AZ24-0005

Eucereon pseudocasca
Rothschild, 1912 ♂ 37mmVia Nambija, San Carlos De Las
Minas, Zamora-Chinchiipe, Ecuador,
1700m; August 2023

AZ24-0015

Eucereon scyton (*Cramer,*
[1777]) ♂ 29mmCab. Yankuam, Rio Nangaritzza,
Zamora-Chinchiipe, Ecuador, 1000m;
August 2023

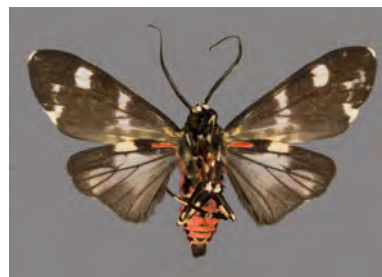
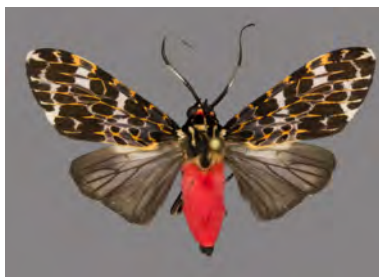
AZ24-0014

Eucereon surcata (*Dognin,*
1897) ♂ 36mmCab. Yankuam, Rio Nangaritzza,
Zamora-Chinchiipe, Ecuador, 1000m;
August 2023

AZ22-0405

Eucereon tarona Hampson,
1898 ♂ 32mm

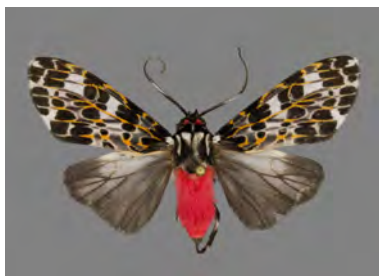
Chuchuvi, Esmeraldas, Ecuador,
1000m; August 2022



AZ22-0570

Eucereon tarona Hampson,
1898 ♂ 35mm

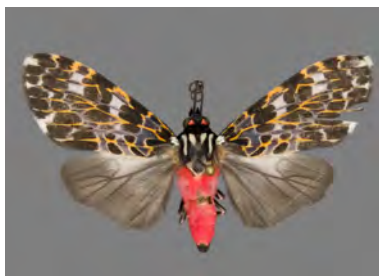
Mera, Pastaza, Ecuador, 1100m;
August 2022



AZ24-0017

Eucereon tarona Hampson,
1898 ♀ 37mm

Namakuntza, Rio Nambija,
Zamora-Chinchiipe, Ecuador, 1100m;
August 2023



AZ24-0024

Eucereon tarona Hampson,
1898 ♀ 36mm

Via Nambija, San Carlos De Las
Minas, Zamora-Chinchiipe, Ecuador,
1700m; August 2023



AZ24-0012

Eucereon tigrata
(Herrich-Schäffer, [1855])
♂ 34mm

Via Nambija, San Carlos De Las
Minas, Zamora-Chinchiipe, Ecuador,
1700m; August 2023

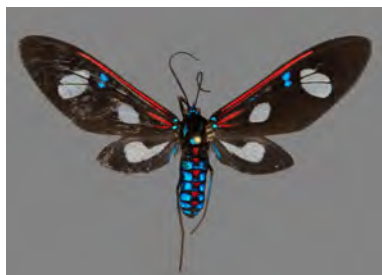
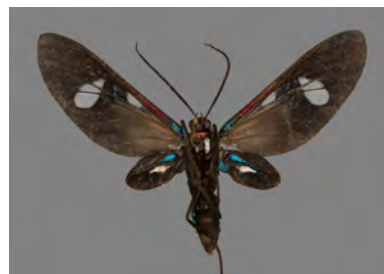
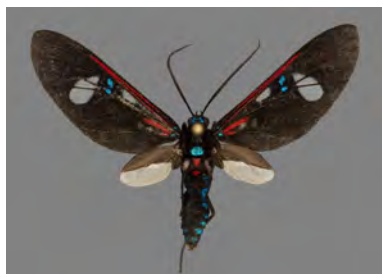
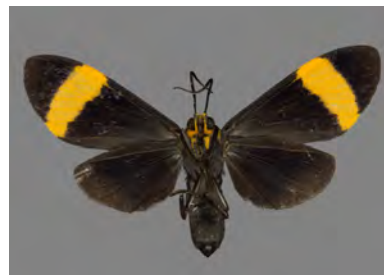
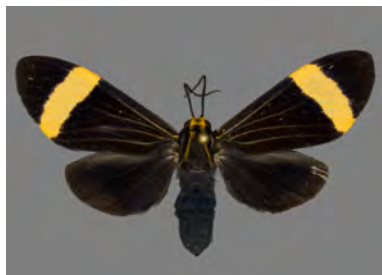


AZ24-0008

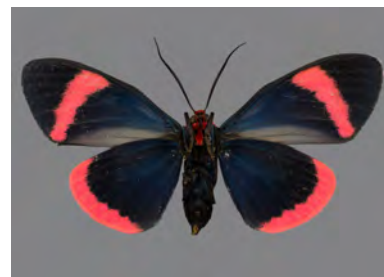
Eucereon zephyrum songoense
Draudt, 1915 ♂ 33mm

Rd. to R. Chumberiaza, Zurmi,
Zamora-Chinchiipe, Ecuador, 1600m;
August 2023

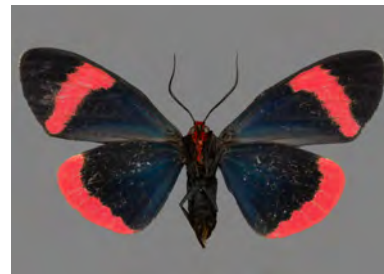


AZ24-0009*Eucreon* ?*spec.* ♂ 37mmRd. to R. Chumberiaza, Zurmi,
Zamora-Chinchipe, Ecuador, 1600m;
August 2023**AZ21-0125***Euclera diversipennis* (Walker,
1854) ♀ 51mmMera, Pastaza, Ecuador, 1000m;
July 2021**AZ21-0348***Euclera diversipennis* (Walker,
1854) ♂ 38mmTena, Napo, Ecuador, 650m; July
2021**AZ21-0397***Epidesma hoffmannsi*
(Rothschild, 1912) ♂ 29mmTena, Napo, Ecuador, 650m; July
2021**AZ22-0379***Epidesma oceola* (Dyar, 1910)
♂ 33mmChuchuvi, Esmeraldas, Ecuador,
1000m; August 2022**AZ24-0054***Epidesma ursula* (Stoll, [1781])
♂ 44mmNamakuntza, Rio Nambija,
Zamora-Chinchipe, Ecuador, 1100m;
August 2023

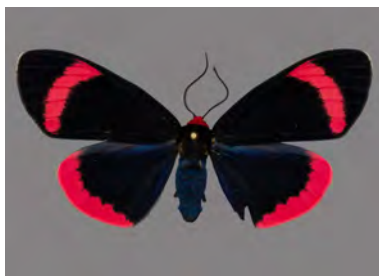
AZ21-0329

Coreura simsoni (Druce, 1885)
♂ 57mmChuchuvi, Esmeraldas, Ecuador,
1000m; July 2021

AZ21-0560

Coreura simsoni (Druce, 1885)
♂ 56mmChuchuvi, Esmeraldas, Ecuador,
1000m; July 2021

AZ22-0515

Coreura simsoni (Druce, 1885)
♀ 55mmMera, Pastaza, Ecuador, 1100m;
August 2022

AZ22-0566

Hyaleucerea costinotatum
(Dognin, 1900) ♀ 26mmMera, Pastaza, Ecuador, 1100m;
August 2022

AZ24-0025

Hyaleucerea gigantea (Druce,
1884) ♂ 42mmNamakuntza, Rio Nambija,
Zamora-Chinchiipe, Ecuador, 1100m;
August 2023

AZ24-0030

Hyaleucerea cf. lemoulti
(Schaus, 1905) ♂ 39mmRd. to R. Chumberiaza, Zurmi,
Zamora-Chinchiipe, Ecuador, 1600m;
August 2023

AZ24-0035*Patrelitura capys* (Cramer,
[1775]) ♂ 31mmCab. Yankuam, Rio Nangaritza,
Zamora-Chinchipe, Ecuador, 1000m;
August 2023**AZ21-0544***Episcepsis aelia* (Schaus, 1889)
♀ 30mmChuchuvi, Esmeraldas, Ecuador,
1000m; July 2021**AZ22-0299***Episcepsis capyscoides* Dognin,
1911 ♂ 32mmP-to Misahualli, Napo, Ecuador,
550m; August 2022**AZ24-0023***Episcepsis cf. coeruleocephala*
(Rothschild, 1912) ♂ 35mmNamakuntza, Rio Nambija,
Zamora-Chinchipe, Ecuador, 1100m;
August 2023**AZ24-0032***Episcepsis aff. lamia* (Butler,
1877) ♂ 36mmVia Nambija, San Carlos De Las
Minas, Zamora-Chinchipe, Ecuador,
1700m; August 2023**AZ24-0033***Episcepsis aff. lamia* (Butler,
1877) ♀ 33mmCab. Yankuam, Rio Nangaritza,
Zamora-Chinchipe, Ecuador, 1000m;
August 2023

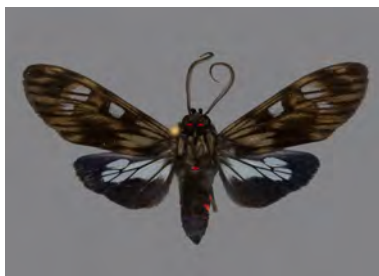
AZ24-0037

Episcepsis leneus (Cramer,
1779) ♂ 32mmCab. Yankuam, Rio Nangaritzza,
Zamora-Chinchiipe, Ecuador, 1000m;
August 2023

AZ21-0362

Episcepsis scintillans
Rothschild, 1911 ♂ 33mmChuchuvi, Esmeraldas, Ecuador,
1000m; July 2021

AZ21-0361

Episcepsis aff. demonis (Druce,
1896) ♂ 36mmChuchuvi, Esmeraldas, Ecuador,
1000m; July 2021

AZ24-0041

Episcepsis cf. demonis (Druce,
1896) ♂ 35mmCab. Yankuam, Rio Nangaritzza,
Zamora-Chinchiipe, Ecuador, 1000m;
August 2023

AZ21-0547

Episcepsis cf. hypoleuca
Hampson, 1898 ♂ 36mmChuchuvi, Esmeraldas, Ecuador,
1000m; July 2021

AZ21-0593

Episcepsis cf. hypoleuca
Hampson, 1898 ♀ 36mmChuchuvi, Esmeraldas, Ecuador,
1000m; July 2021

AZ21-0543

Episcepsis moloneyi (Druce,
1897) ♂ 33mm

Chuchuvi, Esmeraldas, Ecuador,
1000m; July 2021



AZ24-0184

Episcepsis ockendeni Rothschild,
1911 ♂ 38mm

Via Nambija, San Carlos De Las
Minas, Zamora-Chinchiipe, Ecuador,
1700m; August 2023



Subtribe *Euchromiina* Butler, 1876

AZ22-0533

Pseudopompilia mimica Druce,
1898 ♂ 44mm

Mera, Pastaza, Ecuador, 1100m;
August 2022



AZ24-0039

Methysia aenetus (Schaus,
1896) ♂ 31mm

Via Nambija, San Carlos De Las
Minas, Zamora-Chinchiipe, Ecuador,
1700m; August 2023



AZ22-0501

Autochloris cf. collocata
(Walker, 1864) ♂ 34mm

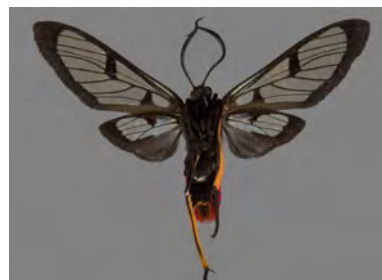
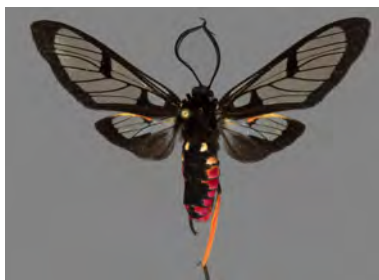
Mera, Pastaza, Ecuador, 1100m;
August 2022



AZ22-0569

Autochloris aff. cuma (Druce, 1897) ♂ 44mm

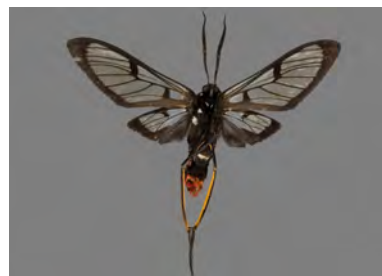
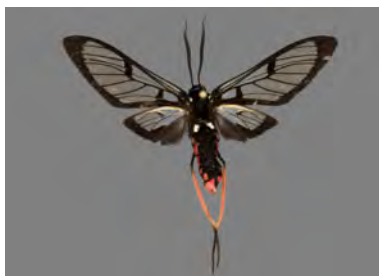
Mera, Pastaza, Ecuador, 1100m;
August 2022



AZ24-0095

Autochloris cuma (Druce, 1897)
♂ 46mm

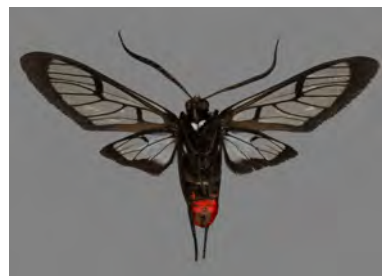
Rd. to R. Chumberiaza, Zurmi,
Zamora-Chinchiipe, Ecuador, 1600m;
August 2023



AZ21-0347

Autochloris aff. flavipes Draudt,
1915 ♂ 43mm

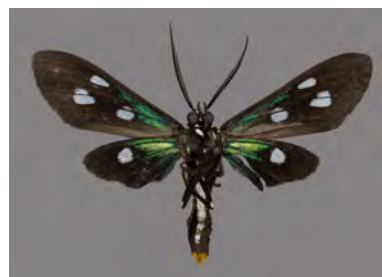
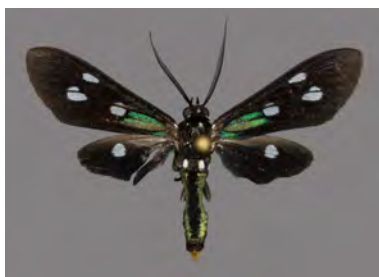
Tena, Napo, Ecuador, 650m; July
2021



AZ21-0342

Leucopleura viridis Gaede, 1926
♂ 30mm

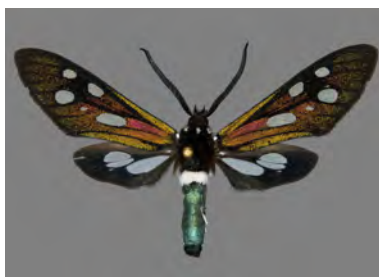
Tena, Napo, Ecuador, 650m; July
2021



AZ23-0273

Phaio quadriguttata Dognin,
1909 ♂ 46mm

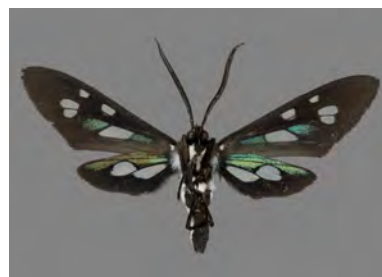
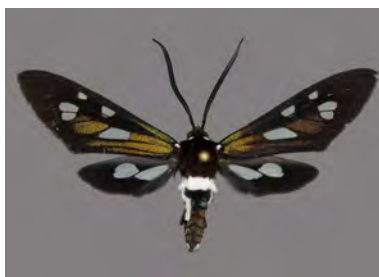
Rio Blanco, Banos, Tungurahua,
Ecuador, 1950m; August 2023



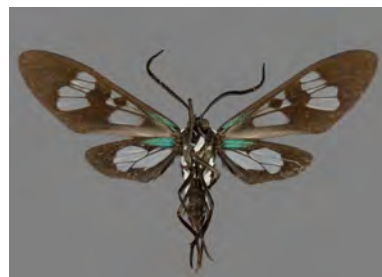
AZ24-0057

Phaio cephalena (Druce, 1883)
♂ 41mm

Via Nambija, San Carlos De Las
Minas, Zamora-Chinchiipe, Ecuador,
1700m; August 2023



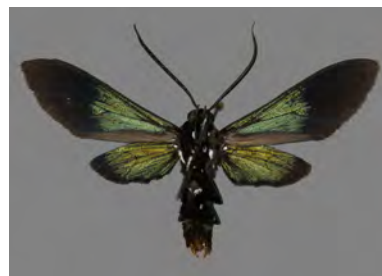
AZ24-0058

Phaio acquiguttata Dognin,
1909 ♀ 43mmRd. to R. Chumberiaza, Zurmi,
Zamora-Chinchiipe, Ecuador, 1600m;
August 2023

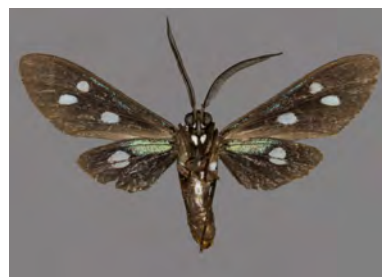
AZ24-0059

Phaio acquiguttata Dognin,
1909 ♂ 38mmVia Nambija, San Carlos De Las
Minas, Zamora-Chinchiipe, Ecuador,
1700m; August 2023

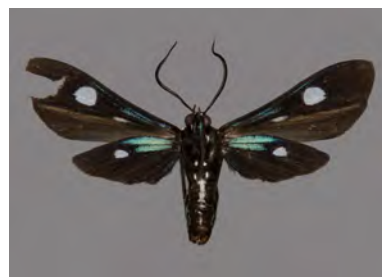
AZ21-0591

Calonotos cf. aurata (Walker,
1854) ♂ 40mmChuchuvi, Esmeraldas, Ecuador,
1000m; July 2021

AZ24-0056

Calonotos chalcipleura
Hampson, 1898 ♂ 41mmNamakuntza, Rio Nambija,
Zamora-Chinchiipe, Ecuador, 1100m;
August 2023

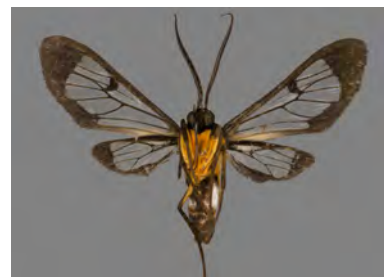
AZ21-0344

Calonotos triplaga Hampson,
1909 ♂ 35mmTena, Napo, Ecuador, 650m; July
2021

AZ22-0514

Sarosa acutior (Felder, 1874)
♂ 29mmMera, Pastaza, Ecuador, 1100m;
August 2022

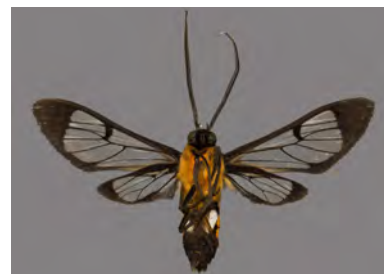
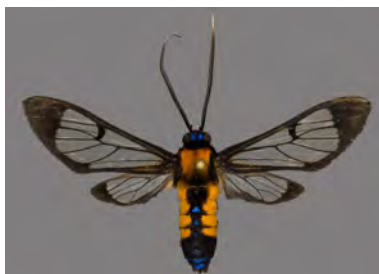
AZ21-0538

Sarosa notata (Butler, 1876)
♂ 37mmChuchuvi, Esmeraldas, Ecuador,
1000m; July 2021

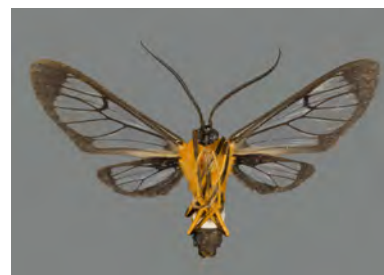
AZ21-0540

Sarosa notata (Butler, 1876)
♂ 37mmChuchuvi, Esmeraldas, Ecuador,
1000m; July 2021

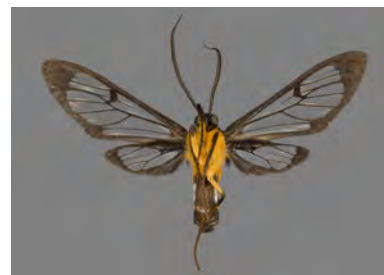
AZ22-0358

Sarosa notata (Butler, 1876)
♂ 34mmChuchuvi, Esmeraldas, Ecuador,
1000m; August 2022

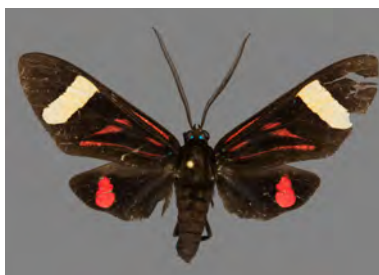
AZ24-0089

Sarosa xanthobasis Druce, 1898
♂ 45mmRd. to R. Chumberiaza, Zurmi,
Zamora-Chinchi, Ecuador, 1600m;
August 2023

AZ24-0092

Sarosa cf. xanthobasis Druce,
1898 ♂ 44mmRd. to R. Chumberiaza, Zurmi,
Zamora-Chinchi, Ecuador, 1600m;
August 2023

AZ21-0117

Histioea proserpina (Hübner,
1823) ♂ 55mmMera, Pastaza, Ecuador, 1000m;
July 2021

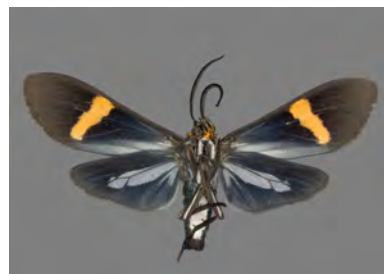
AZ24-0066

Histioea proserpina (Hübner,
1823) ♂ 50mmRd. to R. Chumberiaza, Zurmi,
Zamora-Chinchipe, Ecuador, 1600m;
August 2023

AZ24-0042

Aclytia hoffmannsi Rothschild,
1912 ♀ 35mmCab. Yankuam, Rio Nangaritza,
Zamora-Chinchipe, Ecuador, 1000m;
August 2023

AZ24-0043

Aclytia hoffmannsi Rothschild,
1912 ♂ 30mmCab. Yankuam, Rio Nangaritza,
Zamora-Chinchipe, Ecuador, 1000m;
August 2023

AZ24-0087

Chrostosoma haematica (Perty,
1834) ♂ 24mmCab. Yankuam, Rio Nangaritza,
Zamora-Chinchipe, Ecuador, 1000m;
August 2023

AZ24-0088

Chrostosoma cf. haematica
(Perty, 1834) ♂ 25mmNamakuntza, Rio Nambija,
Zamora-Chinchipe, Ecuador, 1100m;
August 2023

AZ24-0064

Chrysocale gigas Rothschild,
1911 ♂ 57mmRd. to R. Chumberiaza, Zurmi,
Zamora-Chinchipe, Ecuador, 1600m;
August 2023

AZ24-0065

Chrysocale gigas Rothschild,
1911 ♂ 54mm

Rd. to R. Chumberiaza, Zurmi,
Zamora-Chinchiipe, Ecuador, 1600m;
August 2023



AZ21-0550

Dinia mena (Hübner, [1827])
♂ 28mm

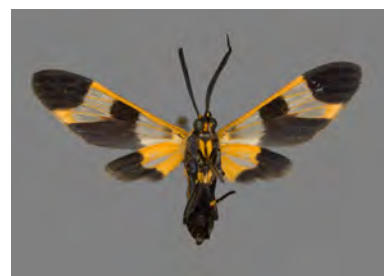
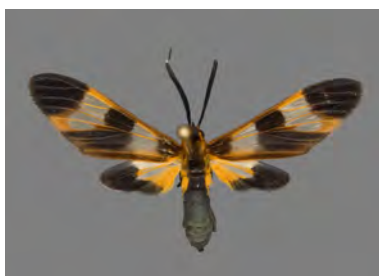
Chuchuvi, Esmeraldas, Ecuador,
1000m; July 2021



AZ24-0049

Dycladia c. cf. correbioides
Felder, 1874 ♂ 28mm

Cab. Yankuam, Rio Nangaritza,
Zamora-Chinchiipe, Ecuador, 1000m;
August 2023



AZ24-0094

Gymnelia carabayana
(Rothschild, 1911) ♂ 30mm

Rd. to R. Chumberiaza, Zurmi,
Zamora-Chinchiipe, Ecuador, 1600m;
August 2023



AZ22-0415

Gymnelia salvini (Butler, 1876)
♂ 35mm

Chuchuvi, Esmeraldas, Ecuador,
1000m; August 2022



AZ22-0417

Gymnelia salvini (Butler, 1876)
♂ 39mm

Chuchuvi, Esmeraldas, Ecuador,
1000m; August 2022



AZ24-0044

Holophaea eurytorna Hampson,
1914 ♂ 30mmRd. to R. Chumberiaza, Zurmi,
Zamora-Chinchiipe, Ecuador, 1600m;
August 2023

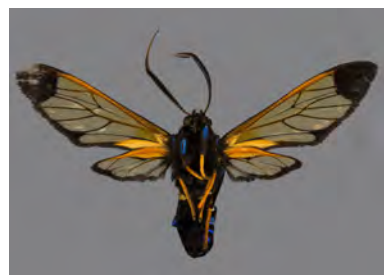
AZ24-0090

Homoeocera trizona Dognin,
1906 ♂ 41mmRd. to R. Chumberiaza, Zurmi,
Zamora-Chinchiipe, Ecuador, 1600m;
August 2023

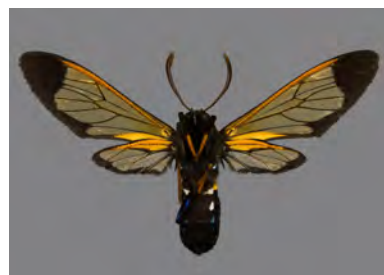
AZ24-0091

Homoeocera trizona Dognin,
1906 ♂ 42mmRd. to R. Chumberiaza, Zurmi,
Zamora-Chinchiipe, Ecuador, 1600m;
August 2023

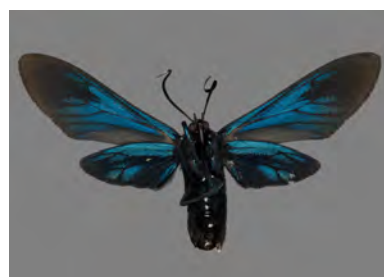
AZ21-0356

Isanthrene basifera Walker,
[1865] ♂ 37mmChuchuvi, Esmeraldas, Ecuador,
1000m; July 2021

AZ21-0357

Isanthrene basifera Walker,
[1865] ♂ 35mmChuchuvi, Esmeraldas, Ecuador,
1000m; July 2021

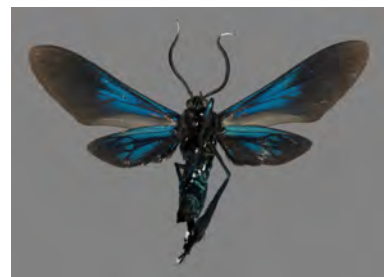
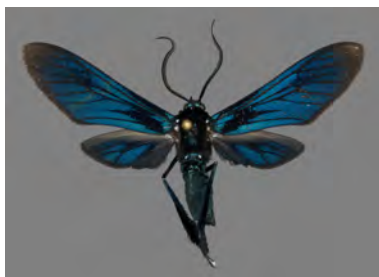
AZ24-0067

Macrocneme aff. adonis Druce,
1884 ♀ 44mmRd. to R. Chumberiaza, Zurmi,
Zamora-Chinchiipe, Ecuador, 1600m;
August 2023

AZ24-0068

Macrocneme aff. adonis Druce,
1884 ♂ 40mm

Via Nambija, San Carlos De Las
Minas, Zamora-Chinchiipe, Ecuador,
1700m; August 2023



AZ21-0366

Macrocneme caerulescens
Dognin, 1906 ♂ 32mm

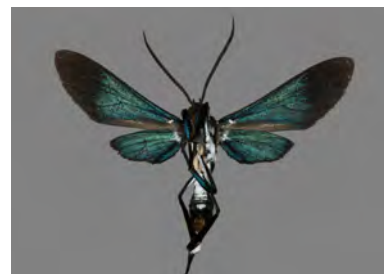
Tena, Napo, Ecuador, 650m; July
2021



AZ22-0537

Macrocneme caerulescens
Dognin, 1906 ♂ 33mm

Mera, Pastaza, Ecuador, 1100m;
August 2022



AZ24-0060

Macrocneme cf. caerulescens
Dognin, 1906 ♂ 34mm

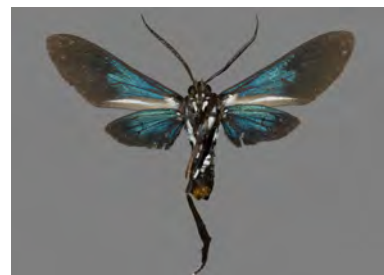
Namakuntza, Rio Nambija,
Zamora-Chinchiipe, Ecuador, 1100m;
August 2023



AZ24-0061

Macrocneme cf. leucostigma
(Perty, 1834) ♂ 36mm

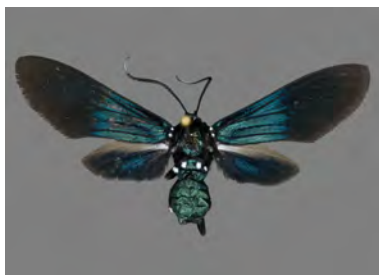
Cab. Yankuam, Rio Nangaritza,
Zamora-Chinchiipe, Ecuador, 1000m;
August 2023



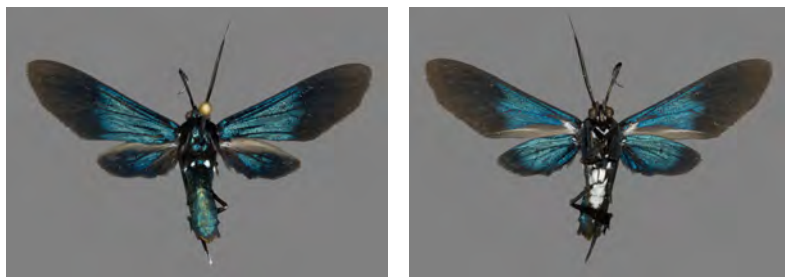
AZ24-0062

Macrocneme cf. leucostigma
(Perty, 1834) ♀ 38mm

Cab. Yankuam, Rio Nangaritza,
Zamora-Chinchiipe, Ecuador, 1000m;
August 2023



AZ24-0069

Macrocneme leucostigma
(Perty, 1834) ♂ 36mmNamakuntza, Rio Nambija,
Zamora-Chinchiipe, Ecuador, 1100m;
August 2023

AZ22-0543

Macrocneme cf. semiviridis
Druce, 1911 ♀ 37mmMera, Pastaza, Ecuador, 1100m;
August 2022

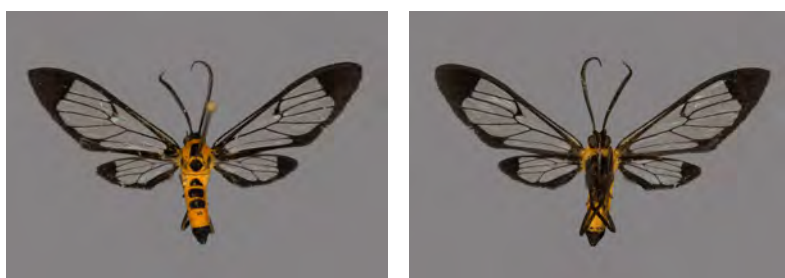
AZ22-0547

Macrocneme cf. semiviridis
Druce, 1911 ♂ 35mmMera, Pastaza, Ecuador, 1100m;
August 2022

AZ24-0040

Macrocneme viridis (Druce,
1883) ♂ 35mmRd. to R. Chumberiaza, Zurmi,
Zamora-Chinchiipe, Ecuador, 1600m;
August 2023

AZ21-0532

Mesothen attali Jean-Aimé
Cerde 2017 ♀ 30mmChuchuvi, Esmeraldas, Ecuador,
1000m; July 2021

AZ22-0493

Mesothen bisexualis Dognin,
1912 ♂ 31mmMera, Pastaza, Ecuador, 1100m;
August 2022

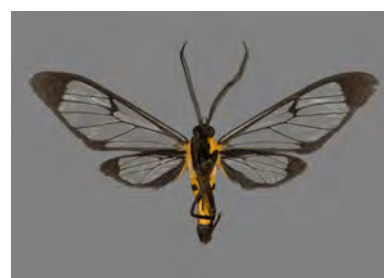
AZ24-0072

Mesothen bisexualis Dognin,
1912 ♀ 35mmRd. to R. Chumberiaza, Zurmi,
Zamora-Chinchiipe, Ecuador, 1600m;
August 2023

AZ22-0456

Mesothen flavicostata Druce,
1906 ♂ 29mmMera, Pastaza, Ecuador, 1100m;
August 2022

AZ24-0070

Mesothen ignea Druce, 1898
♂ 36mmVia Nambija, San Carlos De Las
Minas, Zamora-Chinchiipe, Ecuador,
1700m; August 2023

AZ24-0071

Mesothen ignea Druce, 1898
♀ 38mmRd. to R. Chumberiaza, Zurmi,
Zamora-Chinchiipe, Ecuador, 1600m;
August 2023

AZ22-0520

Mesothen roseifemur Draudt,
1915 ♂ 29mmMera, Pastaza, Ecuador, 1100m;
August 2022

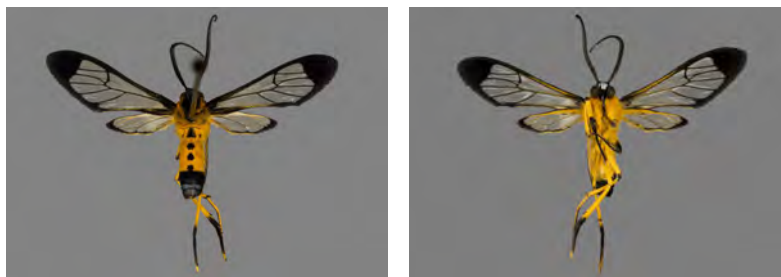
AZ24-0080

Mesothen roseifemur Draudt,
1915 ♀ 34mmVia Nambija, San Carlos De Las
Minas, Zamora-Chinchiipe, Ecuador,
1700m; August 2023

AZ22-0375

Mesotheren ?spec. ♂ 22mm

Chuchuvi, Esmeraldas, Ecuador,
1000m; August 2022



AZ21-0535

Pheia elegans (Druce, 1884)

♀ 27mm

Chuchuvi, Esmeraldas, Ecuador,
1000m; July 2021



AZ24-0077

Phoenicoprocta aff. sanguinea
(Walker, 1854) ♂ 23mm

Cab. Yankuam, Rio Nangaritzza,
Zamora-Chinchiipe, Ecuador, 1000m;
August 2023



AZ24-0078

Phoenicoprocta aff. sanguinea
(Walker, 1854) ♂ 23mm

Cab. Yankuam, Rio Nangaritzza,
Zamora-Chinchiipe, Ecuador, 1000m;
August 2023



AZ24-0081

Phoenicoprocta vacillans
(Walker, 1856) ♂ 30mm

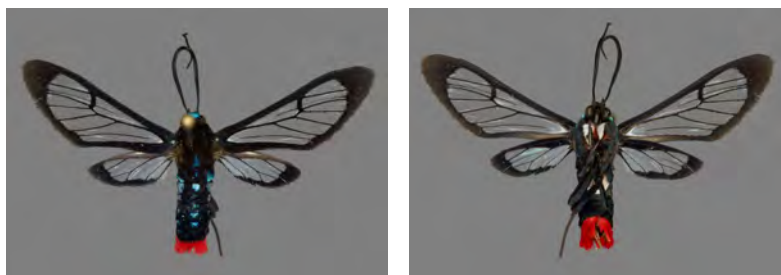
Cab. Yankuam, Rio Nangaritzza,
Zamora-Chinchiipe, Ecuador, 1000m;
August 2023



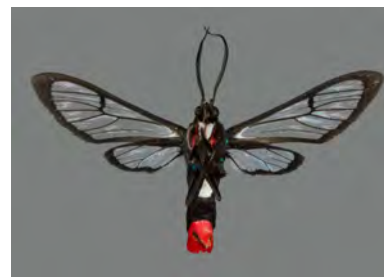
AZ24-0082

Phoenicoprocta vacillans
(Walker, 1856) ♂ 30mm

Cab. Yankuam, Rio Nangaritzza,
Zamora-Chinchiipe, Ecuador, 1000m;
August 2023



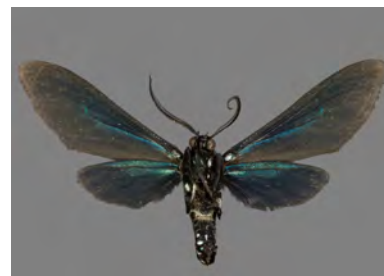
AZ24-0085

Phoenicoprocta vacillans
(Walker, 1856) ♂ 32mmCab. Yankuam, Rio Nangaritzza,
Zamora-Chinchiipe, Ecuador, 1000m;
August 2023

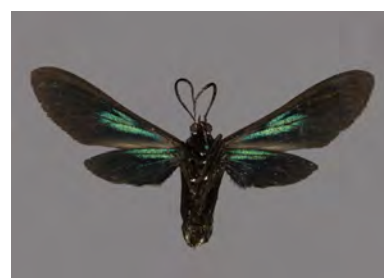
AZ21-0345

Poliopastea cf. anthracina
(Klages, 1906) ♂ 40mmTena, Napo, Ecuador, 650m; July
2021

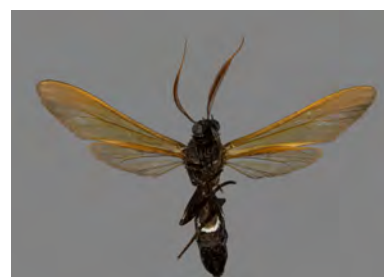
AZ24-0063

Poliopastea anthracina (Klages,
1906) ♂ 39mmCab. Yankuam, Rio Nangaritzza,
Zamora-Chinchiipe, Ecuador, 1000m;
August 2023

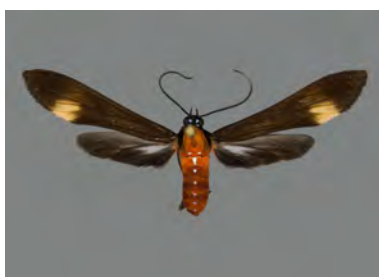
AZ21-0364

Poliopastea indistincta (Butler,
1876) ♀ 32mmChuchuvi, Esmeraldas, Ecuador,
1000m; July 2021

AZ22-0432

Pseudosphex ichneumonea
Herrich-Schäffer, [1854]
♂ 35mmChuchuvi, Esmeraldas, Ecuador,
1000m; August 2022

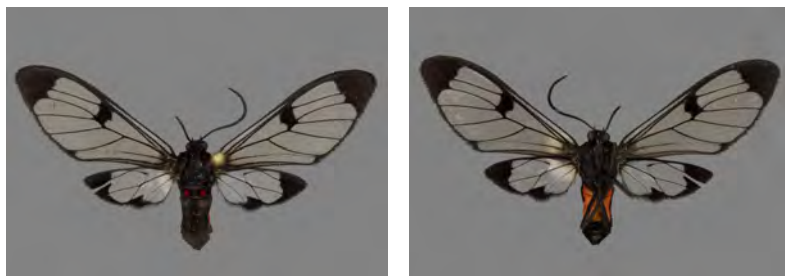
AZ22-0544

Rhynchopyga elongata (Dognin,
1890) ♀ 35mmMera, Pastaza, Ecuador, 1100m;
August 2022

AZ21-0023

Planuncus cf. absona (Draudt, 1915) ♀ 32mmMera, Pastaza, Ecuador, 1000m;
July 2021

AZ22-0487

Planuncus cf. absona (Draudt, 1915) ♀ 32mmMera, Pastaza, Ecuador, 1100m;
August 2022

AZ24-0083

Planuncus cf. absona (Draudt, 1915) ♂ 28mmNamakuntza, Rio Nambija,
Zamora-Chinchiipe, Ecuador, 1100m;
August 2023

AZ21-0354

Saurita aff. arimensis Fleming, 1957 ♂ 22mmTena, Napo, Ecuador, 650m; July
2021

AZ22-0558

Saurita aff. arimensis Fleming, 1957 ♂ 24mmMera, Pastaza, Ecuador, 1100m;
August 2022

AZ21-0017

Saurita cassandra (Linnaeus, 1758) ♀ 34mmMera, Pastaza, Ecuador, 1000m;
July 2021

AZ21-0365

Saurita aff. cassandra
(*Linnaeus, 1758*) ♀ 28mm

Chuchuvi, Esmeraldas, Ecuador,
1000m; July 2021



AZ24-0038

Saurita diffusa Schaus, 1911
♂ 26mm

Rd. to R. Chumberiaza, Zurmi,
Zamora-Chinchiipe, Ecuador, 1600m;
August 2023



AZ21-0035

Saurita cf. hilda (*Druce, 1906*)
♂ 24mm

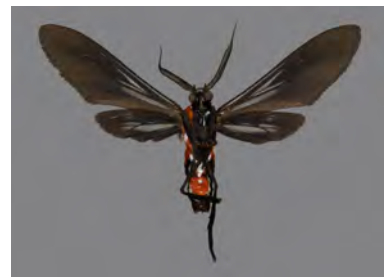
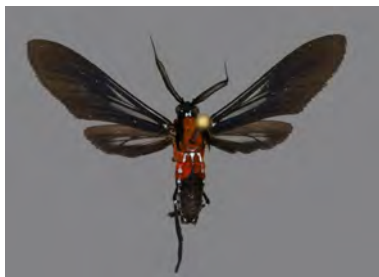
Mera, Pastaza, Ecuador, 1000m;
July 2021



AZ21-0349

Saurita vindonissa (*Druce, 1883*) ♂ 28mm

Tena, Napo, Ecuador, 650m; July
2021



AZ24-0093

Poecilosoma chrysis Hübner,
1823 ♂ 34mm

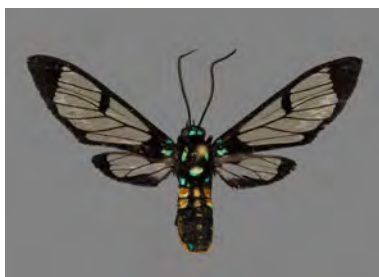
Cab. Yankuam, Rio Nangaritzza,
Zamora-Chinchiipe, Ecuador, 1000m;
August 2023



AZ21-0533

Cosmosoma xanthosticta
Hampson, 1898 ♀ 32mm

Chuchuvi, Esmeraldas, Ecuador,
1000m; July 2021



AZ22-0424

Cosmosoma xanthosticta
Hampson, 1898 ♂ 30mmChuchuvi, Esmeraldas, Ecuador,
1000m; August 2022

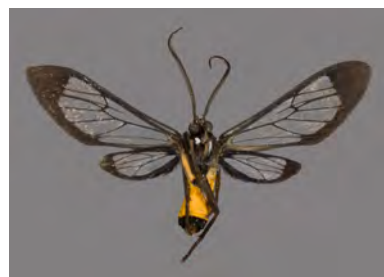
AZ22-0359

Cosmosoma angustimargo
Schaus, 1911 ♂ 32mmChuchuvi, Esmeraldas, Ecuador,
1000m; August 2022

AZ22-0539

Cosmosoma angustimargo
Schaus, 1911 ♀ 35mmMera, Pastaza, Ecuador, 1100m;
August 2022

AZ24-0073

Cosmosoma angustimargo
Schaus, 1911 ♂ 34mmCab. Yankuam, Rio Nangaritza,
Zamora-Chinchiipe, Ecuador, 1000m;
August 2023

AZ22-0400

Cosmosoma aff. apennina
Druce, 1905 ♂ 24mmChuchuvi, Esmeraldas, Ecuador,
1000m; August 2022

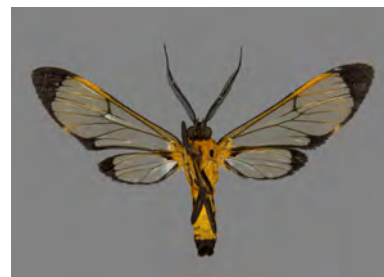
AZ22-0499

Cosmosoma apennina *Druce,*
1905 ♂ 26mmMera, Pastaza, Ecuador, 1100m;
August 2022

AZ22-0562

Cosmosoma apennina Druce,
1905 ♂ 25mm

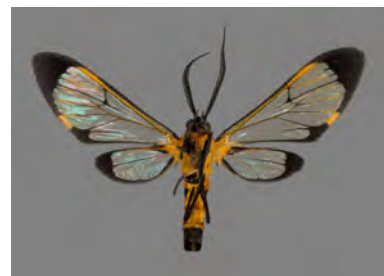
Mera, Pastaza, Ecuador, 1100m;
August 2022



AZ24-0076

Cosmosoma apennina Druce,
1905 ♂ 24mm

Via Nambija, San Carlos De Las
Minas, Zamora-Chinchiipe, Ecuador,
1700m; August 2023



AZ21-0353

Cosmosoma batesii (Butler,
1876) ♀ 31mm

Tena, Napo, Ecuador, 650m; July
2021



AZ22-0457

Cosmosoma batesii (Butler,
1876) ♂ 29mm

Mera, Pastaza, Ecuador, 1100m;
August 2022



AZ22-0526

Cosmosoma centralis (Walker,
1854) ♂ 30mm

Mera, Pastaza, Ecuador, 1100m;
August 2022



AZ24-0079

Cosmosoma centralis (Walker,
1854) ♂ 29mm

Rd. to R. Chumberiaza, Zurmi,
Zamora-Chinchiipe, Ecuador, 1600m;
August 2023



AZ21-0033

Cosmosoma dorsicineta Dognin,
1912 ♂ 26mm

Mera, Pastaza, Ecuador, 1000m;
July 2021



AZ22-0475

Cosmosoma dorsicineta Dognin,
1912 ♂ 28mm

Mera, Pastaza, Ecuador, 1100m;
August 2022



AZ24-0075

Cosmosoma cf. dorsicineta
Dognin, 1912 ♀ 28mm

Rd. to R. Chumberiaza, Zurmi,
Zamora-Chinchiipe, Ecuador, 1600m;
August 2023



AZ24-0086

Cosmosoma cf. dorsicineta
Dognin, 1912 ♀ 29mm

Via Nambija, San Carlos De Las
Minas, Zamora-Chinchiipe, Ecuador,
1700m; August 2023



AZ21-0358

Cosmosoma entella Druce, 1899
♀ 36mm

Chuchuvi, Esmeraldas, Ecuador,
1000m; July 2021



AZ21-0539

Cosmosoma entella Druce, 1899
♂ 33mm

Chuchuvi, Esmeraldas, Ecuador,
1000m; July 2021



AZ22-0411

Cosmosoma entella Druce, 1899
♂ 32mm

Chuchuvi, Esmeraldas, Ecuador,
1000m; August 2022



AZ22-0406

Cosmosoma galbana Schaus,
1912 ♂ 27mm

Chuchuvi, Esmeraldas, Ecuador,
1000m; August 2022



AZ21-0531

Cosmosoma parambae
Rothschild, 1911 ♂ 38mm

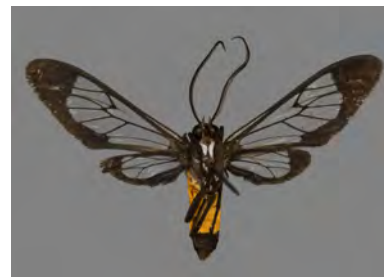
Chuchuvi, Esmeraldas, Ecuador,
1000m; July 2021



AZ21-0360

Cosmosoma aff. stibosticta
(Butler, 1876) ♂ 32mm

Chuchuvi, Esmeraldas, Ecuador,
1000m; July 2021



AZ21-0536

Cosmosoma aff. stibosticta
(Butler, 1876) ♂ 32mm

Chuchuvi, Esmeraldas, Ecuador,
1000m; July 2021



AZ22-0507

Cosmosoma stibosticta (Butler,
1876) ♂ 29mm

Mera, Pastaza, Ecuador, 1100m;
August 2022



AZ24-0084

Cosmosoma subflamma
(Walker, 1854) ♂ 37mm

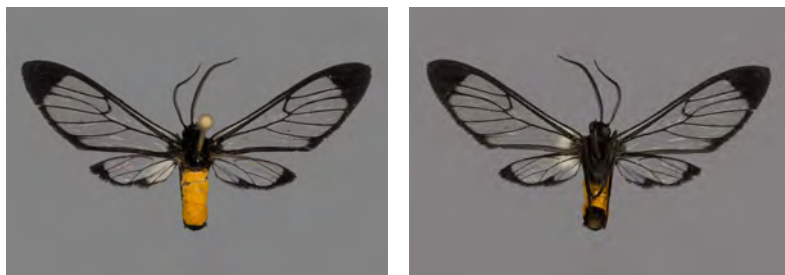
Namakuntza, Rio Nambija,
Zamora-Chinchipe, Ecuador, 1100m;
August 2023



AZ22-0464

(*Euchromiina*) ?spec. ♂ 27mm

Mera, Pastaza, Ecuador, 1100m;
August 2022



AZ22-0489

(*Euchromiina*) ?spec. ♂ 25mm

Mera, Pastaza, Ecuador, 1100m;
August 2022



AZ22-0571

(*Euchromiina*) ?spec. ♂ 25mm

Mera, Pastaza, Ecuador, 1100m;
August 2022



AZ24-0074

(*Euchromiina*) ?spec. ♀ 30mm

Cab. Yankuam, Rio Nangaritza,
Zamora-Chinchipe, Ecuador, 1000m;
August 2023

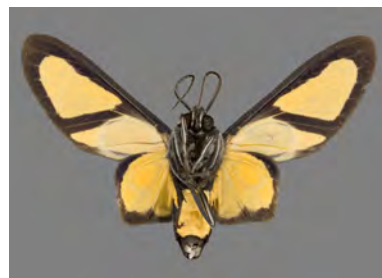


Subtribe *Phaegopterina* Kirby, 1892

AZ24-0154

Xanthoarctia pseudameoides
(Rothschild, 1909) ♂ 36mm

Cab. Yankuam, Rio Nangaritza,
Zamora-Chinchiipe, Ecuador, 1000m;
August 2023



AZ24-0173

Disconeura inexpectata
(Rothschild, 1910) ♂ 39mm

Cab. Yankuam, Rio Nangaritza,
Zamora-Chinchiipe, Ecuador, 1000m;
August 2023



AZ24-0131

Arctiarpia melanopasta cf.
mossi (Rothschild, 1922) ♀ 43mm

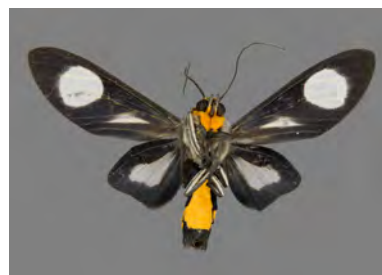
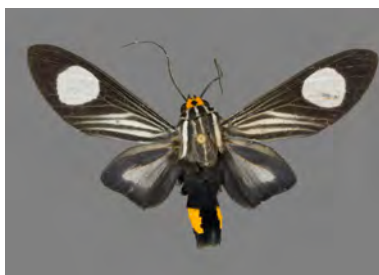
Cab. Yankuam, Rio Nangaritza,
Zamora-Chinchiipe, Ecuador, 1000m;
August 2023



AZ24-0159

Rhipha niveomaculata
(Rothschild, 1909) ♂ 37mm

Cab. Yankuam, Rio Nangaritza,
Zamora-Chinchiipe, Ecuador, 1000m;
August 2023



AZ24-0140

Rhipha fulminans (Rothschild,
1916) ♂ 49mm

Cab. Yankuam, Rio Nangaritza,
Zamora-Chinchiipe, Ecuador, 1000m;
August 2023



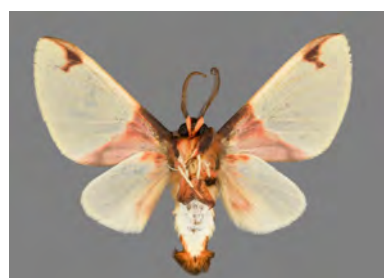
AZ24-0114

Pseudepimolis incisa
(Rothschild, 1909) ♂ 27mmCab. Yankuam, Rio Nangaritzza,
Zamora-Chinchiipe, Ecuador, 1000m;
August 2023

AZ24-0113

Pseudepimolis affinis
(Rothschild, 1909) ♂ 26mmCab. Yankuam, Rio Nangaritzza,
Zamora-Chinchiipe, Ecuador, 1000m;
August 2023

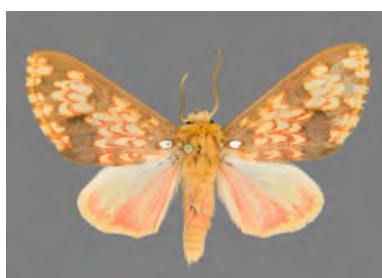
AZ24-0115

Pseudepimolis arcifera (Dognin,
1912) ♂ 32mmCab. Yankuam, Rio Nangaritzza,
Zamora-Chinchiipe, Ecuador, 1000m;
August 2023

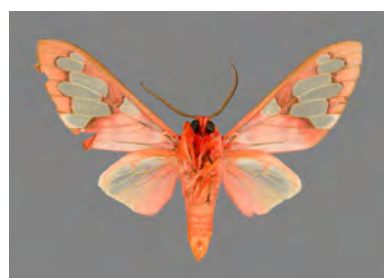
AZ24-0116

Echeta minerva (Schaus, 1915)
♂ 37mmVia Nambija, San Carlos De Las
Minas, Zamora-Chinchiipe, Ecuador,
1700m; August 2023

AZ24-0128

Echeta rubrireta (Dognin, 1906)
♂ 36mmVia Nambija, San Carlos De Las
Minas, Zamora-Chinchiipe, Ecuador,
1700m; August 2023

AZ24-0141

Echeta grandis (Druce, 1883)
♂ 56mmVia Nambija, San Carlos De Las
Minas, Zamora-Chinchiipe, Ecuador,
1700m; August 2023

AZ24-0126

Echeta cf. juno (Schaus, 1892)
♂ 36mmCab. Yankuam, Rio Nangaritzza,
Zamora-Chinchiipe, Ecuador, 1000m;
August 2023

AZ24-0127

Echeta aff. juno (Schaus, 1892)
♂ 40mmCab. Yankuam, Rio Nangaritzza,
Zamora-Chinchiipe, Ecuador, 1000m;
August 2023

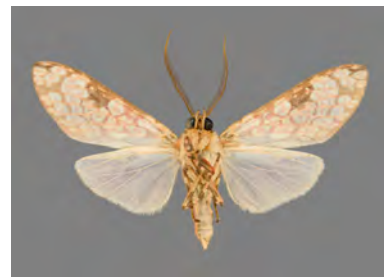
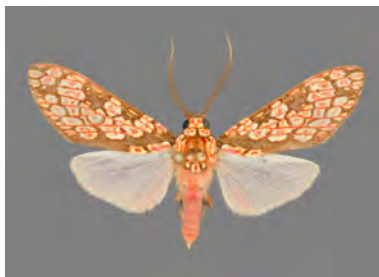
AZ22-0423

Cresera ilus (Cramer, [1776])
♂ 41mmChuchuvi, Esmeraldas, Ecuador,
1000m; August 2022

AZ24-0134

Cresera hieroglyphica (Schaus,
1905) ♂ 36mmCab. Yankuam, Rio Nangaritzza,
Zamora-Chinchiipe, Ecuador, 1000m;
August 2023

AZ24-0135

Cresera affinis (Rothschild,
1909) ♂ 33mmRd. to R. Chumberiaza, Zurmi,
Zamora-Chinchiipe, Ecuador, 1600m;
August 2023

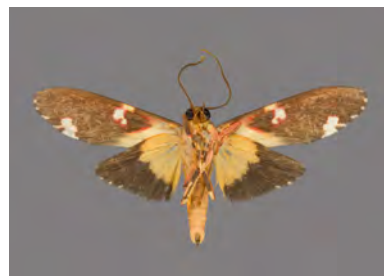
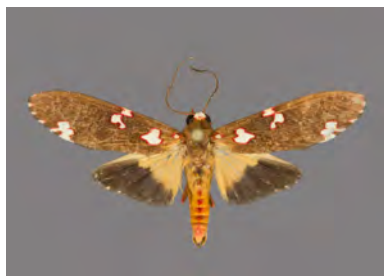
AZ22-0567

Hyponerita persimilis
Rothschild, 1909 ♂ 24mmMera, Pastaza, Ecuador, 1100m;
August 2022

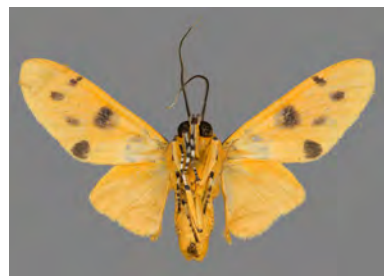
AZ22-0546

Coiffaitarctia ockendeni
(Rothschild, 1909) ♂ 37mmMera, Pastaza, Ecuador, 1100m;
August 2022

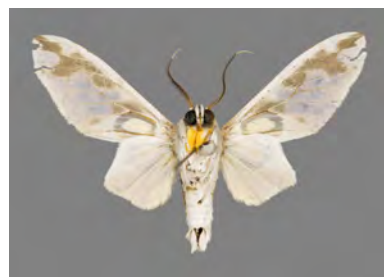
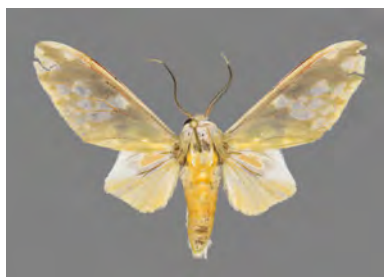
AZ24-0143

Coiffaitarctia ockendeni
(Rothschild, 1909) ♂ 31mmCab. Yankuam, Rio Nangaritzza,
Zamora-Chinchipe, Ecuador, 1000m;
August 2023

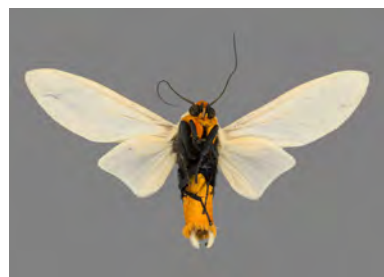
AZ21-0530

Emurena quinquepunctata
(Gaede, 1928) ♂ 35mmChuchuvi, Esmeraldas, Ecuador,
1000m; July 2021

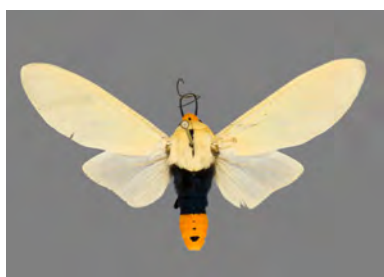
AZ21-0527

Castrica phalaenoides (Drury,
1773) ♂ 41mmChuchuvi, Esmeraldas, Ecuador,
1000m; July 2021

AZ24-0172

Selenarctia elissa (Schaus,
1892) ♂ 46mmCab. Yankuam, Rio Nangaritzza,
Zamora-Chinchipe, Ecuador, 1000m;
August 2023

AZ24-0176

Selenarctia pseudelissa (Dognin,
1902) ♂ 50mmRd. to R. Chumberiaza, Zurmi,
Zamora-Chinchipe, Ecuador, 1600m;
August 2023

AZ21-0516

Selenarctia cf. schausi
(Rothschild, 1916) ♂ 45mm

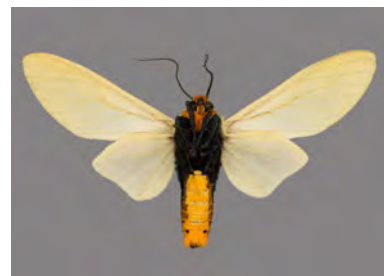
Chuchuvi, Esmeraldas, Ecuador,
1000m; July 2021



AZ22-0425

Selenarctia cf. schausi
(Rothschild, 1916) ♂ 50mm

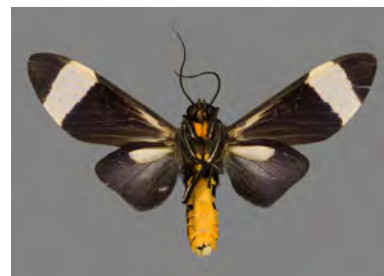
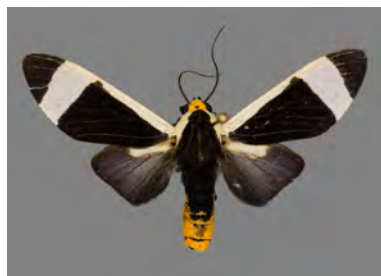
Chuchuvi, Esmeraldas, Ecuador,
1000m; August 2022



AZ21-0511

Pryteria colombiana
(Rothschild, 1933) ♂ 38mm

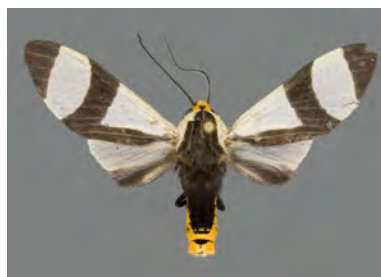
Chuchuvi, Esmeraldas, Ecuador,
1000m; July 2021



AZ24-0158

Pryteria a. alboatra (Rothschild,
1909) ♂ 36mm

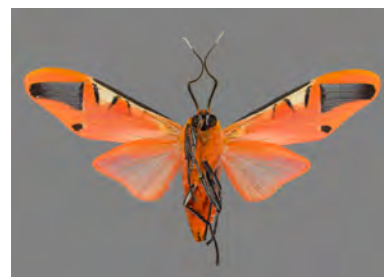
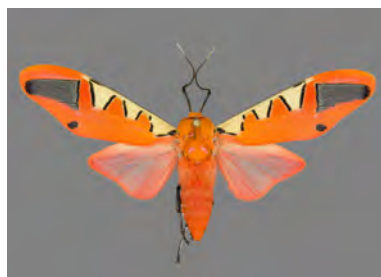
Cab. Yankuam, Rio Nangaritza,
Zamora-Chinchiipe, Ecuador, 1000m;
August 2023



AZ24-0174

Gorgonidia inversa (Rothschild,
1909) ♂ 50mm

Via Nambija, San Carlos De Las
Minas, Zamora-Chinchiipe, Ecuador,
1700m; August 2023



AZ24-0175

Gorgonidia inversa (Rothschild,
1909) ♀ 57mm

Via Nambija, San Carlos De Las
Minas, Zamora-Chinchiipe, Ecuador,
1700m; August 2023



AZ21-0518

Gorgonidia buckleyi (Druce,
1883) ♂ 50mmChuchuvi, Esmeraldas, Ecuador,
1000m; July 2021

AZ22-0377

Watsonidia reimana (Schaus,
1933) ♂ 34mmChuchuvi, Esmeraldas, Ecuador,
1000m; August 2022

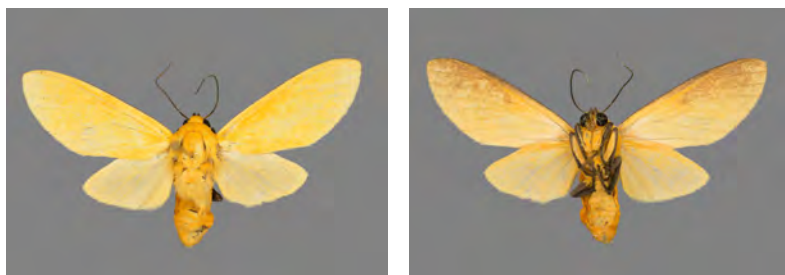
AZ21-0389

Watsonidia pardea (Schaus,
1933) ♀ 38mmChuchuvi, Esmeraldas, Ecuador,
1000m; July 2021

AZ21-0385

Sutonocrea duplicata (Gaede,
1928) ♂ 34mmChuchuvi, Esmeraldas, Ecuador,
1000m; July 2021

AZ21-0377

Sutonocrea fassli (Dognin,
1910) ♀ 34mmChuchuvi, Esmeraldas, Ecuador,
1000m; July 2021

AZ22-0421

Sutonocrea fassli (Dognin,
1910) ♂ 31mmChuchuvi, Esmeraldas, Ecuador,
1000m; August 2022

AZ22-0485

Parathyris cedonulli (Stoll, [1781]) ♀ 60mm

Chuchuvi, Esmeraldas, Ecuador, 1000m; August 2022



AZ24-0171

Parathyris cedonulli (Stoll, [1781]) ♂ 53mm

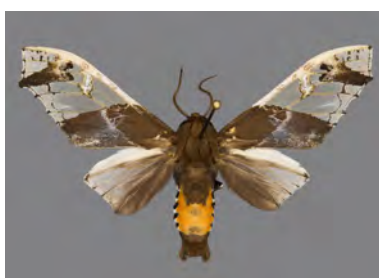
Cab. Yankuam, Rio Nangaritza, Zamora-Chinchi, Ecuador, 1000m; August 2023



AZ21-0394

Parathyris semivitrea (Joicey & Talbot, 1916) ♂ 51mm

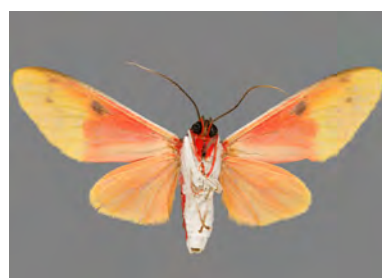
Tena, Napo, Ecuador, 650m; July 2021



AZ21-0512

Evius cochenouri Schaus, 1910 ♀ 40mm

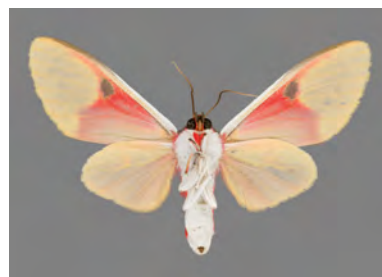
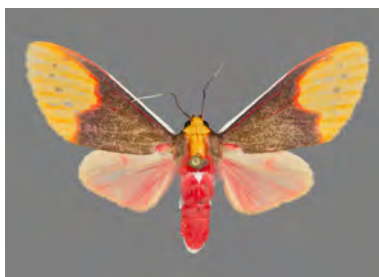
Chuchuvi, Esmeraldas, Ecuador, 1000m; July 2021



AZ24-0123

Evius albicoxae (Schaus, 1905) ♀ 40mm

Rd. to R. Chumberiaza, Zurmi, Zamora-Chinchi, Ecuador, 1600m; August 2023



AZ24-0124

Evius albicoxae (Schaus, 1905) ♂ 35mm

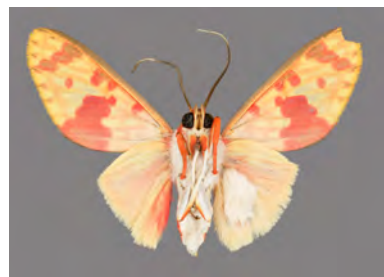
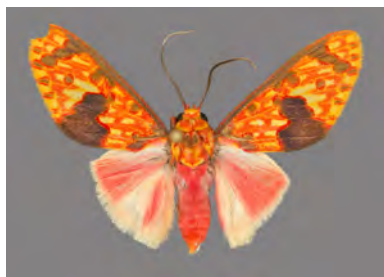
Cab. Yankuam, Rio Nangaritza, Zamora-Chinchi, Ecuador, 1000m; August 2023



AZ21-0396

Eriostepta roseireta Hampson,
1901 ♂ 31mm

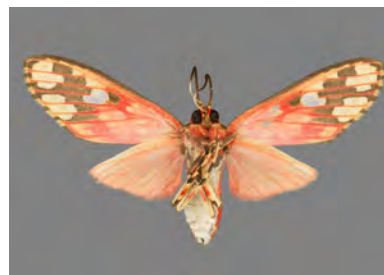
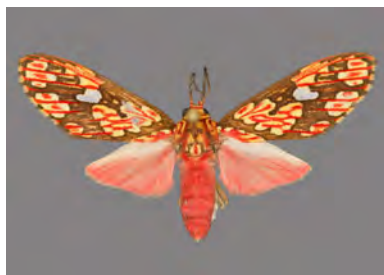
Tena, Napo, Ecuador, 650m; July
2021



AZ21-0393

Araeomolis rhodographa
peruviana (Rothschild, 1909)
♀ 32mm

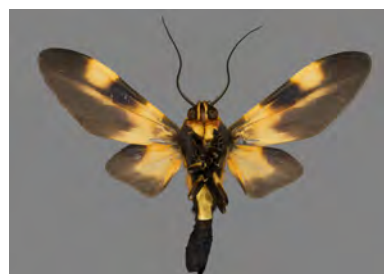
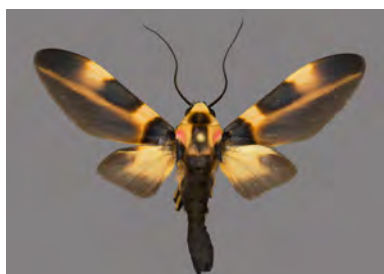
Chuchuvi, Esmeraldas, Ecuador,
1000m; July 2021



AZ21-0398

Cratoplastis rectiradia
(Hampson, 1901) ♂ 38mm

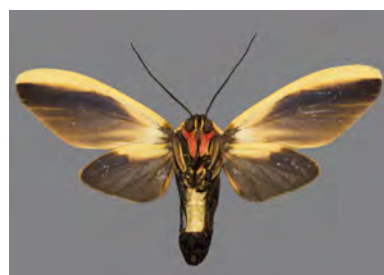
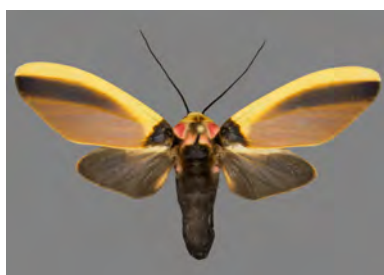
Tena, Napo, Ecuador, 650m; July
2021



AZ21-0378

Cratoplastis diluta Felder &
Rogenhofer, 1874 ♀ 47mm

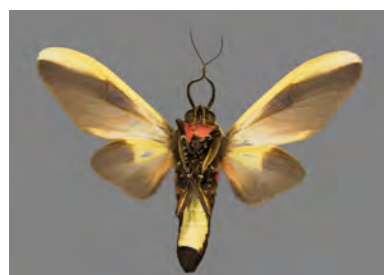
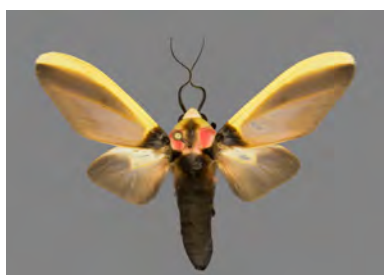
Chuchuvi, Esmeraldas, Ecuador,
1000m; July 2021



AZ22-0431

Cratoplastis diluta Felder &
Rogenhofer, 1874 ♂ 40mm

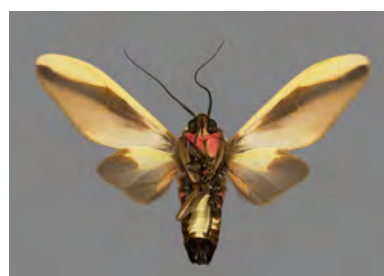
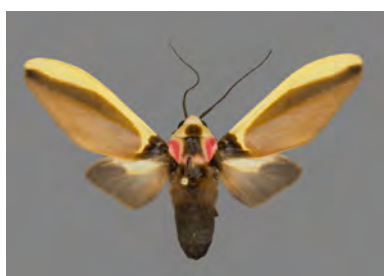
Chuchuvi, Esmeraldas, Ecuador,
1000m; August 2022



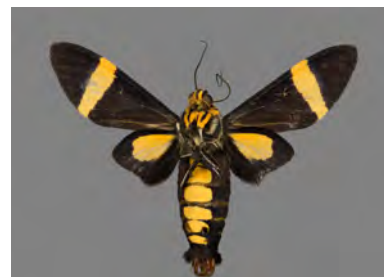
AZ22-0557

Cratoplastis diluta Felder &
Rogenhofer, 1874 ♂ 39mm

Mera, Pastaza, Ecuador, 1100m;
August 2022



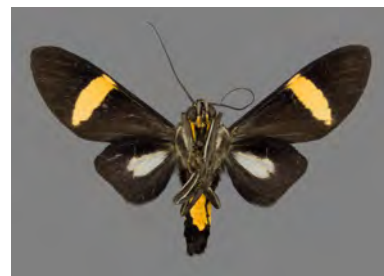
AZ21-0374

Ordishia fafner (Schaus, 1933)
♂ 40mmTena, Napo, Ecuador, 650m; July
2021

AZ21-0375

Ordishia fafner (Schaus, 1933)
♂ 41mmTena, Napo, Ecuador, 650m; July
2021

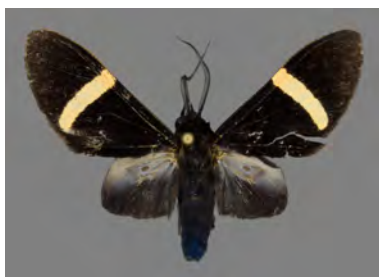
AZ24-0164

Ordishia klagesi (Rothschild,
1909) ♂ 36mmCab. Yankuam, Rio Nangaritzza,
Zamora-Chinchiipe, Ecuador, 1000m;
August 2023

AZ21-0300

Ernassa cf. sanguinolenta
(Cramer, [1779]) ♂ 43mmTena, Napo, Ecuador, 650m; July
2021

AZ24-0165

Melanarctia ockendeni
(Rothschild, 1909) ♂ 33mmVia Nambija, San Carlos De Las
Minas, Zamora-Chinchiipe, Ecuador,
1700m; August 2023

AZ22-0508

Eupseudosoma grandis
Rothschild, 1909 ♀ 50mmChuchuvi, Esmeraldas, Ecuador,
1000m; August 2022

AZ24-0166

Eupseudosoma i. involuta
(Sepp, [1855]) ♂ 28mmCab. Yankuam, Rio Nangaritzza,
Zamora-Chinchipe, Ecuador, 1000m;
August 2023

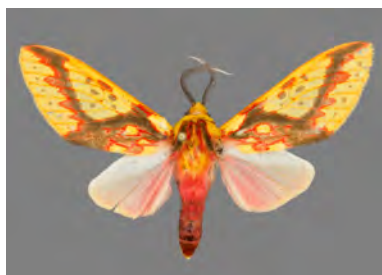
AZ21-0057

Symphlebia fulminans
(Rothschild, 1910) ♂ 44mmMera, Pastaza, Ecuador, 1000m;
July 2021

AZ21-0519

Symphlebia fulminans
(Rothschild, 1910) ♂ 39mmChuchuvi, Esmeraldas, Ecuador,
1000m; July 2021

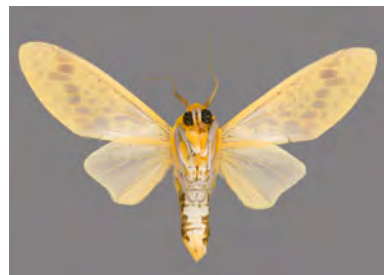
AZ24-0147

Symphlebia fulminans
(Rothschild, 1910) ♂ 42mmVia Nambija, San Carlos De Las
Minas, Zamora-Chinchipe, Ecuador,
1700m; August 2023

AZ24-0120

Symphlebia tetrodonta anodonta
Seitz, 1921 ♂ 43mmVia Nambija, San Carlos De Las
Minas, Zamora-Chinchipe, Ecuador,
1700m; August 2023

AZ24-0119

Symphlebia neja (Schaus, 1905)
♂ 45mmCab. Yankuam, Rio Nangaritzza,
Zamora-Chinchipe, Ecuador, 1000m;
August 2023

AZ24-0117

Symphlebia doncasteri
(Rothschild, 1910) ♂ 48mm

Rd. to R. Chumberiaza, Zurmi,
Zamora-Chinchiipe, Ecuador, 1600m;
August 2023



AZ22-0528

Symphlebia citrarius (Dognin,
1889) ♂ 42mm

Mera, Pastaza, Ecuador, 1100m;
August 2022



AZ24-0122

Symphlebia citrarius (Dognin,
1889) ♂ 43mm

Cab. Yankuam, Rio Nangaritzza,
Zamora-Chinchiipe, Ecuador, 1000m;
August 2023



AZ24-0125

Symphlebia suanus (Druce,
1902) ♂ 43mm

Cab. Yankuam, Rio Nangaritzza,
Zamora-Chinchiipe, Ecuador, 1000m;
August 2023



AZ24-0142

Symphlebia suanus (Druce,
1902) ♂ 44mm

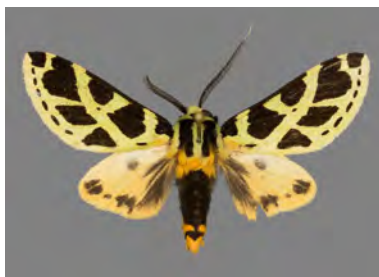
Cab. Yankuam, Rio Nangaritzza,
Zamora-Chinchiipe, Ecuador, 1000m;
August 2023



AZ21-0387

Symphlebia t. tessellata
(Schaus, 1910) ♂ 38mm

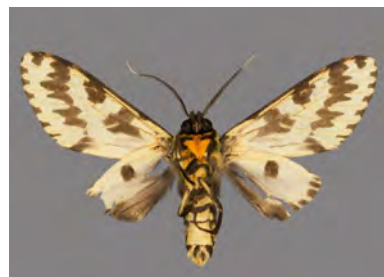
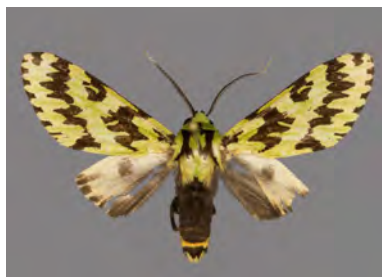
Chuchuvi, Esmeraldas, Ecuador,
1000m; July 2021



AZ21-0343

Symphlebia muscosa (Schaus, 1910) ♂ 37mm

Tena, Napo, Ecuador, 650m; July 2021



AZ22-0404

Symphlebia perflua rosea (Schaus, 1894) ♂ 39mm

Chuchuvi, Esmeraldas, Ecuador, 1000m; August 2022



AZ22-0522

Symphlebia perflua rosea (Schaus, 1894) ♀ 46mm

Mera, Pastaza, Ecuador, 1100m; August 2022



AZ24-0130

Symphlebia perflua rosea (Schaus, 1894) ♂ 38mm

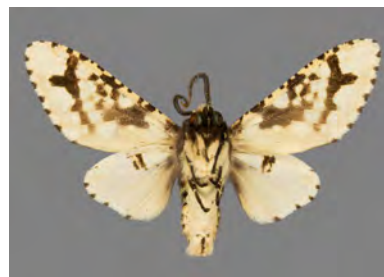
Via Nambija, San Carlos De Las Minas, Zamora-Chinchiipe, Ecuador, 1700m; August 2023



AZ22-0402

Symphlebia punctata (Rothschild, 1909) ♂ 34mm

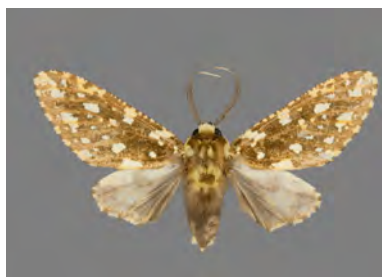
Chuchuvi, Esmeraldas, Ecuador, 1000m; August 2022



AZ24-0121

Symphlebia punctata (Rothschild, 1909) ♂ 38mm

Namakuntza, Rio Nambija, Zamora-Chinchiipe, Ecuador, 1100m; August 2023



AZ24-0193

Symphlebia punctata
(Rothschild, 1909) ♀ 44mm

Rd. to R. Chumberiaza, Zurmi,
Zamora-Chinchi, Ecuador, 1600m;
August 2023



AZ24-0118

Amaxia bella (Schaus, 1905)
♂ 32mm

Cab. Yankuam, Rio Nangaritzza,
Zamora-Chinchi, Ecuador, 1000m;
August 2023



AZ22-0517

Amaxia flavicollis (Rothschild,
1909) ♂ 34mm

Mera, Pastaza, Ecuador, 1100m;
August 2022



AZ22-0519

Amaxia violacea Reich, 1933
♂ 34mm

Mera, Pastaza, Ecuador, 1100m;
August 2022



AZ24-0111

Amaxia apyga Hampson, 1901
♂ 32mm

Cab. Yankuam, Rio Nangaritzza,
Zamora-Chinchi, Ecuador, 1000m;
August 2023



AZ22-0516

Amaxia cf. pseudodyuna
Rothschild, 1922 ♂ 31mm

Mera, Pastaza, Ecuador, 1100m;
August 2022

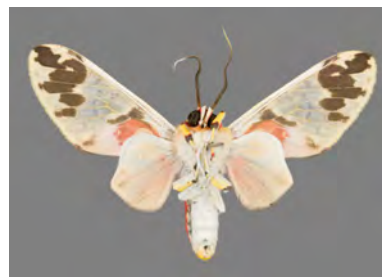


AZ24-0112

Amaxia beata (Dognin, 1909)

♂ 36mm

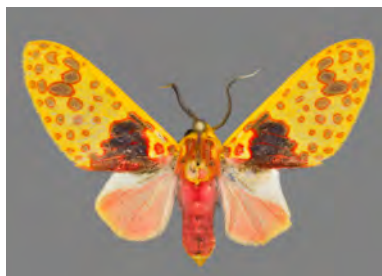
Cab. Yankuam, Rio Nangaritza,
Zamora-Chinchiipe, Ecuador, 1000m;
August 2023



AZ22-0376

Amaxia cf. perignita Toulgoët,
1991 ♂ 32mm

Chuchuvi, Esmeraldas, Ecuador,
1000m; August 2022

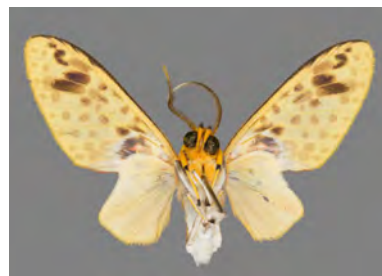
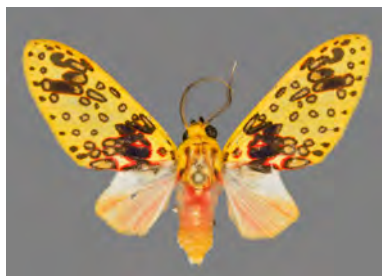


AZ22-0378

Amaxia aurata Toulgoët, 1991

♂ 31mm

Chuchuvi, Esmeraldas, Ecuador,
1000m; August 2022



AZ21-0525

Amaxia c. chaon (Druce, 1883)

♀ 38mm

Chuchuvi, Esmeraldas, Ecuador,
1000m; July 2021



AZ22-0538

Astralactia venatorum
Toulgoët, 1991 ♂ 36mm

Mera, Pastaza, Ecuador, 1100m;
August 2022

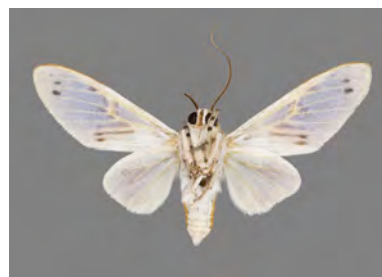
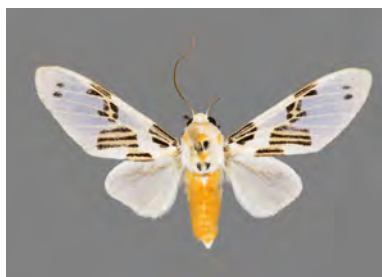


AZ21-0376

Idalus daga (Dognin, 1891)

♂ 32mm

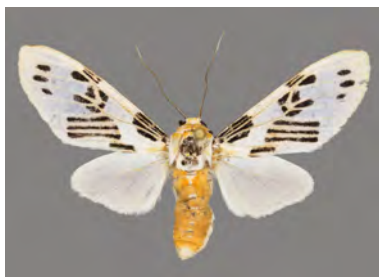
Tena, Napo, Ecuador, 650m; July
2021



AZ22-0183

Idalus daga (Dognin, 1891)

♀ 37mm

Chuchuvi, Esmeraldas, Ecuador,
1000m; August 2022

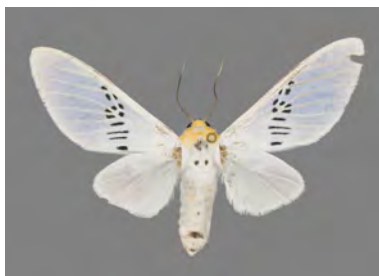
AZ24-0163

Idalus daga (Dognin, 1891)

♂ 30mm

Cab. Yankuam, Rio Nangaritzza,
Zamora-Chinchiipe, Ecuador, 1000m;
August 2023

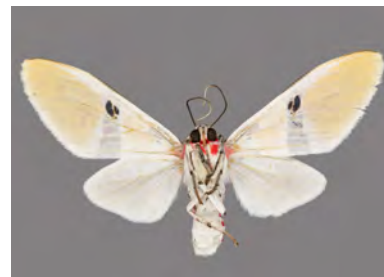
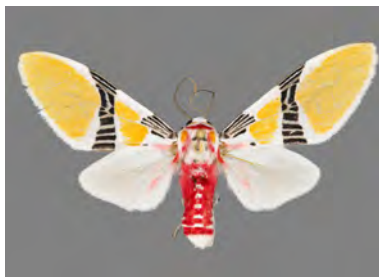
AZ22-0184

Idalus fasciipuncta (Rothschild,
1909) ♀ 41mmP-to Misahualli, Napo, Ecuador,
550m; August 2022

AZ21-0380

Idalus iragorri (Dognin, 1902)

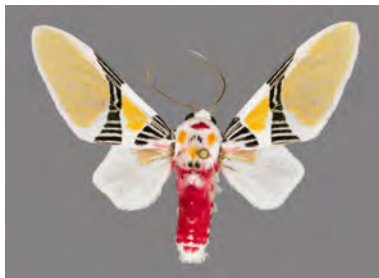
♀ 46mm

Chuchuvi, Esmeraldas, Ecuador,
1000m; July 2021

AZ22-0426

Idalus iragorri (Dognin, 1902)

♂ 38mm

Chuchuvi, Esmeraldas, Ecuador,
1000m; August 2022

AZ24-0161

Idalus cf. iragorri (Dognin,
1902) ♂ 39mmVia Nambija, San Carlos De Las
Minas, Zamora-Chinchiipe, Ecuador,
1700m; August 2023

AZ22-0545

Idalus herois Schaus, 1889

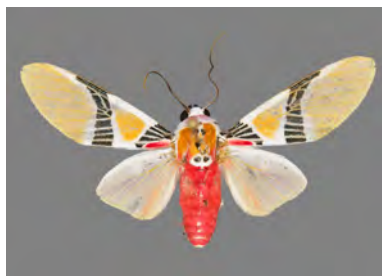
♂ 39mm

Mera, Pastaza, Ecuador, 1100m;
August 2022

AZ21-0514

Idalus carinosa (Schaus, 1905)

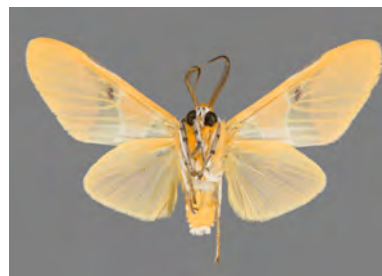
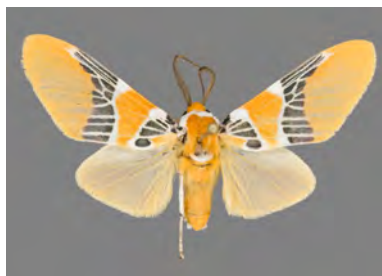
♂ 35mm

Chuchuvi, Esmeraldas, Ecuador,
1000m; July 2021

AZ24-0160

Idalus ochreatea (Schaus, 1905)

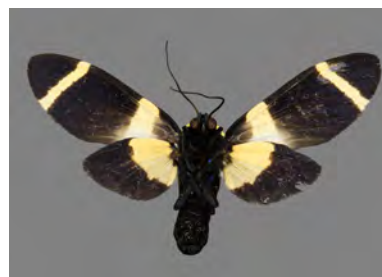
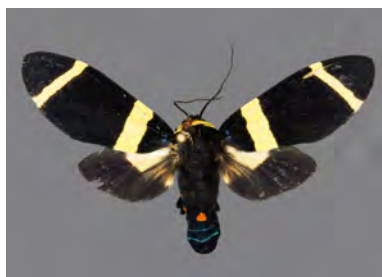
♂ 33mm

Via Nambija, San Carlos De Las
Minas, Zamora-Chinchiipe, Ecuador,
1700m; August 2023

AZ21-0027

Viviennea moma (Schaus, 1905)

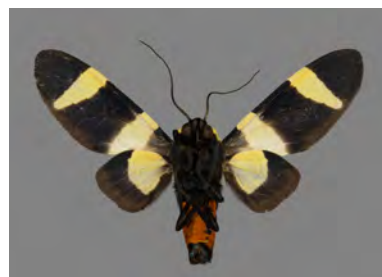
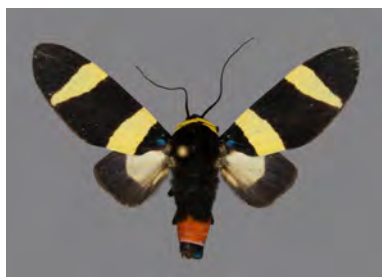
♀ 50mm

Mera, Pastaza, Ecuador, 1000m;
July 2021

AZ21-0118

Viviennea moma (Schaus, 1905)

♂ 34mm

Mera, Pastaza, Ecuador, 1000m;
July 2021

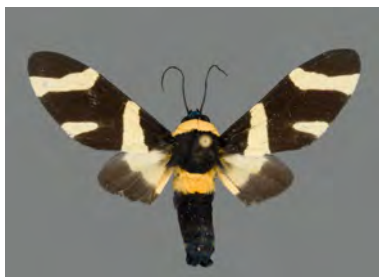
AZ21-0528

Viviennea momyra (Gaede,
1928) ♂ 38mmChuchuvi, Esmeraldas, Ecuador,
1000m; July 2021

AZ24-0157

Viviennea zonana (Schaus,
1905) ♂ 35mm

Cab. Yankuam, Rio Nangaritzza,
Zamora-Chinchipec, Ecuador, 1000m;
August 2023



AZ22-0532

Viviennea griseonitens
(Rothschild, 1909) ♂ 42mm

Mera, Pastaza, Ecuador, 1100m;
August 2022



AZ21-0526

Ormetica cf. collateralis
(Hampson, 1901) ♂ 35mm

Chuchuvi, Esmeraldas, Ecuador,
1000m; July 2021



AZ21-0054

Ormetica aff. rosenbergi
(Rothschild, 1909) ♀ 42mm

Mera, Pastaza, Ecuador, 1000m;
July 2021



AZ22-0553

Ormetica aff. rosenbergi
(Rothschild, 1909) ♂ 37mm

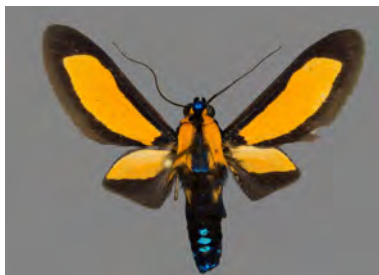
Mera, Pastaza, Ecuador, 1100m;
August 2022



AZ21-0324

Ormetica pratti (Druce, 1900)
♂ 34mm

Chuchuvi, Esmeraldas, Ecuador,
1000m; July 2021



AZ21-0059

Ormetica sypilus (Cramer,
[1777]) ♂ 31mmMera, Pastaza, Ecuador, 1000m;
July 2021

AZ21-0369

Ormetica sypilus (Cramer,
[1777]) ♀ 42mmTena, Napo, Ecuador, 650m; July
2021

AZ22-0540

Ormetica sypilus (Cramer,
[1777]) ♂ 30mmMera, Pastaza, Ecuador, 1100m;
August 2022

AZ21-0386

Ormetica cf. gerhilda (Schaus,
1933) ♀ 41mmChuchuvi, Esmeraldas, Ecuador,
1000m; July 2021

AZ24-0156

Ormetica packardi (Butler,
1876) ♂ 31mmCab. Yankuam, Rio Nangaritzza,
Zamora-Chinchipe, Ecuador, 1000m;
August 2023

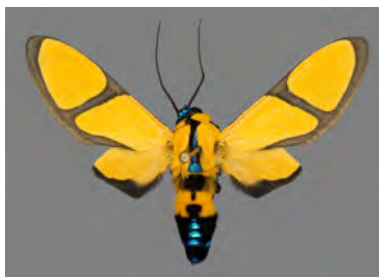
AZ22-0530

Ormetica ameoides (Butler,
1876) ♀ 47mmMera, Pastaza, Ecuador, 1100m;
August 2022

AZ22-0531

Ormetica ameoides (Butler, 1876) ♂ 38mm

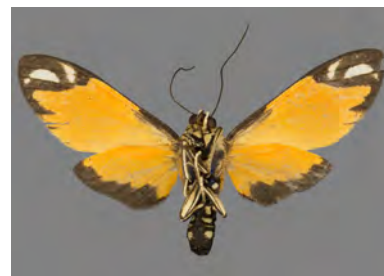
Mera, Pastaza, Ecuador, 1100m; August 2022



AZ21-0392

Ormetica zenzeroides (Butler, 1877) ♀ 36mm

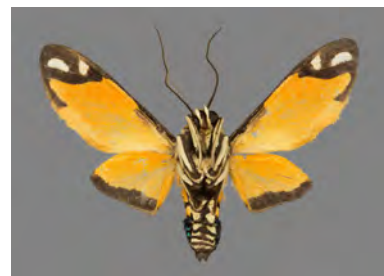
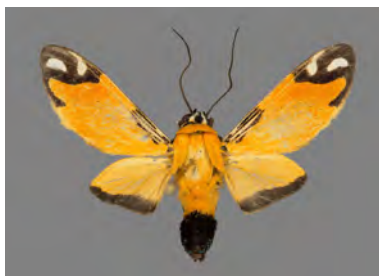
Tena, Napo, Ecuador, 650m; July 2021



AZ21-0395

Ormetica zenzeroides (Butler, 1877) ♂ 29mm

Tena, Napo, Ecuador, 650m; July 2021



AZ21-0367

Ormetica c. contraria (Walker, 1854) ♀ 36mm

Tena, Napo, Ecuador, 650m; July 2021



AZ22-0512

Ormetica c. contraria (Walker, 1854) ♂ 25mm

P-to Misahualli, Napo, Ecuador, 550m; August 2022



AZ24-0155

Ormetica c. contraria (Walker, 1854) ♂ 28mm

Cab. Yankuam, Rio Nangaritzza, Zamora-Chinchiipe, Ecuador, 1000m; August 2023



AZ21-0327

Himerarctia griseipennis
(Rothschild, 1909) ♂ 58mm

Tena, Napo, Ecuador, 650m; July
2021



AZ21-0108

Robinsonia dewitzi Gundlach,
1881 ♂ 46mm

Mera, Pastaza, Ecuador, 1000m;
July 2021



AZ21-0388

Robinsonia multimaculata
Rothschild, 1909 ♀ 49mm

Chuchuvi, Esmeraldas, Ecuador,
1000m; July 2021



AZ24-0169

Robinsonia klagesi Rothschild,
1910 ♂ 37mm

Cab. Yankuam, Rio Nangaritzza,
Zamora-Chinchiipe, Ecuador, 1000m;
August 2023



AZ22-0433

Kirrostopla metaxantha (Schaus,
1905) ♂ 27mm

Chuchuvi, Esmeraldas, Ecuador,
1000m; August 2022



AZ21-0399

Trichromia onytes (Cramer,
[1777]) ♀ 27mm

Tena, Napo, Ecuador, 650m; July
2021



AZ24-0144

Trichromia cf. onytes (Cramer, [1777]) ♀ 29mm

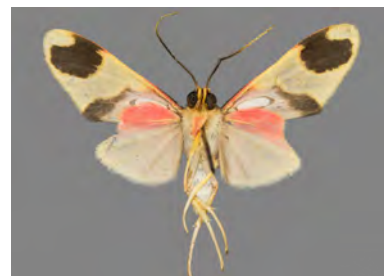
Rd. to R. Chumberiaza, Zurmi, Zamora-Chinchipec, Ecuador, 1600m; August 2023



AZ22-0401

Trichromia cf. androconiata (Rothschild, 1909) ♂ 25mm

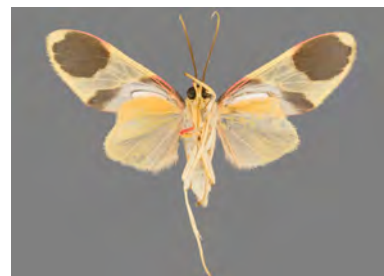
Chuchuvi, Esmeraldas, Ecuador, 1000m; August 2022



AZ24-0151

Trichromia cf. androconiata (Rothschild, 1909) ♂ 28mm

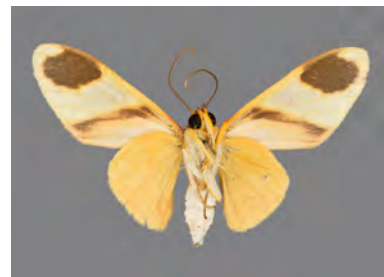
Namakuntza, Rio Nambija, Zamora-Chinchipec, Ecuador, 1100m; August 2023



AZ21-0379

Trichromia metapyrioides (Rothschild, 1916) ♂ 36mm

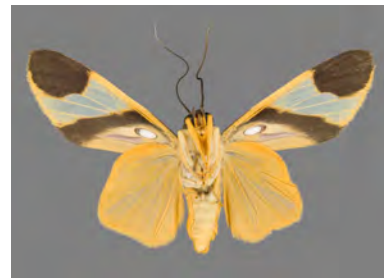
Chuchuvi, Esmeraldas, Ecuador, 1000m; July 2021



AZ24-0150

Trichromia cf. viola (Dognin, 1909) ♂ 32mm

Via Nambija, San Carlos De Las Minas, Zamora-Chinchipec, Ecuador, 1700m; August 2023



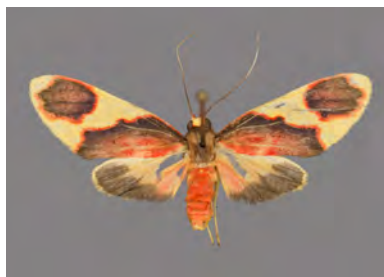
AZ21-0025

Trichromia declivis (Schaus, 1905) ♂ 31mm

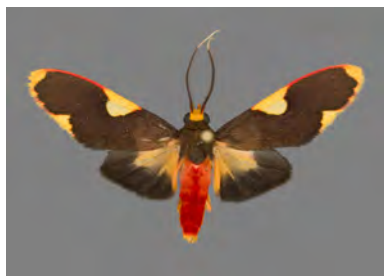
Mera, Pastaza, Ecuador, 1000m; July 2021



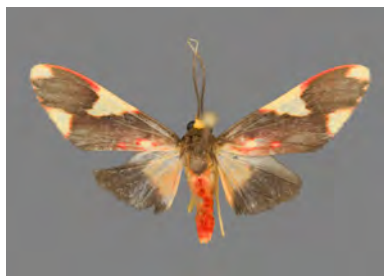
AZ21-0515

Trichromia cyclopera
(Hampson, 1905) ♀ 29mmChuchuvi, Esmeraldas, Ecuador,
1000m; July 2021

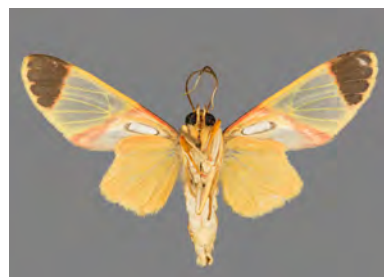
AZ24-0148

Trichromia cyclopera
(Hampson, 1905) ♂ 29mmNamakuntza, Rio Nambija,
Zamora-Chinchiipe, Ecuador, 1100m;
August 2023

AZ24-0149

Trichromia cyclopera
(Hampson, 1905) ♂ 26mmVia Nambija, San Carlos De Las
Minas, Zamora-Chinchiipe, Ecuador,
1700m; August 2023

AZ21-0373

Trichromia albicollis (Hampson,
1905) ♂ 27mmTena, Napo, Ecuador, 650m; July
2021

AZ24-0145

Trichromia albicollis (Hampson,
1905) ♂ 26mmCab. Yankuam, Rio Nangaritzza,
Zamora-Chinchiipe, Ecuador, 1000m;
August 2023

AZ24-0152

Trichromia cf. supracoccinea
Vincent & Laguerre, 2017
♂ 29mmCab. Yankuam, Rio Nangaritzza,
Zamora-Chinchiipe, Ecuador, 1000m;
August 2023

AZ22-0561

Trichromia ?spec. ♂ 27mm

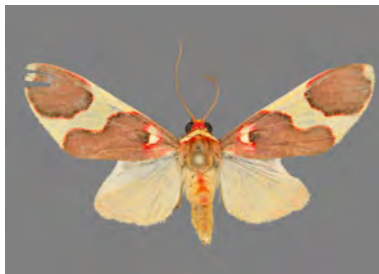
Mera, Pastaza, Ecuador, 1100m;
August 2022



AZ24-0153

Trichromia spec. ♂ 31mm

Cab. Yankuam, Rio Nangaritzza,
Zamora-Chinchiipe, Ecuador, 1000m;
August 2023



AZ22-0523

Onythes pallidicosta Walker,
1855 ♂ 41mm

Mera, Pastaza, Ecuador, 1100m;
August 2022



AZ21-0371

Cissura plumbea excelsior
Rothschild, 1933 ♂ 33mm

Tena, Napo, Ecuador, 650m; July
2021



AZ21-0372

Cissura plumbea excelsior
Rothschild, 1933 ♀ 35mm

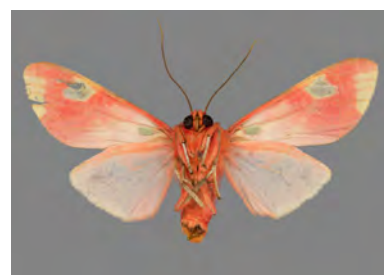
Tena, Napo, Ecuador, 650m; July
2021



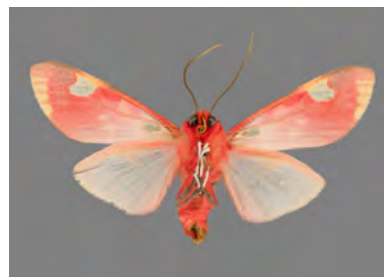
AZ22-0518

Melese peruviana (*Rothschild,*
1909) ♂ 38mm

Mera, Pastaza, Ecuador, 1100m;
August 2022



AZ24-0137

Melese peruviana (Rothschild, 1909) ♂ 37mmRd. to R. Chumberiaza, Zurmi,
Zamora-Chinchiipe, Ecuador, 1600m;
August 2023

AZ21-0529

Melese cf. intensa (Rothschild, 1910) ♂ 38mmChuchuvi, Esmeraldas, Ecuador,
1000m; July 2021

AZ22-0510

Melese cf. intensa (Rothschild, 1910) ♂ 38mmChuchuvi, Esmeraldas, Ecuador,
1000m; August 2022

AZ22-0511

Melese cf. intensa (Rothschild, 1910) ♀ 44mmP-to Misahualli, Napo, Ecuador,
550m; August 2022

AZ24-0132

Melese cf. intensa (Rothschild, 1910) ♀ 39mmCab. Yankuam, Rio Nangaritza,
Zamora-Chinchiipe, Ecuador, 1000m;
August 2023

AZ22-0525

Melese flavimaculata Dognin, 1899 ♂ 29mmMera, Pastaza, Ecuador, 1100m;
August 2022

AZ24-0138

Melese flavimaculata Dognin,
1899 ♀ 33mm

Cab. Yankuam, Rio Nangaritza,
Zamora-Chinchipec, Ecuador, 1000m;
August 2023



AZ24-0139

Melese incertus (Walker, 1855)
♀ 35mm

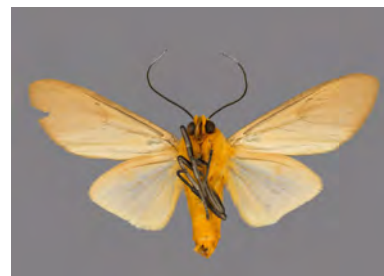
Cab. Yankuam, Rio Nangaritza,
Zamora-Chinchipec, Ecuador, 1000m;
August 2023



AZ22-0560

Melese v. cf. veneta (Dognin,
1901) ♂ 40mm

Mera, Pastaza, Ecuador, 1100m;
August 2022



AZ21-0034

Bertholdia fumida Schaus, 1910
♂ 40mm

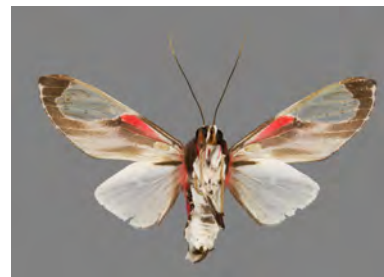
Mera, Pastaza, Ecuador, 1000m;
July 2021



AZ21-0520

Bertholdia c. crocea Schaus,
1910 ♂ 41mm

Chuchuvi, Esmeraldas, Ecuador,
1000m; July 2021



AZ24-0179

Bertholdia flavidorsata
Hampson, 1901 ♂ 42mm

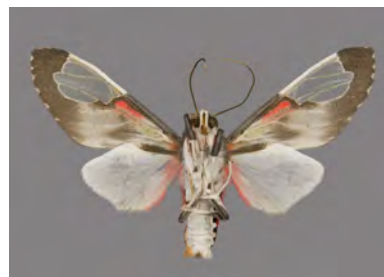
Cab. Yankuam, Rio Nangaritza,
Zamora-Chinchipec, Ecuador, 1000m;
August 2023



AZ21-0056

Bertholdia s. cf. specularis
(Herrich-Schäffer, [1853])

♂ 37mm

Mera, Pastaza, Ecuador, 1000m;
July 2021

AZ22-0559

Opharus aff. procroides Walker,
1855 ♀ 47mmMera, Pastaza, Ecuador, 1100m;
August 2022

AZ24-0195

Opharus procroides Walker,
1855 ♂ 46mmRd. to R. Chumberiaza, Zurmi,
Zamora-Chinchiipe, Ecuador, 1600m;
August 2023

AZ24-0197

Opharus procroides Walker,
1855 ♀ 48mmCab. Yankuam, Rio Nangaritzza,
Zamora-Chinchiipe, Ecuador, 1000m;
August 2023

AZ24-0196

Opharus consimilis Hampson,
1901 ♀ 55mmVia Nambija, San Carlos De Las
Minas, Zamora-Chinchiipe, Ecuador,
1700m; August 2023

AZ24-0192

Opharus basalis Walker, 1856
♀ 51mmRd. to R. Chumberiaza, Zurmi,
Zamora-Chinchiipe, Ecuador, 1600m;
August 2023

AZ24-0167

Hyperthaema hoffmannsi
Rothschild, 1909 ♂ 32mm

Cab. Yankuam, Rio Nangaritzza,
Zamora-Chinchiipe, Ecuador, 1000m;
August 2023



AZ24-0136

Baritius cyclozonata (Hampson,
1901) ♂ 27mm

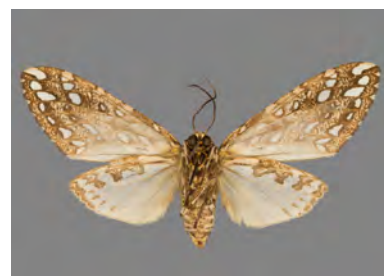
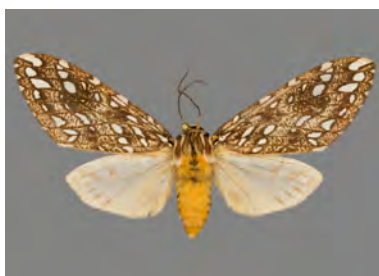
Cab. Yankuam, Rio Nangaritzza,
Zamora-Chinchiipe, Ecuador, 1000m;
August 2023



AZ22-0527

Lophocampa atriceps (Hampson,
1901) ♀ 59mm

Mera, Pastaza, Ecuador, 1100m;
August 2022



AZ24-0178

Lophocampa flavodorsata
Vincent & Laguerre, 2013
♂ 47mm

Via Nambija, San Carlos De Las
Minas, Zamora-Chinchiipe, Ecuador,
1700m; August 2023



AZ24-0189

Lophocampa cf. annulosa
(Walker, 1855) ♂ 33mm

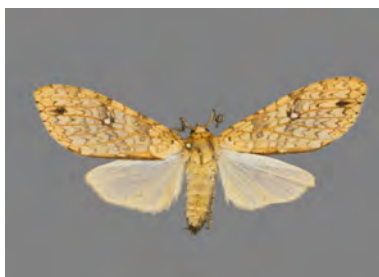
Cab. Yankuam, Rio Nangaritzza,
Zamora-Chinchiipe, Ecuador, 1000m;
August 2023



AZ22-0435

Lophocampa cf. alsus (Cramer,
[1777]) ♀ 44mm

Chuchuvi, Esmeraldas, Ecuador,
1000m; August 2022



AZ22-0408

Lophocampa cf. modesta Kirby,
1892 ♀ 40mm

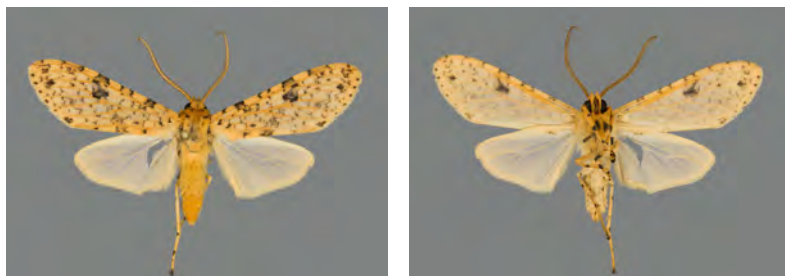
Chuchuvi, Esmeraldas, Ecuador,
1000m; August 2022



AZ22-0542

Lophocampa endrolepia
(Dognin, 1908) ♂ 37mm

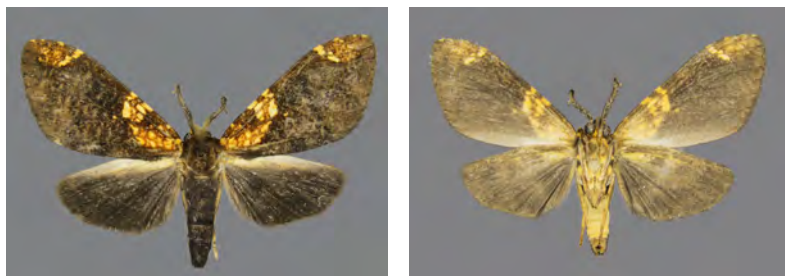
Mera, Pastaza, Ecuador, 1100m;
August 2022



AZ21-0019

Ochrodota atra Rothschild, 1909
♂ 26mm

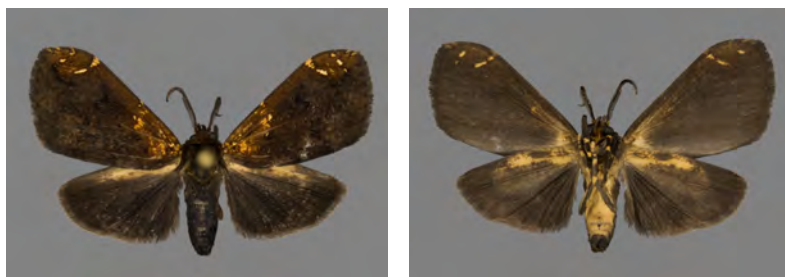
Mera, Pastaza, Ecuador, 1000m;
July 2021



AZ22-0564

Ochrodota atra Rothschild, 1909
♂ 24mm

Mera, Pastaza, Ecuador, 1100m;
August 2022



AZ21-0517

Halysidota intensa (Rothschild,
1909) ♀ 52mm

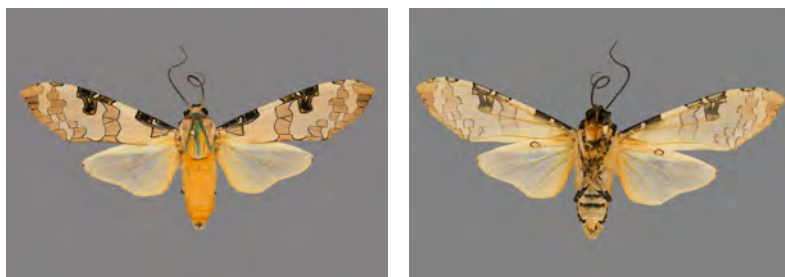
Chuchuvi, Esmeraldas, Ecuador,
1000m; July 2021



AZ22-0505

Halysidota intensa (Rothschild,
1909) ♂ 60mm

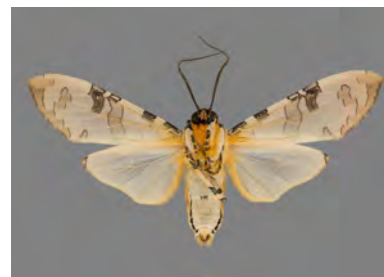
Chuchuvi, Esmeraldas, Ecuador,
1000m; August 2022



AZ24-0185

Halysidota interlineata (Walker, 1855) ♂ 52mm

Rd. to R. Chumberiaza, Zurmi, Zamora-Chinchi, Ecuador, 1600m; August 2023



AZ24-0180

Praemastus albipuncta (Hampson, 1901) ♀ 79mm

Via Nambija, San Carlos De Las Minas, Zamora-Chinchi, Ecuador, 1700m; August 2023



AZ24-0182

Amastus collaris (Herrich-Schäffer, [1853]) ♂ 75mm

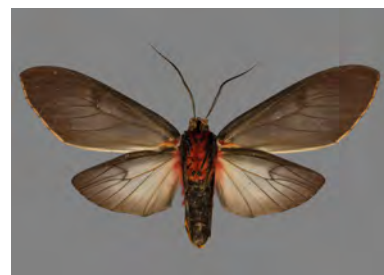
Namakuntza, Rio Nambija, Zamora-Chinchi, Ecuador, 1100m; August 2023



AZ21-0333

Amastus episcotosia Dognin, 1901 ♀ 100mm

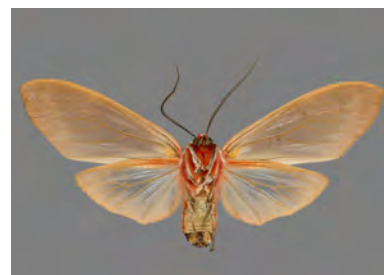
Chuchuvi, Esmeraldas, Ecuador, 1000m; July 2021



AZ24-0181

Amastus coccinator (Schaus, 1901) ♀ 79mm

Via Nambija, San Carlos De Las Minas, Zamora-Chinchi, Ecuador, 1700m; August 2023



AZ21-0339

Amastus aconia rumina Druce, 1906 ♂ 70mm

Chuchuvi, Esmeraldas, Ecuador, 1000m; July 2021



AZ22-0486*Amastus aconia rumina* Druce,
1906 ♀ 72mmChuchuvi, Esmeraldas, Ecuador,
1000m; August 2022**AZ21-0332***Ammalo helops* (Cramer,
[1775]) ♂ 67mmTena, Napo, Ecuador, 650m; July
2021**AZ21-0336***Ammalo helops* (Cramer,
[1775]) ♂ 72mmChuchuvi, Esmeraldas, Ecuador,
1000m; July 2021**AZ21-0513***Elysius conspersus* Walker,
1855 ♂ 58mmChuchuvi, Esmeraldas, Ecuador,
1000m; July 2021**AZ24-0200***Elysius terraoides* Rothschild,
1909 ♂ 57mmVia Nambija, San Carlos De Las
Minas, Zamora-Chinchiipe, Ecuador,
1700m; August 2023**AZ24-0186***Elysius disciplaga* (Walker,
1856) ♀ 49mmCab. Yankuam, Rio Nangaritza,
Zamora-Chinchiipe, Ecuador, 1000m;
August 2023

AZ21-0334

Elysius superba (Druce, 1884)
♀ 88mm

Chuchuvi, Esmeraldas, Ecuador,
1000m; July 2021



AZ21-0331

Mazaeras magnifica
(Rothschild, 1909) ♂ 100mm

Tena, Napo, Ecuador, 650m; July
2021



AZ21-0112

Mazaeras conferta Walker,
1855 ♂ 57mm

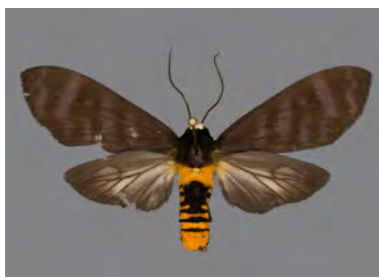
Mera, Pastaza, Ecuador, 1000m;
July 2021



AZ21-0338

Pachydota drucei Rothschild,
1909 ♀ 56mm

Chuchuvi, Esmeraldas, Ecuador,
1000m; July 2021



AZ22-0509

Pachydota drucei Rothschild,
1909 ♂ 58mm

Chuchuvi, Esmeraldas, Ecuador,
1000m; August 2022



AZ21-0102

Pachydota cf. peruviana
Rothschild, 1909 ♀ 52mm

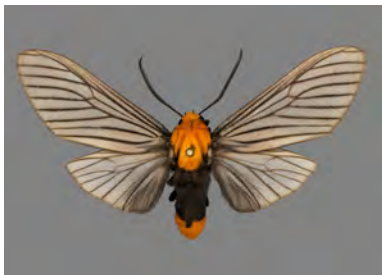
Mera, Pastaza, Ecuador, 1000m;
July 2021



AZ24-0183

Pachydota p. peruviana
Rothschild, 1909 ♀ 59mmVia Nambija, San Carlos De Las
Minas, Zamora-Chinchi, Ecuador,
1700m; August 2023

AZ21-0350

Pseudischnocampa triphylia
(Druce, 1896) ♂ 52mmTena, Napo, Ecuador, 650m; July
2021

AZ22-0554

Pseudischnocampa nervosa
(Felder, 1874) ♂ 52mmMera, Pastaza, Ecuador, 1100m;
August 2022

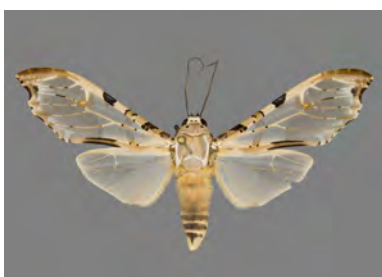
AZ22-0555

Pseudischnocampa nervosa
(Felder, 1874) ♀ 56mmMera, Pastaza, Ecuador, 1100m;
August 2022

AZ21-0107

Munona iridescens *Schaus,*
1894 ♂ 57mmMera, Pastaza, Ecuador, 1000m;
July 2021

AZ22-0534

Psychopasma erosa
(Herrich-Schäffer, [1858])
♀ 47mmMera, Pastaza, Ecuador, 1100m;
August 2022

AZ24-0177

Leucanopsis cf. pseudomanda
(Rothschild, 1910) ♂ 46mmCab. Yankuam, Rio Nangaritzza,
Zamora-Chinchipec, Ecuador, 1000m;
August 2023

AZ22-0524

Leucanopsis cf. boliviana
(Dognin, 1922) ♂ 46mmMera, Pastaza, Ecuador, 1100m;
August 2022

AZ24-0227

Leucanopsis boliviana (Dognin,
1922) ♂ 46mmVia Nambija, San Carlos De Las
Minas, Zamora-Chinchipec, Ecuador,
1700m; August 2023

AZ24-0198

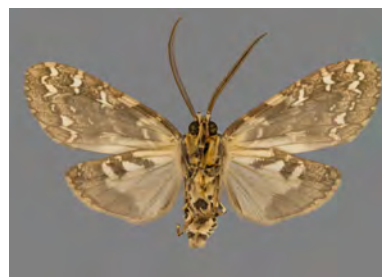
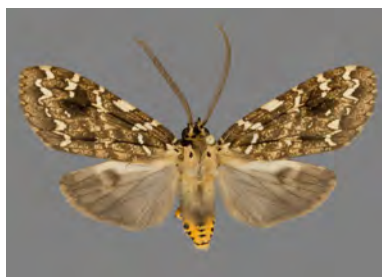
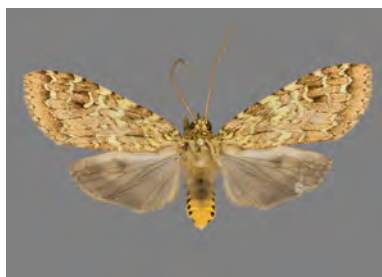
Leucanopsis cf. similis
(Rothschild, 1909) ♂ 38mmNamakuntza, Rio Nambija,
Zamora-Chinchipec, Ecuador, 1100m;
August 2023

AZ24-0190

Leucanopsis cf. marimba
(Schaus, 1933) ♂ 44mmVia Nambija, San Carlos De Las
Minas, Zamora-Chinchipec, Ecuador,
1700m; August 2023

AZ24-0187

Leucanopsis ?spec. ♂ 32mmNamakuntza, Rio Nambija,
Zamora-Chinchipec, Ecuador, 1100m;
August 2023

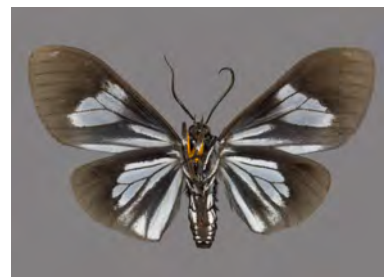
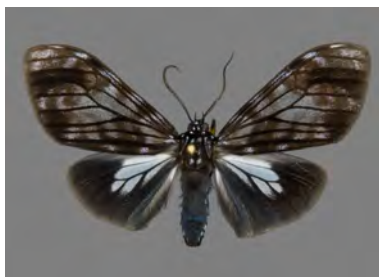
AZ24-0191*Pelochyta pallida* (Schaus,
1901) ♂ 45mmRd. to R. Chumberiaza, Zurmi,
Zamora-Chinchipe, Ecuador, 1600m;
August 2023**AZ24-0194***Pelochyta cf. cinerea* (Walker,
1855) ♀ 46mmNamakuntza, Rio Nambija,
Zamora-Chinchipe, Ecuador, 1100m;
August 2023**AZ21-0337***Pelochyta cf. misera* Schaus,
1911 ♂ 47mmChuchuvi, Esmeraldas, Ecuador,
1000m; July 2021**AZ24-0188***Phaegoptera cf. hampsoni*
(Rothschild, 1909) ♂ 37mmCab. Yankuam, Rio Nangaritzza,
Zamora-Chinchipe, Ecuador, 1000m;
August 2023**AZ24-0199***Phaegoptera cf. hampsoni*
(Rothschild, 1909) ♀ 47mmRd. to R. Chumberiaza, Zurmi,
Zamora-Chinchipe, Ecuador, 1600m;
August 2023**AZ24-0034***Pseudopharus cf. cornelia*
(Druce, 1906) ♂ 36mmVia Nambija, San Carlos De Las
Minas, Zamora-Chinchipe, Ecuador,
1700m; August 2023

AZ24-0053

Aemilia fanum (Druce, 1900)

♂ 43mm

Cab. Yankuam, Rio Nangaritzza,
Zamora-Chinchiipe, Ecuador, 1000m;
August 2023



AZ24-0026

Aemilia mincosa (Druce, 1906)

♂ 41mm

Via Nambija, San Carlos De Las
Minas, Zamora-Chinchiipe, Ecuador,
1700m; August 2023



Subtribe *Pericopina* Walker, 1869

AZ21-0542

Hypocrita aletta (Stoll, [1782])

♀ 63mm

Chuchuvi, Esmeraldas, Ecuador,
1000m; July 2021

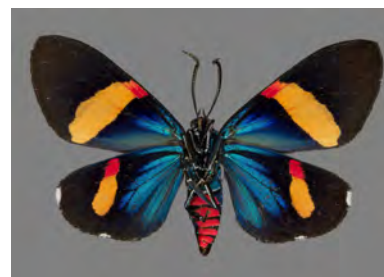


AZ22-0506

Hypocrita arcaeii (Druce, 1884)

♂ 48mm

Chuchuvi, Esmeraldas, Ecuador,
1000m; August 2022



AZ21-0370

Hypocrita c. chilton (Druce,
1885) ♂ 46mm

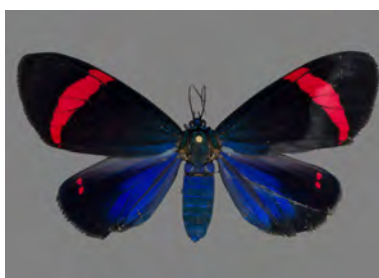
Tena, Napo, Ecuador, 650m; July
2021



AZ24-0207

Hypocrita cf. hystaspes (Butler,
1871) ♀ 62mm

Via Nambija, San Carlos De Las
Minas, Zamora-Chinchiipe, Ecuador,
1700m; August 2023



AZ21-0541

Hypocrita phanoptoides (Zerny, 1928) ♂ 57mm

Chuchuvi, Esmeraldas, Ecuador, 1000m; July 2021



AZ24-0208

Hypocrita rhaetia (Druce, 1895) ♂ 56mm

Via Nambija, San Carlos De Las Minas, Zamora-Chinchipec, Ecuador, 1700m; August 2023



AZ24-0206

Hypocrita temperata (Walker, 1856) ♀ 61mm

Rd. to R. Chumberiaza, Zurmi, Zamora-Chinchipec, Ecuador, 1600m; August 2023



AZ24-0211

Calodesma collaris (Drury, 1782) ♂ 36mm

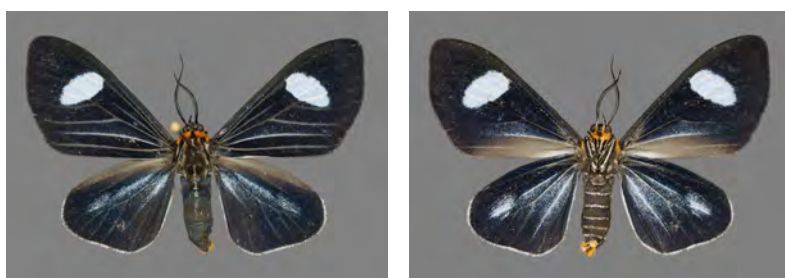
Cab. Yankuam, Rio Nangaritzza, Zamora-Chinchipec, Ecuador, 1000m; August 2023



AZ22-0297

Calodesma cf. dioptis (Felder & Rogenhofer, 1874) ♂ 35mm

P-to Misahualli, Napo, Ecuador, 550m; August 2022



AZ24-0212

Calodesma dioptis (Felder & Rogenhofer, 1874) ♂ 37mm

Cab. Yankuam, Rio Nangaritzza, Zamora-Chinchipec, Ecuador, 1000m; August 2023



AZ22-0488

Calodesma maculifrons
(Walker, [1865]) ♂ 38mm

Chuchuvi, Esmeraldas, Ecuador,
1000m; August 2022



AZ22-0556

Chetone phyleis (Druce, 1885)
♂ 69mm

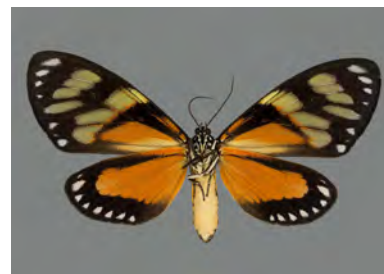
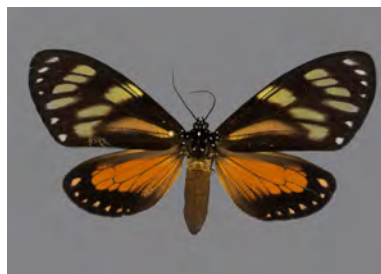
Mera, Pastaza, Ecuador, 1100m;
August 2022



AZ21-0314

Chetone kenara (Butler, 1871)
♂ 70mm

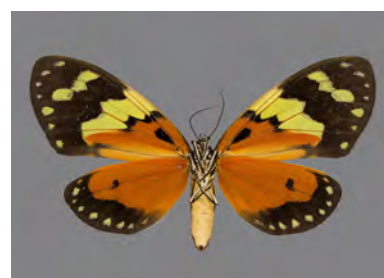
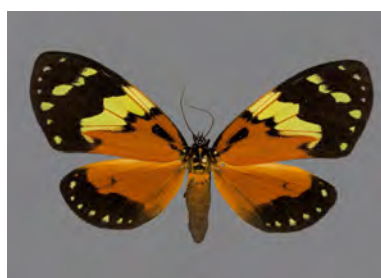
Chuchuvi, Esmeraldas, Ecuador,
1000m; July 2021



AZ21-0312

Chetone suprema (Hering,
1925) ♀ 75mm

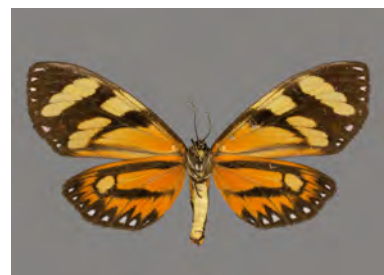
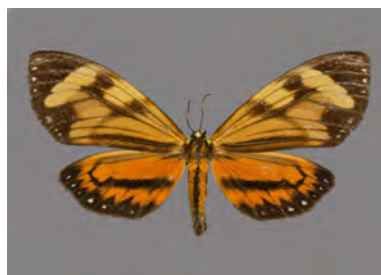
Tena, Napo, Ecuador, 650m; July
2021



AZ21-0320

Dysschema bivittata (Walker,
1854) ♀ 67mm

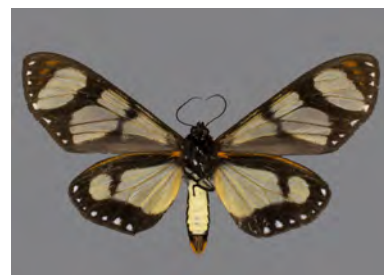
Chuchuvi, Esmeraldas, Ecuador,
1000m; July 2021



AZ21-0318

Dysschema damon (Druce,
1910) ♂ 64mm

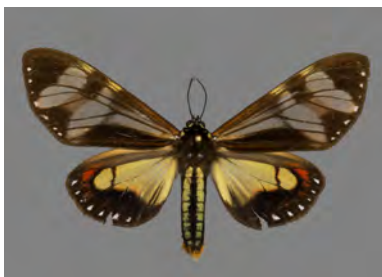
Tena, Napo, Ecuador, 650m; July
2021



AZ21-0111

Dysschema cf. eurocilia
(Cramer, [1777]) ♂ 61mm

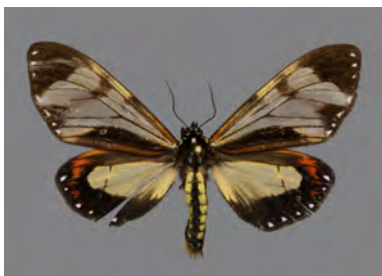
Mera, Pastaza, Ecuador, 1000m;
July 2021



AZ21-0313

Dysschema cf. eurocilia
(Cramer, [1777]) ♂ 61mm

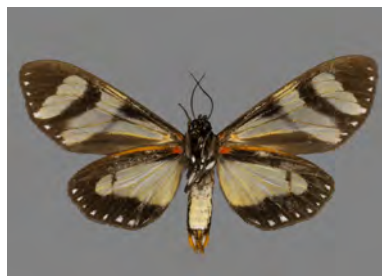
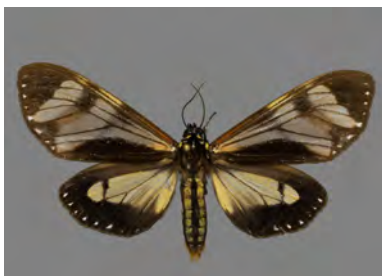
Tena, Napo, Ecuador, 650m; July
2021



AZ21-0319

Dysschema cf. eurocilia
(Cramer, [1777]) ♂ 58mm

Tena, Napo, Ecuador, 650m; July
2021



AZ24-0205

Dysschema cf. imitata (Druce,
1910) ♂ 62mm

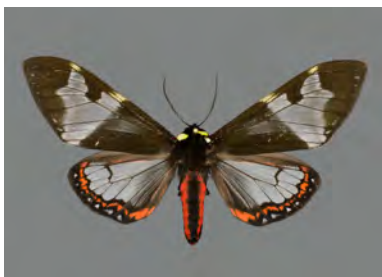
Via Nambija, San Carlos De Las
Minas, Zamora-Chinchipec, Ecuador,
1700m; August 2023



AZ21-0062

Dysschema marginalis (Walker,
1855) ♂ 86mm

Mera, Pastaza, Ecuador, 1000m;
July 2021



AZ21-0315

Dysschema marginalis (Walker,
1855) ♂ 70mm

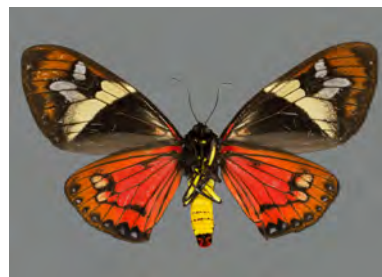
Chuchivi, Esmeraldas, Ecuador,
1000m; July 2021



AZ21-0326

Dysschema marginalis (Walker, 1855) ♀ 94mm

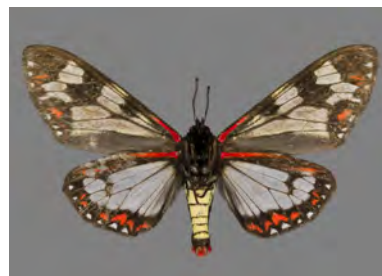
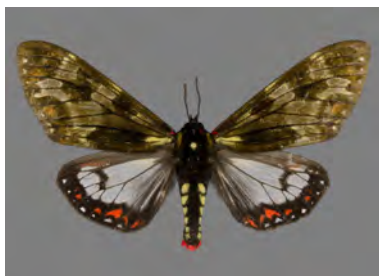
Tena, Napo, Ecuador, 650m; July 2021



AZ24-0201

Dysschema palmeri (Druce, 1910) ♂ 68mm

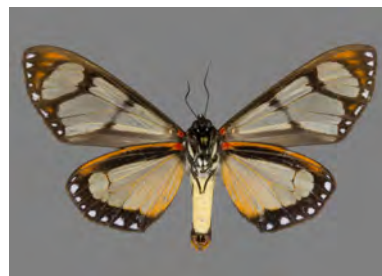
Namakuntza, Rio Nambija, Zamora-Chinchiipe, Ecuador, 1100m; August 2023



AZ24-0202

Dysschema semirufa (Druce, 1910) ♂ 62mm

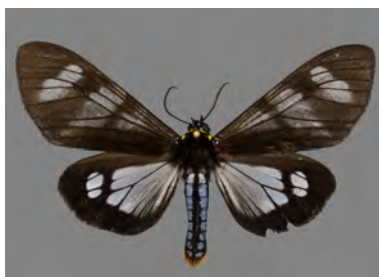
Via Nambija, San Carlos De Las Minas, Zamora-Chinchiipe, Ecuador, 1700m; August 2023



AZ21-0317

Dysschema tricolora (Sulzer, 1776) ♂ 64mm

Tena, Napo, Ecuador, 650m; July 2021



AZ24-0203

Dysschema tricolora (Sulzer, 1776) ♂ 58mm

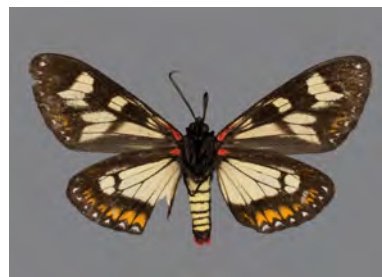
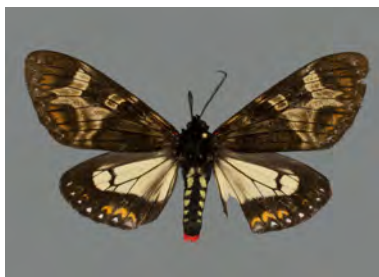
Namakuntza, Rio Nambija, Zamora-Chinchiipe, Ecuador, 1100m; August 2023



AZ21-0316

Dysschema viuda (Schaus, 1910) ♂ 71mm

Chuchuvi, Esmeraldas, Ecuador, 1000m; July 2021



AZ22-0513

Dysschema viuda (Schaus,
1910) ♀ 87mm

Chuchuvi, Esmeraldas, Ecuador,
1000m; August 2022



AZ24-0204

Dysschema ?spec. ♂ 60mm

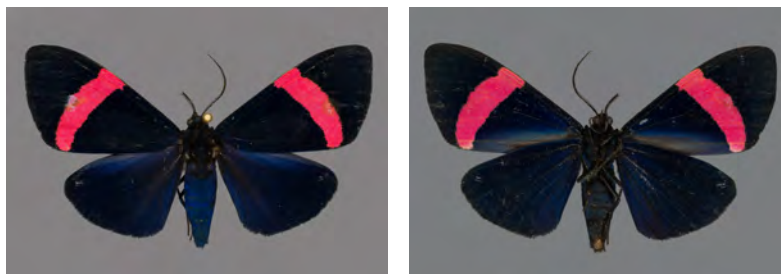
Rd. to R. Chumberiaza, Zurmi,
Zamora-Chinchiipe, Ecuador, 1600m;
August 2023



AZ21-0328

Thyrgis p. phlegon (Druce,
1885) ♂ 51mm

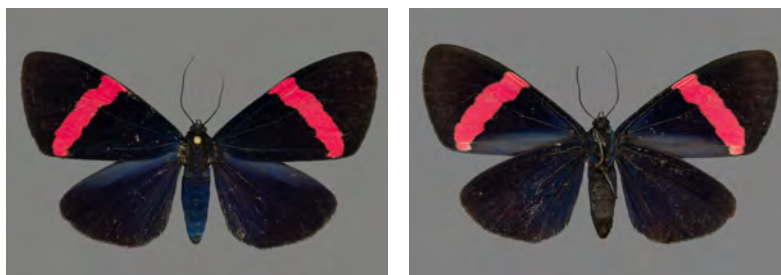
Tena, Napo, Ecuador, 650m; July
2021



AZ24-0209

Thyrgis p. phlegon (Druce,
1885) ♀ 53mm

Via Nambija, San Carlos De Las
Minas, Zamora-Chinchiipe, Ecuador,
1700m; August 2023



AZ24-0210

Thyrgis p. phlegon (Druce,
1885) ♂ 46mm

Cab. Yankuam, Rio Nangaritza,
Zamora-Chinchiipe, Ecuador, 1000m;
August 2023



AZ22-0473

Xenosoma cf. flavisedes
Dognin, 1891 ♂ 42mm

Mera, Pastaza, Ecuador, 1100m;
August 2022



Subtribe *Spilosomina* Kirby, 1892

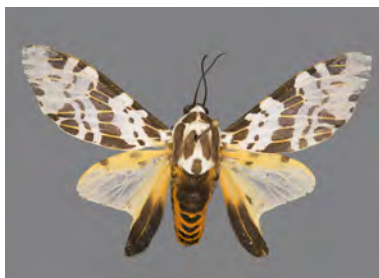
AZ21-0126

Virbia elisca Dyar, 1913 ♀ 40mmMera, Pastaza, Ecuador, 1000m;
July 2021

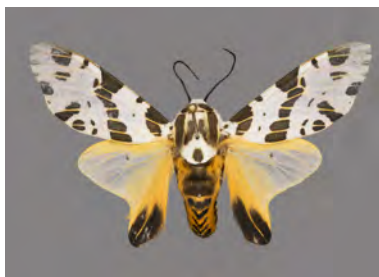
AZ22-0568

Virbia ?spec. ♂ 28mmMera, Pastaza, Ecuador, 1100m;
August 2022

AZ21-0382

Hypercompe cf. magdalenae
(Oberthür, 1881) ♂ 42mmChuchuvi, Esmeraldas, Ecuador,
1000m; July 2021

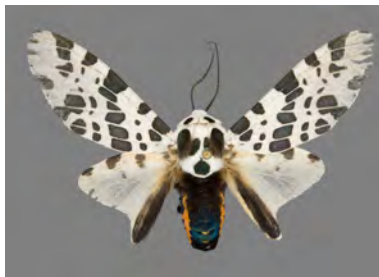
AZ22-0420

Hypercompe cf. magdalenae
(Oberthür, 1881) ♂ 40mmChuchuvi, Esmeraldas, Ecuador,
1000m; August 2022

AZ24-0106

Hypercompe cf. leucarctioides
(Grote & Robinson, 1867)

♂ 44mm

Rd. to R. Chumberiaza, Zurmi,
Zamora-Chinchiipe, Ecuador, 1600m;
August 2023

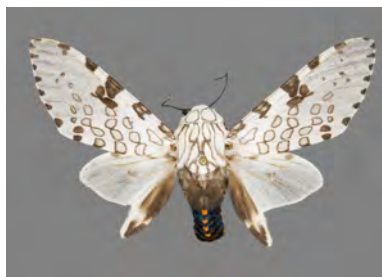
AZ24-0107

Hypercompe robusta (Dognin,
1891) ♂ 60mmVia Nambija, San Carlos De Las
Minas, Zamora-Chinchiipe, Ecuador,
1700m; August 2023

AZ24-0109

Hypercompe cunigunda (Stoll,
[1781]) ♂ 49mm

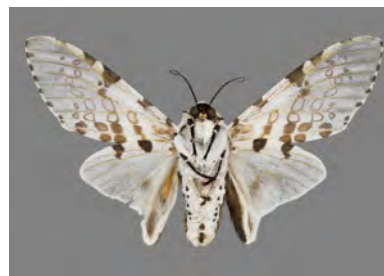
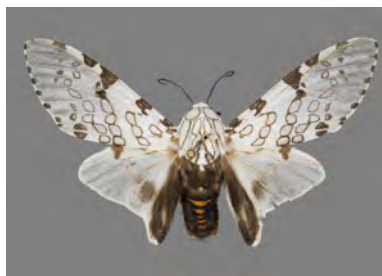
Cab. Yankuam, Rio Nangaritza,
Zamora-Chinchipe, Ecuador, 1000m;
August 2023



AZ22-0549

Hypercompe cf. alpha
(Oberthür, 1881) ♂ 47mm

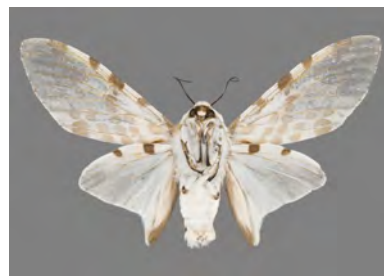
Mera, Pastaza, Ecuador, 1100m;
August 2022



AZ24-0110

Hypercompe cf. alpha
(Oberthür, 1881) ♂ 51mm

Namakuntza, Rio Nambija,
Zamora-Chinchipe, Ecuador, 1100m;
August 2023

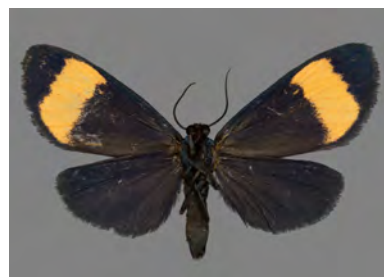
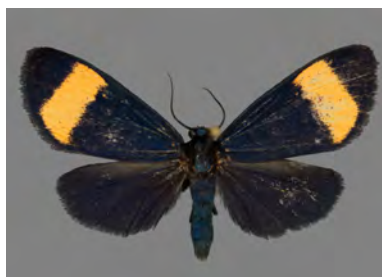


Tribe *Lithosiini* Billberg, 1820

AZ21-0545

Antona caeruleascens (Hampson,
1900) ♂ 30mm

Chuchuvi, Esmeraldas, Ecuador,
1000m; July 2021



AZ24-0102

Antona aff. erythromelas
(Walker, 1854) ♂ 31mm

Cab. Yankuam, Rio Nangaritza,
Zamora-Chinchipe, Ecuador, 1000m;
August 2023



AZ24-0353

Antona mutans (Walker, 1854)
♂ 32mm

Via Nambija, San Carlos De Las
Minas, Zamora-Chinchipe, Ecuador,
1700m; August 2023



AZ24-0354

Antona spec. ♂ 28mm

Via Nambija, San Carlos De Las
Minas, Zamora-Chinchipec, Ecuador,
1700m; August 2023



AZ24-0100

Areva trigemmis (Hübner,
1824) ♀ 27mm

Cab. Yankuam, Rio Nangaritzza,
Zamora-Chinchipec, Ecuador, 1000m;
August 2023



AZ24-0098

Cloesia parthia (Druce, 1889)
♀ 28mm

Cab. Yankuam, Rio Nangaritzza,
Zamora-Chinchipec, Ecuador, 1000m;
August 2023



AZ24-0101

Cloesia parthia (Druce, 1889)
♂ 35mm

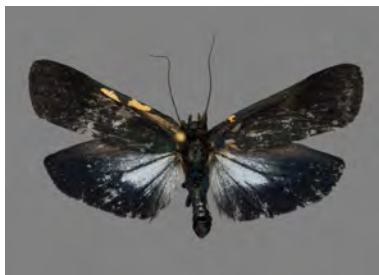
Via Nambija, San Carlos De Las
Minas, Zamora-Chinchipec, Ecuador,
1700m; August 2023



AZ22-0529

Dipaenae ?spec. ♂ 34mm

Mera, Pastaza, Ecuador, 1100m;
August 2022



AZ22-0550

Isorropus cf. celena (Walker,
1854) ♂ 28mm

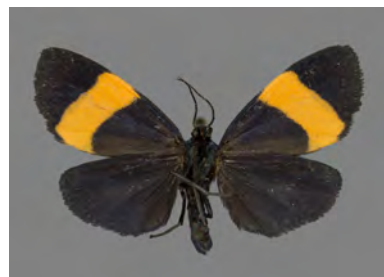
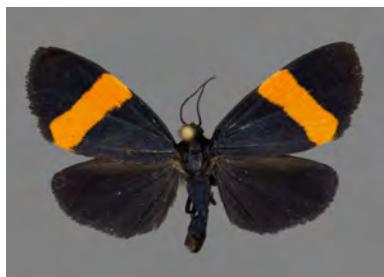
Mera, Pastaza, Ecuador, 1100m;
August 2022



AZ22-0552

Isorropus cf. celena (Walker, 1854) ♂ 28mm

Mera, Pastaza, Ecuador, 1100m;
August 2022



AZ24-0359

Isorropus celena (Walker, 1854) ♀ 39mm

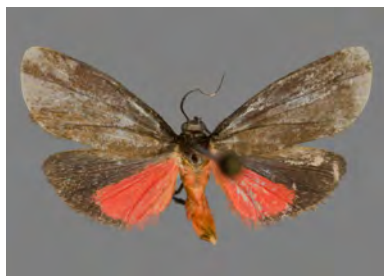
Cab. Yankuam, Rio Nangaritza,
Zamora-Chinchiipe, Ecuador, 1000m;
August 2023



AZ24-0096

Odozana ?spec. ♂ 17mm

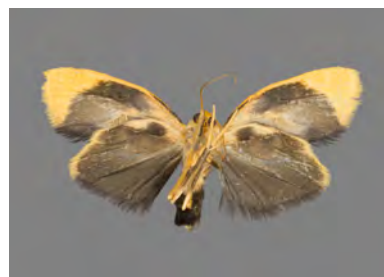
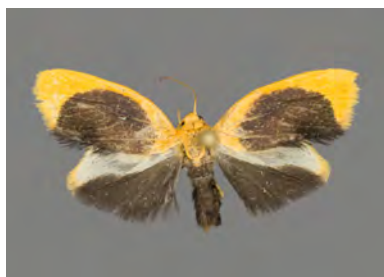
Via Nambija, San Carlos De Las
Minas, Zamora-Chinchiipe, Ecuador,
1700m; August 2023



AZ24-0099

Pronola magniplaga Schaus, 1899 ♀ 18mm

Cab. Yankuam, Rio Nangaritza,
Zamora-Chinchiipe, Ecuador, 1000m;
August 2023

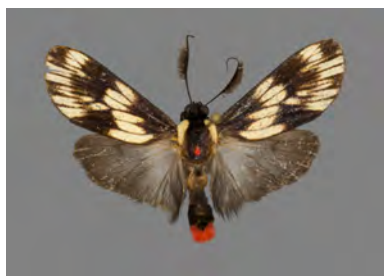


Subtribe *Cisthenina* Bendib & Minet, 1999

AZ21-0341

Ardonea tenebrosa (Walker, [1865]) ♂ 30mm

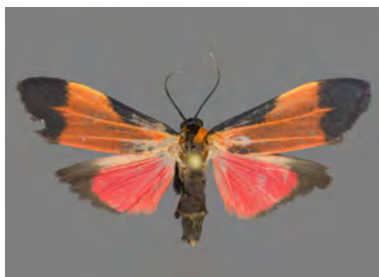
Tena, Napo, Ecuador, 650m; July
2021



AZ24-0097

Lycomorphodes aff. *splendida*
Draudt, 1918 ♂ 26mm

Via Nambija, San Carlos De Las
Minas, Zamora-Chinchiipe, Ecuador,
1700m; August 2023



Subtribe *Lithosiina* Billberg, 1820

AZ21-0109

Agylla cf. *argentifera* (Walker,
1866) ♂ 46mm

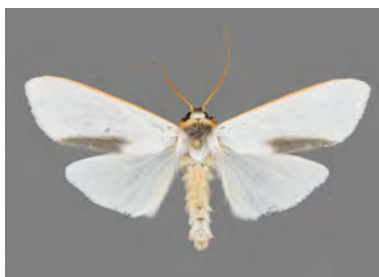
Mera, Pastaza, Ecuador, 1000m;
July 2021



AZ24-0105

Agylla cf. *argentifera* (Walker,
1866) ♂ 44mm

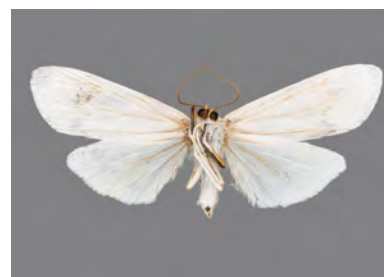
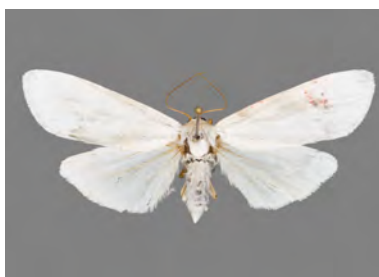
Cab. Yankuam, Rio Nangaritza,
Zamora-Chinchiipe, Ecuador, 1000m;
August 2023



AZ21-0368

Agylla cf. *nivea* (Walker, 1856)
♀ 47mm

Tena, Napo, Ecuador, 650m; July
2021



AZ22-0541

Agylla cf. *nivea* (Walker, 1856)
♀ 45mm

Mera, Pastaza, Ecuador, 1100m;
August 2022



AZ24-0104

Agylla cf. *nivea* (Walker, 1856)
♂ 41mm

Cab. Yankuam, Rio Nangaritza,
Zamora-Chinchiipe, Ecuador, 1000m;
August 2023



Erebidae species incertae

AZ21-0254

(Erebidae) ?spec. ♂ 60mm

Chuchuvi, Esmeraldas, Ecuador,
1000m; July 2021



AZ24-0250

(Erebidae) ?spec. ♀ 33mm

Via Nambija, San Carlos De Las
Minas, Zamora-Chinchiipe, Ecuador,
1700m; August 2023



AZ24-0361

(Erebidae) ?spec. ♂ 28mm

Cab. Yankuam, Rio Nangaritzza,
Zamora-Chinchiipe, Ecuador, 1000m;
August 2023



