

*AZ World Lepidoptera*¹

Euchromiina Pericopina



Date: 15.01.2025

¹Prof. Dr. Andrey Zheludev, Department of Physics, Swiss Federal Institute of Technology Zurich (ETHZ), Otto-Ster-Weg 1, 8093 Zürich, Switzerland; zhelud@ethz.ch; <https://neutron.ethz.ch/>.

Tribe *Arctiini* Leach, 1815

Subtribe *Euchromiina* Butler, 1876

AZ22-0533

Pseudopompilia mimica Druce,
1898 ♂ 44mm

Mera, Pastaza, Ecuador, 1100m;
August 2022



AZ24-0039

Methysia aenetus (Schaus,
1896) ♂ 31mm

Via Nambija, San Carlos De Las
Minas, Zamora-Chinchipe, Ecuador,
1700m; August 2023



AZ22-0501

Autochloris cf. *collocata*
(Walker, 1864) ♂ 34mm

Mera, Pastaza, Ecuador, 1100m;
August 2022



AZ22-0569

Autochloris aff. *cuma* (Druce,
1897) ♂ 44mm

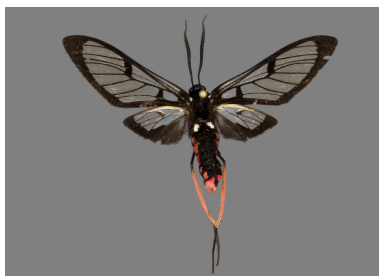
Mera, Pastaza, Ecuador, 1100m;
August 2022



AZ24-0095

Autochloris cuma (Druce, 1897)
♂ 46mm

Rd. to R. Chumberiaza, Zurmi,
Zamora-Chinchipe, Ecuador, 1600m;
August 2023



AZ21-0347

Autochloris aff. *flavipes* Draudt,
1915 ♂ 43mm

Tena, Napo, Ecuador, 650m; July
2021



AZ21-0342

Leucopleura viridis Gaede, 1926
♂ 30mm

Tena, Napo, Ecuador, 650m; July
2021



AZ23-0273

Phaio quadriguttata Dognin,
1909 ♂ 46mm

Rio Blanco, Banos, Tungurahua,
Ecuador, 1950m; August 2023



AZ24-0057

Phaio cephalena (Druce, 1883)
♂ 41mm

Via Nambija, San Carlos De Las
Minas, Zamora-Chinchipe, Ecuador,
1700m; August 2023



AZ24-0058

Phaio acquiguttata Dognin,
1909 ♀ 43mm

Rd. to R. Chumberiaza, Zurmi,
Zamora-Chinchipe, Ecuador, 1600m;
August 2023



AZ24-0059

Phaio acquiguttata Dognin,
1909 ♂ 38mm

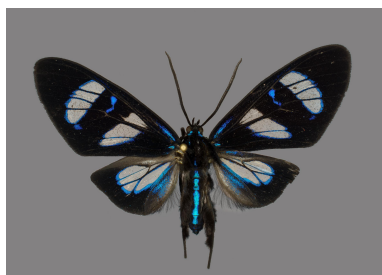
Via Nambija, San Carlos De Las
Minas, Zamora-Chinchipe, Ecuador,
1700m; August 2023



AZ16-0166

Agyrtidia uranophila (Walker,
1866) ♂ 56mm

Rio Itaya, Maynas, Loreto, Peru;
March 2016



AZ21-0591

Calonotos cf. aurata (Walker, 1854) ♂ 40mm

Chuchuvi, Esmeraldas, Ecuador, 1000m; July 2021



AZ24-0056

Calonotos chalcipleura Hampson, 1898 ♂ 41mm

Namakuntza, Rio Nambija, Zamora-Chinchipec, Ecuador, 1100m; August 2023



AZ20-0237

Calonotos longipennis Rothschild, 1911 ♂ 41mm

Camp Caimans, Route D6, French Guiana, France; November 2020



AZ21-0344

Calonotos triplaga Hampson, 1909 ♂ 35mm

Tena, Napo, Ecuador, 650m; July 2021



AZ22-0514

Sarosa acutior (Felder, 1874) ♂ 29mm

Mera, Pastaza, Ecuador, 1100m; August 2022



AZ21-0538

Sarosa notata (Butler, 1876) ♂ 37mm

Chuchuvi, Esmeraldas, Ecuador, 1000m; July 2021



AZ21-0540

Sarosa notata (Butler, 1876)
♂ 37mm

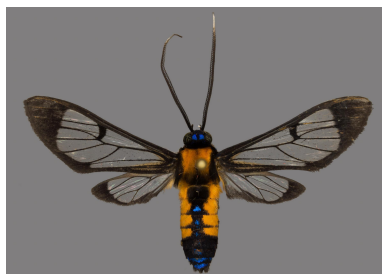
Chuchuvi, Esmeraldas, Ecuador,
1000m; July 2021



AZ22-0358

Sarosa notata (Butler, 1876)
♂ 34mm

Chuchuvi, Esmeraldas, Ecuador,
1000m; August 2022



AZ24-0089

Sarosa xanthobasis Druce, 1898
♂ 45mm

Rd. to R. Chumberiaza, Zurmi,
Zamora-Chinchiipe, Ecuador, 1600m;
August 2023



AZ24-0092

Sarosa cf. xanthobasis Druce,
1898 ♂ 44mm

Rd. to R. Chumberiaza, Zurmi,
Zamora-Chinchiipe, Ecuador, 1600m;
August 2023



AZ21-0117

Histioea proserpina (Hübner,
1823) ♂ 55mm

Mera, Pastaza, Ecuador, 1000m;
July 2021



AZ24-0066

Histioea proserpina (Hübner,
1823) ♂ 50mm

Rd. to R. Chumberiaza, Zurmi,
Zamora-Chinchiipe, Ecuador, 1600m;
August 2023



AZ24-0042

Aclytia hoffmannsi Rothschild,
1912 ♀ 35mm

Cab. Yankuam, Rio Nangaritzza,
Zamora-Chinchiipe, Ecuador, 1000m;
August 2023



AZ24-0043

Aclytia hoffmannsi Rothschild,
1912 ♂ 30mm

Cab. Yankuam, Rio Nangaritzza,
Zamora-Chinchiipe, Ecuador, 1000m;
August 2023



AZ24-0087

Chrostosoma haematica (Perty,
1834) ♂ 24mm

Cab. Yankuam, Rio Nangaritzza,
Zamora-Chinchiipe, Ecuador, 1000m;
August 2023



AZ24-0088

Chrostosoma cf. haematica
(Perty, 1834) ♂ 25mm

Namakuntza, Rio Nambija,
Zamora-Chinchiipe, Ecuador, 1100m;
August 2023



AZ24-0064

Chrysolepis gigas Rothschild,
1911 ♂ 57mm

Rd. to R. Chumberiaza, Zurmi,
Zamora-Chinchiipe, Ecuador, 1600m;
August 2023



AZ24-0065

Chrysolepis gigas Rothschild,
1911 ♂ 54mm

Rd. to R. Chumberiaza, Zurmi,
Zamora-Chinchiipe, Ecuador, 1600m;
August 2023



AZ21-0550

Dinia mena (Hübner, [1827])
♂ 28mm

Chuchuvi, Esmeraldas, Ecuador,
1000m; July 2021



AZ24-0049

Dycladia c. cf. correbioides
Felder, 1874 ♂ 28mm

Cab. Yankuam, Rio Nangaritza,
Zamora-Chinchipe, Ecuador, 1000m;
August 2023



AZ15-0074

Euchromia creusa (Linnaeus,
1758) ♂ 46mm

Weda Bay, Halmahera, North
Maluku, Indonesia; December 2014



AZ19-0160

Euchromia creusa (Linnaeus,
1758) ♀ 49mm

Pulau Lembeh, North Sulawesi,
Indonesia; July 2019



AZ22-0024

Euchromia creusa (Linnaeus,
1758) ♂ 42mm

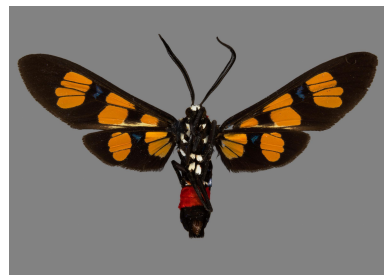
Sali Kecil (Halmahera Selatan),
North Maluku, Indonesia; July 2022



AZ12-0280

Euchromia polymena (Linnaeus,
1758) ♂ 42mm

Mumbai, Maharashtra, India;
January 2008



AZ19-0110

Euchromia polymena (Linnaeus, 1758) ♂ 40mm

Singhtauk Beach, Dawei,
Tanintharyi Region, Burma;
December 2018



AZ24-0094

Gymnelia carabayana
(Rothschild, 1911) ♂ 30mm

Rd. to R. Chumberiaza, Zurmi,
Zamora-Chinchiipe, Ecuador, 1600m;
August 2023



AZ22-0415

Gymnelia salvini (Butler, 1876)
♂ 35mm

Chuchuvi, Esmeraldas, Ecuador,
1000m; August 2022



AZ22-0417

Gymnelia salvini (Butler, 1876)
♂ 39mm

Chuchuvi, Esmeraldas, Ecuador,
1000m; August 2022



AZ24-0044

Holophaea eurytorna Hampson,
1914 ♂ 30mm

Rd. to R. Chumberiaza, Zurmi,
Zamora-Chinchiipe, Ecuador, 1600m;
August 2023



AZ24-0090

Homoeocera trizona Dognin,
1906 ♂ 41mm

Rd. to R. Chumberiaza, Zurmi,
Zamora-Chinchiipe, Ecuador, 1600m;
August 2023



AZ24-0091

Homoeocera trizona Dognin,
1906 ♂ 42mm

Rd. to R. Chumberiaza, Zurmi,
Zamora-Chinchiipe, Ecuador, 1600m;
August 2023



AZ21-0356

Isanthrene basifera Walker,
[1865] ♂ 37mm

Chuchuvi, Esmeraldas, Ecuador,
1000m; July 2021



AZ21-0357

Isanthrene basifera Walker,
[1865] ♂ 35mm

Chuchuvi, Esmeraldas, Ecuador,
1000m; July 2021



AZ16-0160

Leucotmemis torrida (Walker,
1854) ♀ 29mm

Rio Itaya, Maynas, Loreto, Peru;
March 2016



AZ24-0067

Macrocneme aff. adonis Druce,
1884 ♀ 44mm

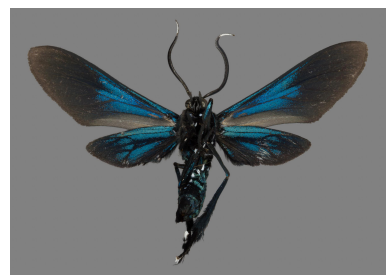
Rd. to R. Chumberiaza, Zurmi,
Zamora-Chinchiipe, Ecuador, 1600m;
August 2023



AZ24-0068

Macrocneme aff. adonis Druce,
1884 ♂ 40mm

Via Nambija, San Carlos De Las
Minas, Zamora-Chinchiipe, Ecuador,
1700m; August 2023



AZ21-0366

Macrocneme caeruleascens
Dognin, 1906 ♂ 32mm

Tena, Napo, Ecuador, 650m; July
2021



AZ22-0537

Macrocneme caeruleascens
Dognin, 1906 ♂ 33mm

Mera, Pastaza, Ecuador, 1100m;
August 2022



AZ24-0060

Macrocneme cf. caeruleascens
Dognin, 1906 ♂ 34mm

Namakuntza, Rio Nambija,
Zamora-Chinchipec, Ecuador, 1100m;
August 2023



AZ12-0261

Macrocneme immanis
Hampson, 1898 ♀ 45mm

Sorata, La Paz, Bolivia, 3200m;
May 2003



AZ24-0061

Macrocneme cf. leucostigma
(Perty, 1834) ♂ 36mm

Cab. Yankuam, Rio Nangaritzza,
Zamora-Chinchipec, Ecuador, 1000m;
August 2023



AZ24-0062

Macrocneme cf. leucostigma
(Perty, 1834) ♀ 38mm

Cab. Yankuam, Rio Nangaritzza,
Zamora-Chinchipec, Ecuador, 1000m;
August 2023



AZ24-0069

Macrocneme leucostigma
(Perty, 1834) ♂ 36mm

Namakuntza, Rio Nambija,
Zamora-Chinchipe, Ecuador, 1100m;
August 2023



AZ22-0543

Macrocneme cf. semiviridis
Druce, 1911 ♀ 37mm

Mera, Pastaza, Ecuador, 1100m;
August 2022



AZ22-0547

Macrocneme cf. semiviridis
Druce, 1911 ♂ 35mm

Mera, Pastaza, Ecuador, 1100m;
August 2022



AZ24-0040

Macrocneme viridis (Druce,
1883) ♂ 35mm

Rd. to R. Chumberiaza, Zurmi,
Zamora-Chinchipe, Ecuador, 1600m;
August 2023



AZ21-0532

Mesothen attali Jean-Aimé
Cerde 2017 ♀ 30mm

Chuchuvi, Esmeraldas, Ecuador,
1000m; July 2021



AZ22-0493

Mesothen bisexualis Dognin,
1912 ♂ 31mm

Mera, Pastaza, Ecuador, 1100m;
August 2022



AZ24-0072

Mesothen bisexualis Dognin,
1912 ♀ 35mm

Rd. to R. Chumberiaza, Zurmi,
Zamora-Chinchiipe, Ecuador, 1600m;
August 2023



AZ22-0456

Mesothen flavicostata Druce,
1906 ♂ 29mm

Mera, Pastaza, Ecuador, 1100m;
August 2022



AZ24-0070

Mesothen ignea Druce, 1898
♂ 36mm

Via Nambija, San Carlos De Las
Minas, Zamora-Chinchiipe, Ecuador,
1700m; August 2023



AZ24-0071

Mesothen ignea Druce, 1898
♀ 38mm

Rd. to R. Chumberiaza, Zurmi,
Zamora-Chinchiipe, Ecuador, 1600m;
August 2023



AZ22-0520

Mesothen roseifemur Draudt,
1915 ♂ 29mm

Mera, Pastaza, Ecuador, 1100m;
August 2022



AZ24-0080

Mesothen roseifemur Draudt,
1915 ♀ 34mm

Via Nambija, San Carlos De Las
Minas, Zamora-Chinchiipe, Ecuador,
1700m; August 2023



AZ22-0375

Mesotheren ?spec. ♂ 22mm

Chuchuvi, Esmeraldas, Ecuador,
1000m; August 2022



AZ21-0535

Pheia elegans (Druce, 1884)

♀ 27mm

Chuchuvi, Esmeraldas, Ecuador,
1000m; July 2021



AZ24-0077

Phoenicoprocta aff. sanguinea
(Walker, 1854) ♂ 23mm

Cab. Yankuam, Rio Nangaritza,
Zamora-Chinchipe, Ecuador, 1000m;
August 2023



AZ24-0078

Phoenicoprocta aff. sanguinea
(Walker, 1854) ♂ 23mm

Cab. Yankuam, Rio Nangaritza,
Zamora-Chinchipe, Ecuador, 1000m;
August 2023



AZ24-0081

Phoenicoprocta vacillans
(Walker, 1856) ♂ 30mm

Cab. Yankuam, Rio Nangaritza,
Zamora-Chinchipe, Ecuador, 1000m;
August 2023



AZ24-0082

Phoenicoprocta vacillans
(Walker, 1856) ♂ 30mm

Cab. Yankuam, Rio Nangaritza,
Zamora-Chinchipe, Ecuador, 1000m;
August 2023



AZ24-0085

Phoenicoprocta vacillans
(Walker, 1856) ♂ 32mm

Cab. Yankuam, Rio Nangaritzza,
Zamora-Chinchiipe, Ecuador, 1000m;
August 2023



AZ21-0345

Poliopastea cf. anthracina
(Klages, 1906) ♂ 40mm

Tena, Napo, Ecuador, 650m; July
2021



AZ24-0063

Poliopastea anthracina (Klages,
1906) ♂ 39mm

Cab. Yankuam, Rio Nangaritzza,
Zamora-Chinchiipe, Ecuador, 1000m;
August 2023



AZ21-0364

Poliopastea indistincta (Butler,
1876) ♀ 32mm

Chuchuvi, Esmeraldas, Ecuador,
1000m; July 2021



AZ22-0432

Pseudosphex ichneumonea
Herrich-Schäffer, [1854]
♂ 35mm

Chuchuvi, Esmeraldas, Ecuador,
1000m; August 2022



AZ22-0544

Rhynchopyga elongata (Dognin,
1890) ♀ 35mm

Mera, Pastaza, Ecuador, 1100m;
August 2022



AZ21-0023

Planuncus cf. absona (Draudt,
1915) ♀ 32mm

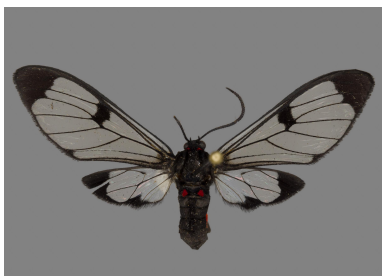
Mera, Pastaza, Ecuador, 1000m;
July 2021



AZ22-0487

Planuncus cf. absona (Draudt,
1915) ♀ 32mm

Mera, Pastaza, Ecuador, 1100m;
August 2022



AZ24-0083

Planuncus cf. absona (Draudt,
1915) ♂ 28mm

Namakuntza, Rio Nambija,
Zamora-Chinchiipe, Ecuador, 1100m;
August 2023



AZ21-0354

Saurita aff. arimensis Fleming,
1957 ♂ 22mm

Tena, Napo, Ecuador, 650m; July
2021



AZ22-0558

Saurita aff. arimensis Fleming,
1957 ♂ 24mm

Mera, Pastaza, Ecuador, 1100m;
August 2022



AZ21-0017

Saurita cassandra (Linnaeus,
1758) ♀ 34mm

Mera, Pastaza, Ecuador, 1000m;
July 2021



AZ21-0365

Saurita aff. cassandra
(*Linnaeus, 1758*) ♀ 28mm

Chuchuvi, Esmeraldas, Ecuador,
1000m; July 2021



AZ24-0038

Saurita diffusa Schaus, 1911
♂ 26mm

Rd. to R. Chumberiaza, Zurmi,
Zamora-Chinchiipe, Ecuador, 1600m;
August 2023



AZ21-0035

Saurita cf. hilda (Druce, 1906)
♂ 24mm

Mera, Pastaza, Ecuador, 1000m;
July 2021



AZ21-0349

Saurita vindonissa (Druce,
1883) ♂ 28mm

Tena, Napo, Ecuador, 650m; July
2021



AZ24-0093

Poecilosoma chrysis Hübner,
1823 ♂ 34mm

Cab. Yankuam, Rio Nangaritza,
Zamora-Chinchiipe, Ecuador, 1000m;
August 2023



AZ21-0533

Cosmosoma xanthosticta
Hampson, 1898 ♀ 32mm

Chuchuvi, Esmeraldas, Ecuador,
1000m; July 2021



AZ22-0424

Cosmosoma xanthosticta
Hampson, 1898 ♂ 30mm

Chuchuvi, Esmeraldas, Ecuador,
1000m; August 2022



AZ22-0359

Cosmosoma angustimargo
Schaus, 1911 ♂ 32mm

Chuchuvi, Esmeraldas, Ecuador,
1000m; August 2022



AZ22-0539

Cosmosoma angustimargo
Schaus, 1911 ♀ 35mm

Mera, Pastaza, Ecuador, 1100m;
August 2022



AZ24-0073

Cosmosoma angustimargo
Schaus, 1911 ♂ 34mm

Cab. Yankuam, Rio Nangaritza,
Zamora-Chinchiipe, Ecuador, 1000m;
August 2023



AZ22-0400

Cosmosoma aff. apennina
Druce, 1905 ♂ 24mm

Chuchuvi, Esmeraldas, Ecuador,
1000m; August 2022



AZ22-0499

Cosmosoma apennina *Druce,*
1905 ♂ 26mm

Mera, Pastaza, Ecuador, 1100m;
August 2022



AZ22-0562

Cosmosoma apennina Druce,
1905 ♂ 25mm

Mera, Pastaza, Ecuador, 1100m;
August 2022



AZ24-0076

Cosmosoma apennina Druce,
1905 ♂ 24mm

Via Nambija, San Carlos De Las
Minas, Zamora-Chinchiipe, Ecuador,
1700m; August 2023



AZ21-0353

Cosmosoma batesii (Butler,
1876) ♀ 31mm

Tena, Napo, Ecuador, 650m; July
2021



AZ22-0457

Cosmosoma batesii (Butler,
1876) ♂ 29mm

Mera, Pastaza, Ecuador, 1100m;
August 2022



AZ22-0526

Cosmosoma centralis (Walker,
1854) ♂ 30mm

Mera, Pastaza, Ecuador, 1100m;
August 2022



AZ24-0079

Cosmosoma centralis (Walker,
1854) ♂ 29mm

Rd. to R. Chumberiaza, Zurmi,
Zamora-Chinchiipe, Ecuador, 1600m;
August 2023



AZ21-0033

Cosmosoma dorsicineta Dognin,
1912 ♂ 26mm

Mera, Pastaza, Ecuador, 1000m;
July 2021



AZ22-0475

Cosmosoma dorsicineta Dognin,
1912 ♂ 28mm

Mera, Pastaza, Ecuador, 1100m;
August 2022



AZ24-0075

Cosmosoma cf. dorsicineta
Dognin, 1912 ♀ 28mm

Rd. to R. Chumberiaza, Zurmi,
Zamora-Chinchiipe, Ecuador, 1600m;
August 2023



AZ24-0086

Cosmosoma cf. dorsicineta
Dognin, 1912 ♀ 29mm

Via Nambija, San Carlos De Las
Minas, Zamora-Chinchiipe, Ecuador,
1700m; August 2023



AZ21-0358

Cosmosoma entella Druce, 1899
♀ 36mm

Chuchuvi, Esmeraldas, Ecuador,
1000m; July 2021



AZ21-0539

Cosmosoma entella Druce, 1899
♂ 33mm

Chuchuvi, Esmeraldas, Ecuador,
1000m; July 2021



AZ22-0411

Cosmosoma entella Druce, 1899
♂ 32mm

Chuchuvi, Esmeraldas, Ecuador,
1000m; August 2022



AZ22-0406

Cosmosoma galbana Schaus,
1912 ♂ 27mm

Chuchuvi, Esmeraldas, Ecuador,
1000m; August 2022



AZ21-0531

Cosmosoma parambae
Rothschild, 1911 ♂ 38mm

Chuchuvi, Esmeraldas, Ecuador,
1000m; July 2021



AZ21-0360

Cosmosoma aff. stibosticta
(Butler, 1876) ♂ 32mm

Chuchuvi, Esmeraldas, Ecuador,
1000m; July 2021



AZ21-0536

Cosmosoma aff. stibosticta
(Butler, 1876) ♂ 32mm

Chuchuvi, Esmeraldas, Ecuador,
1000m; July 2021



AZ22-0507

Cosmosoma stibosticta (Butler,
1876) ♂ 29mm

Mera, Pastaza, Ecuador, 1100m;
August 2022



AZ24-0084

Cosmosoma subflamma
(Walker, 1854) ♂ 37mm

Namakuntza, Rio Nambija,
Zamora-Chinchipe, Ecuador, 1100m;
August 2023



AZ22-0464

(*Euchromiina*) ?spec. ♂ 27mm

Mera, Pastaza, Ecuador, 1100m;
August 2022



AZ22-0489

(*Euchromiina*) ?spec. ♂ 25mm

Mera, Pastaza, Ecuador, 1100m;
August 2022



AZ22-0571

(*Euchromiina*) ?spec. ♂ 25mm

Mera, Pastaza, Ecuador, 1100m;
August 2022



AZ24-0074

(*Euchromiina*) ?spec. ♀ 30mm

Cab. Yankuam, Rio Nangaritza,
Zamora-Chinchipe, Ecuador, 1000m;
August 2023



Subtribe *Pericopina* Walker, 1869

AZ20-0503

Hypocrita celadon (Cramer,
1777) ♂ 60mm

Camp Caimans, Route D6, French
Guiana, France; November 2020



AZ20-0505

Hypocrita celadon (Cramer,
1777) ♀ 64mm

Camp Caimans, Route D6, French
Guiana, France; November 2020



AZ21-0542

Hypocrita aletta (Stoll, [1782])
♀ 63mm

Chuchuvi, Esmeraldas, Ecuador,
1000m; July 2021



AZ22-0506

Hypocrita arcaeï (Druce, 1884)
♂ 48mm

Chuchuvi, Esmeraldas, Ecuador,
1000m; August 2022



AZ21-0370

Hypocrita c. childon (Druce,
1885) ♂ 46mm

Tena, Napo, Ecuador, 650m; July
2021



AZ24-0207

Hypocrita cf. hystaspes (Butler,
1871) ♀ 62mm

Via Nambija, San Carlos De Las
Minas, Zamora-Chinchiipe, Ecuador,
1700m; August 2023



AZ21-0541

Hypocrita phanoptoides (Zerny, 1928) ♂ 57mm

Chuchuvi, Esmeraldas, Ecuador, 1000m; July 2021



AZ12-0267

Hypocrita plagifera (C. & R. Felder, 1862) ♀ 57mm

R. Madre de Dios, Puerto Maldonado, Madre de Dios, Peru; September 2004



AZ24-0208

Hypocrita rhaetia (Druce, 1895) ♂ 56mm

Via Nambija, San Carlos De Las Minas, Zamora-Chinchipe, Ecuador, 1700m; August 2023



AZ24-0206

Hypocrita temperata (Walker, 1856) ♀ 61mm

Rd. to R. Chumberiaza, Zurmi, Zamora-Chinchipe, Ecuador, 1600m; August 2023



AZ24-0211

Calodesma collaris (Drury, 1782) ♂ 36mm

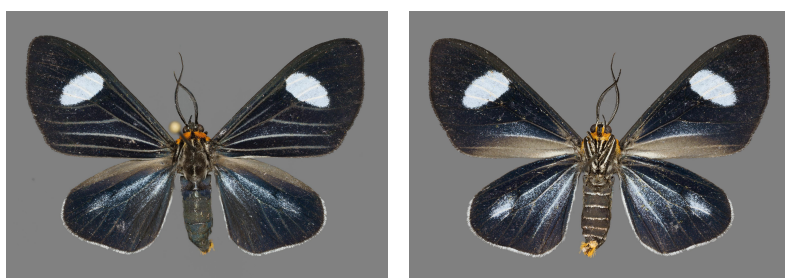
Cab. Yankuam, Rio Nangaritzza, Zamora-Chinchipe, Ecuador, 1000m; August 2023



AZ22-0297

Calodesma cf. dioptis (Felder & Rogenhofer, 1874) ♂ 35mm

P-to Misahualli, Napo, Ecuador, 550m; August 2022



AZ24-0212

Calodesma dioptis (Felder & Rogenhofer, 1874) ♂ 37mm

Cab. Yankuam, Rio Nangaritza, Zamora-Chinchipec, Ecuador, 1000m; August 2023



AZ22-0488

Calodesma maculifrons (Walker, [1865]) ♂ 38mm

Chuchuvi, Esmeraldas, Ecuador, 1000m; August 2022



AZ21-0323

Calodesma maculifrons (Walker, [1865]) ♂ 38mm

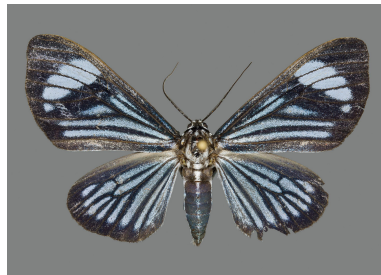
Chuchuvi, Esmeraldas, Ecuador, 1000m; July 2021



AZ20-0217

Calodesma uraneides (Butler, 1871) ♂ 39mm

Camp Caimans, Route D6, French Guiana, France; November 2020



AZ22-0556

Chetone phyleis (Druce, 1885) ♂ 69mm

Mera, Pastaza, Ecuador, 1100m; August 2022



AZ20-0475

Chetone c. catilina (Cramer, [1775]) ♀ 65mm

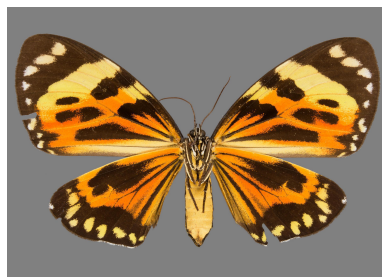
Camp Caimans, Route D6, French Guiana, France; November 2020



AZ13-0157

Chetone h. histrio Boisduval,
1870 ♀ 69mm

Leticia, Amazonas, Colombia, 100m;
April 2013



AZ16-0167

Chetone h. histrio Boisduval,
1870 ♂ 63mm

Rio Itaya, Maynas, Loreto, Peru;
March 2016



AZ16-0170

Chetone h. histrio Boisduval,
1870 ♀ 74mm

Rio Itaya, Maynas, Loreto, Peru;
March 2016



AZ16-0180

Chetone ithrana intersecta
(Hering, 1925) ♂ 71mm

Rio Itaya, Maynas, Loreto, Peru;
March 2016



AZ21-0314

Chetone kenara (Butler, 1871)
♂ 70mm

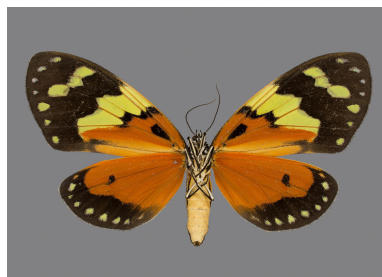
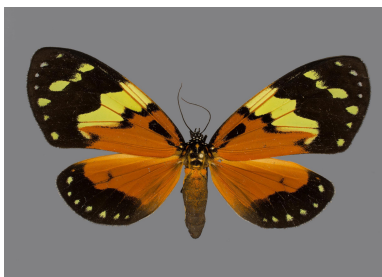
Chuchuvi, Esmeraldas, Ecuador,
1000m; July 2021



AZ21-0312

Chetone suprema (Hering,
1925) ♀ 75mm

Tena, Napo, Ecuador, 650m; July
2021



AZ12-0266

Composia credula (Fabricius,
1775) ♀ 46mm

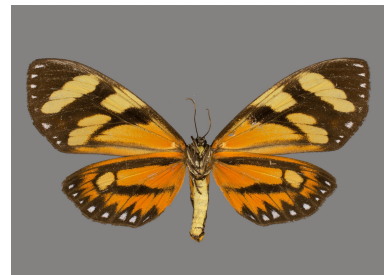
St. John, VI, USA; January 2002



AZ21-0320

Dysschema bivittata (Walker,
1854) ♀ 67mm

Chuchuvi, Esmeraldas, Ecuador,
1000m; July 2021



AZ21-0318

Dysschema damon (Druce,
1910) ♂ 64mm

Tena, Napo, Ecuador, 650m; July
2021



AZ21-0111

Dysschema cf. eurocilia
(Cramer, [1777]) ♂ 61mm

Mera, Pastaza, Ecuador, 1000m;
July 2021



AZ21-0313

Dysschema cf. eurocilia
(Cramer, [1777]) ♂ 61mm

Tena, Napo, Ecuador, 650m; July
2021



AZ21-0319

Dysschema cf. eurocilia
(Cramer, [1777]) ♂ 58mm

Tena, Napo, Ecuador, 650m; July
2021



AZ24-0205

Dysschema cf. imitata (Druce,
1910) ♂ 62mm

Via Nambija, San Carlos De Las
Minas, Zamora-Chinchiipe, Ecuador,
1700m; August 2023



AZ20-0473

Dysschema larvata (Walker,
1856) ♀ 73mm

Camp Caimans, Route D6, French
Guiana, France; November 2020



AZ21-0062

Dysschema marginalis (Walker,
1855) ♂ 86mm

Mera, Pastaza, Ecuador, 1000m;
July 2021



AZ21-0315

Dysschema marginalis (Walker,
1855) ♂ 70mm

Chuchuvi, Esmeraldas, Ecuador,
1000m; July 2021



AZ21-0326

Dysschema marginalis (Walker,
1855) ♀ 94mm

Tena, Napo, Ecuador, 650m; July
2021



AZ24-0201

Dysschema palmeri (Druce,
1910) ♂ 68mm

Namakuntza, Rio Nambija,
Zamora-Chinchiipe, Ecuador, 1100m;
August 2023



AZ24-0202

Dysschema semirufa (Druce,
1910) ♂ 62mm

Via Nambija, San Carlos De Las
Minas, Zamora-Chinchiipe, Ecuador,
1700m; August 2023



AZ21-0317

Dysschema tricolora (Sulzer,
1776) ♂ 64mm

Tena, Napo, Ecuador, 650m; July
2021



AZ24-0203

Dysschema tricolora (Sulzer,
1776) ♂ 58mm

Namakuntza, Rio Nambija,
Zamora-Chinchiipe, Ecuador, 1100m;
August 2023



AZ21-0316

Dysschema viuda (Schaus,
1910) ♂ 71mm

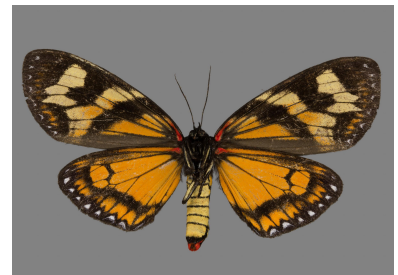
Chuchuvi, Esmeraldas, Ecuador,
1000m; July 2021



AZ22-0513

Dysschema viuda (Schaus,
1910) ♀ 87mm

Chuchuvi, Esmeraldas, Ecuador,
1000m; August 2022



AZ24-0204

Dysschema ?spec. ♂ 60mm

Rd. to R. Chumberiaza, Zurmi,
Zamora-Chinchiipe, Ecuador, 1600m;
August 2023



AZ12-0265

Gnophaela vermiculata (Grote,
[1864]) ♀ 52mm

Santa Fe NF, NM, USA; August
2003



AZ12-0304

Hyalurga leucophaea gabrielis
Bryk, 1953 ♀ 38mm

R. Madre de Dios, Puerto
Maldonado, Madre de Dios, Peru;
September 2004



AZ14-0212

Notophyson tiresias (Cramer,
[1776]) ♀ 72mm

Ubatuba, SP, Brazil; August 2014



AZ21-0328

Thyrgis p. phlegon (Druce,
1885) ♂ 51mm

Tena, Napo, Ecuador, 650m; July
2021



AZ24-0209

Thyrgis p. phlegon (Druce,
1885) ♀ 53mm

Via Nambija, San Carlos De Las
Minas, Zamora-Chinchipe, Ecuador,
1700m; August 2023



AZ24-0210

Thyrgis p. phlegon (Druce,
1885) ♂ 46mm

Cab. Yankuam, Rio Nangaritzza,
Zamora-Chinchipe, Ecuador, 1000m;
August 2023



AZ22-0473

Xenosoma cf. flavisedes
Dognin, 1891 ♂ 42mm

Mera, Pastaza, Ecuador, 1100m;
August 2022



